

# HANECO COMMERCIAL LED DOWNLIGHT INSTALLATION GUIDE

## AURORA<sup>80</sup>



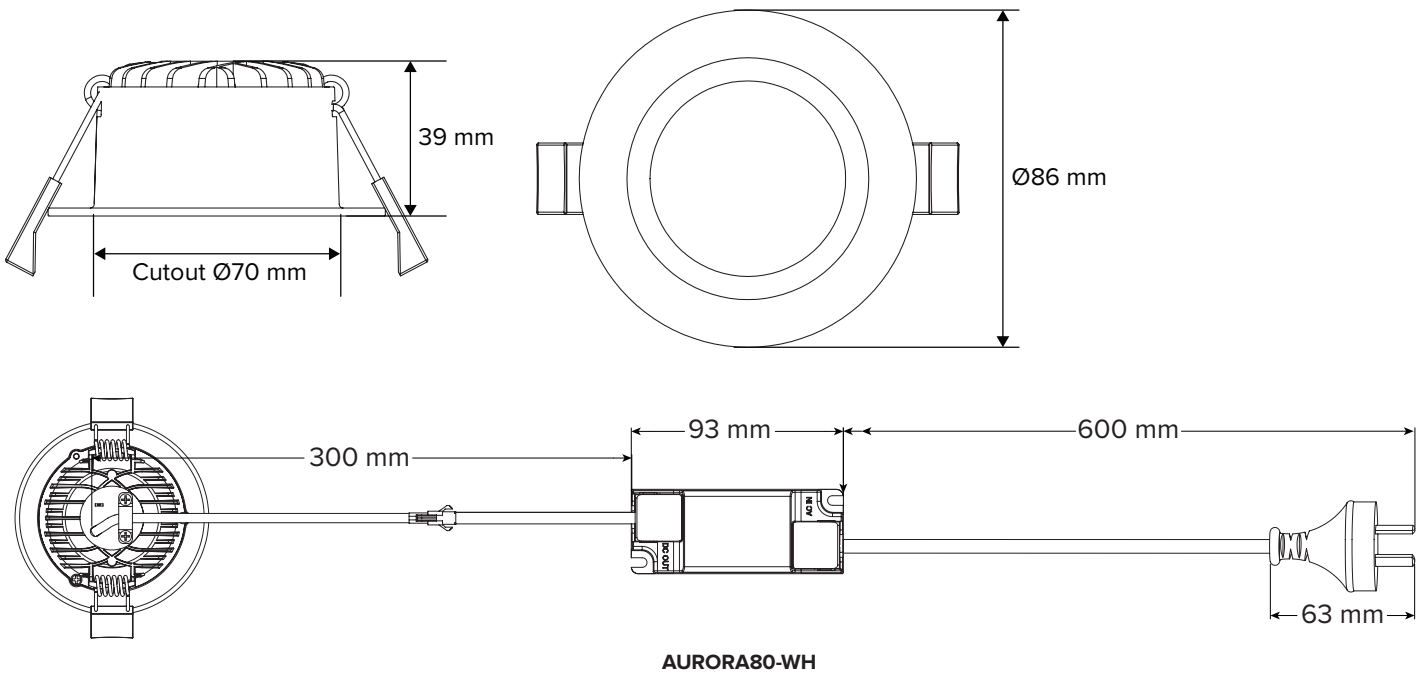
Please read these installation instructions carefully before installing or maintaining this equipment. The product is designed for installation and maintenance in accordance with relevant Australian standards (AS/NZS3000), by an authorised and licensed electrician. The installation instructions were correct at the time of print. To reflect changes in technology and Australian and New Zealand standards; Haneco reserves the right to amend the instructions without notice. Updated guidelines can be found on relevant brand web site.

**PRODUCT NAME: AURORA<sup>80</sup> Commercial LED Downlight**

Issue Date: 1/10/2024

Product code	AURORA80-WH
Power	7 W
Cutout	70 mm
CCT	3000 / 4000 / 5700 K
Dimming technology	Phase-Cut Dimmable (Trailing Edge, 1-100%)
IP rating	IP54
CRI	> 85
Flicker-free	Yes
Driver	Remote
Nominal voltage & Frequency	220-240Vac,50/60Hz
Power factor	> 0.9
Surge protection rating	Overload / Short Circuit
Inrush current	2.67 A @ 76 uS
Rated operating ambient temperature	-25 to 45°C
Electrical connection	0.9 m Flex & Plug
Installation type	Recessed
Warranty	5 yrs

### Line diagrams and dimensions



## AURORA<sup>80</sup>

Fitting Code:

AURORA80-WH

### Installation

To ensure proper functionality and safety, please read and follow all instructions carefully before using the product:

1. Cut a circular hole to the specified dimensions.
2. Insert the plug into the socket.
3. Select the desired CCT setting (WW, NW, CW).
4. Hold the mounting clips against the sides of the downlight, and insert the downlight into the cut-out, allowing the springs to retract onto the back of the ceiling.



#### Do not cover

Suitable for residential or commercial use in AU. Fitting cannot be covered with building insulation.

- Insulation must be placed as per clearance distances according to manufactures installation guide.

