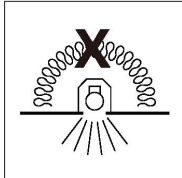


## CEDAR

Thank you for choosing Haneco CEDAR LED downlight.  
We strongly recommend that you read this manual carefully before installation.

### WARNING

- Installation must be carried out by a licenced electrician and in accordance with these instructions and relevant Australian standards and local regulations.
- Ensure input voltage conforms within product specifications.
- Ensure wires are securely connected.
- Before switching on, ensure all wires are correctly connected.
- The warranty is void if product is not installed according to the instructions.



### Do not cover

Suitable for residential or commercial use in AU.

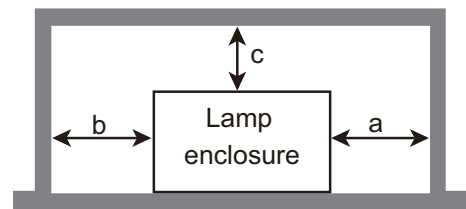
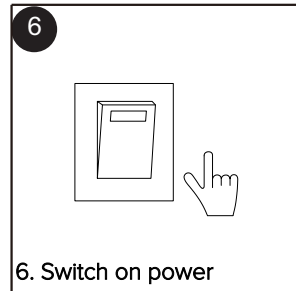
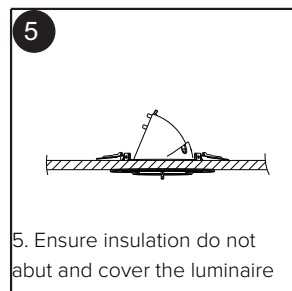
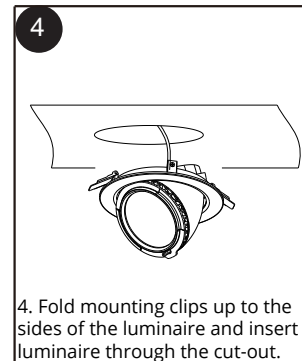
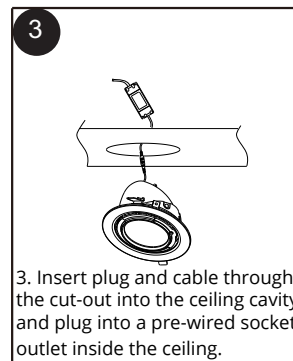
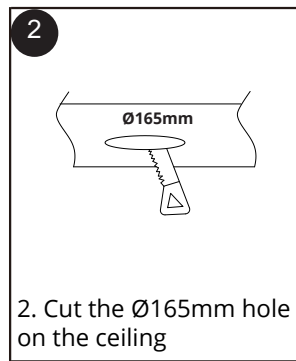
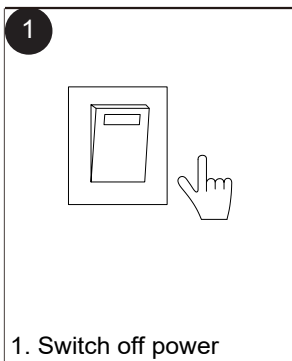
Fitting cannot be covered with building insulation.

Insulation must be placed as per clearance distances according to manufactures installation guide

### Specifications

Model	Cut-Out	Adjustable Angle	Dimmability	IC Rating ta25°C	IP Rating	Operating Temp
D38W195R4K60DF	Ø165mm	60°	Non-Dimmable	Do not Cover	IP20	-20 to 50°C

### Installation Instructions



**a:100mm,b:100mm,c:50mm**

**There is minimum 100mm of free space around and 50mm above the luminaire**

### Class II Solid Earthed Fitting

Note: Product technical information and specification may change over time without prior notice. For latest information, please contact our customer service or visit our website [www.haneco.com.au](http://www.haneco.com.au)

**PRODUCT CODE:** D38W195R4K60DF