

HANECO LED DIMMER INSTALLATION GUIDE

DUO^{G2}

Thanks for choosing our DUO^{G2} LED Floodlight products.
We strongly recommend that you read this manual carefully before installation.

PRODUCT CODE: DUO350WG2

WARNING

- This product must be installed by a licensed electrician in accordance with all the requirements of AS/NZS 3000 (current edition) and other relevant Standards and Regulations
 - ENSURE electricity is disconnected prior to installation
 - Indoor Use only. Not suitable for damp or explosive environments
- Complies to Australian Standards AS 60669.2.1 and AS CISPR 15 (x2 Capacitor IEC 60384-14)
 - No User serviceable parts inside
- Dimming circuits and product compatibility must be validated by the installer before installation.
Haneco cannot be responsible for third party changes in dimmer compatibility
- A load correction device – x2 Capacitor type 275Vac, 0.10µF, 40/110/56/B – has been included with your DUO^{G2} Dimmer. If flickering of the luminaire load is experienced, connect the load correction device in parallel with the connected load of the DUO^{G2} dimmer to improve performance.

Technical Specifications

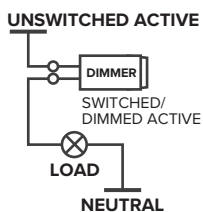
Operating Temp
0C° - 50C°
.....
Thermal Derating
25C° - 50C°
(350W - 175W)
.....

MAX DIMMER LOAD AND MULTI GANG

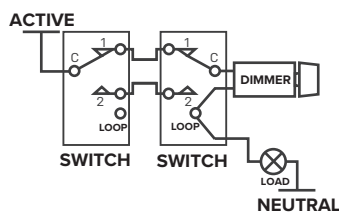
| | |
|------------|-----------------------|
| 350W 1** | **Multi Gang Derating |
| 300W 2** | |
| 250W 3** | |
| 200W 4** | |

Connection Diagram

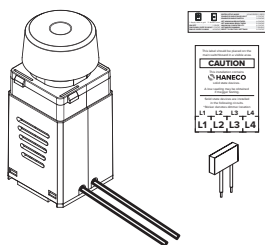
ONE WAY DIMMING
(ON/OFF ENABLED)



TWO WAY DIMMING
(ON/OFF DISABLED)

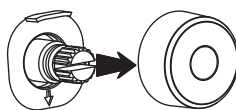


Contents



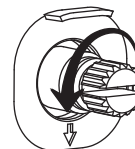
1

After wiring and installation onto grid plate, remove the rotary knob.



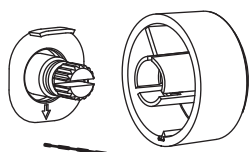
2

Turn the dimmer shaft anti-clockwise until the required minimum brightness is reached (or clockwise to set max brightness level).



3

Align the mechanical stop of the rotary knob toward the LEFT side of the mechanical stop on the dimmer housing to prevent further anti-clockwise adjustment (or RIGHT side when setting max brightness level).



4

Setup

| | |
|-----------------------|----------|
| ON/OFF | 1 CLICK |
| DIM DOWN OVER 30 MINS | 3 CLICKS |
| DIM UP OVER 30 MINS | 4 CLICKS |

| | |
|---------------------------------|-------------------|
| ENTER SETUP MODE | LONG PRESS 4 SECS |
| ENABLE/DISABLE BACKLIGHT | 2 CLICKS |
| ENABLE/DISABLE PUSH SWITCH* | 3 CLICKS |
| SET MINIMUM BRIGHTNESS / CANCEL | 4 CLICKS |
| SET MAXIMUM BRIGHTNESS / CANCEL | 5 CLICKS |
| MAXIMUM COMPATIBILITY | 6 CLICKS |
| OPTIMISED DIMMING | 7 CLICKS |
| RESET TO FACTORY SETTINGS | 9 CLICKS |



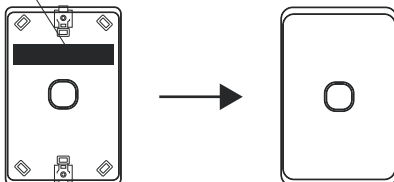
* The integrated push switch allows ON/OFF switching of LOAD by a momentary press of rotary knob. Two way switching is not possible with the integrated push switch.

DUO^{G2}

5

Optional: Apply configuration label to switch plate grid or place in a safe place for future reference.

| | | | |
|------------------------|-----------------|---------------------------|-------------------|
| 1. Apply label to grid | 2. Attach cover | ENTER SETUP MODE | LONG PRESS 2 SECS |
| | | ENABLE/DISABLE BACKLIGHT | 2 CLICKS |
| | | ENABLE/DISABLE SWITCH | 3 CLICKS |
| | | SET MINIMUM BRIGHTNESS | 4 CLICKS |
| | | SET MAXIMUM BRIGHTNESS | 5 CLICKS |
| | | MAXIMUM COMPATIBILITY | 6 CLICKS |
| | | OPTIMISED DIMMING | 7 CLICKS |
| | | RESET TO FACTORY SETTINGS | 9 CLICKS |
| ON/OFF | 1 CLICK | | |
| DIM DOWN OVER 30 MINS | 3 CLICKS | | |
| DIM UP OVER 30 MINS | 4 CLICKS | | |



- Compatibility - Dimming circuits and product compatibility must be validated by the installer before installation. Haneco cannot be responsible for third party changes in dimmer compatibility.
- Ripple injection – In some regions of Australia a slight flicker may be experienced when a luminaire is dimmed. This is due to power line signals sent by electricity companies to assist with switching of utilities. This effect is not a malfunction of the luminaire or dimmer but as a result of local installation conditions changing during the day. If this occurs, adjusting the dimmer back to maximum brightness may help minimize flickering.

Warranty

In accordance with Haneco Lighting's standard terms and conditions of sale, Haneco Lighting warrant this product to be free from defects in materials and or workmanship for a period as stated below for goods not subject to incorrect installation, maintenance, operation, mishandling, environmental, unauthorised modifications or electrical operating conditions outside the nominated product specification as detailed in these installation instructions. The benefits to you given by this warranty are in addition to other rights and remedies you have under law. Our goods come with guarantees that cannot be excluded under the Australian Consumer Law. You are entitled to a replacement or refund for a major failure and compensation for any other reasonably foreseeable loss or damage. You are also entitled to have the goods repaired or replaced if the goods fail to be of acceptable quality and the failure does not amount to a major failure. Warranty term – 36 months from date of purchase.

How to make a claim?

Step 1

Complete your online request at haneco.com.au/warranty (also available on mobile devices) or send us an email to warranty@haneco.com.au

Step 2

Ensure you provide the below documentation:

- RFC document with reason for request
- Photo(s) of the products including the batch number
- Original invoice number
- Make sure you send the purchase order for replacement products via EDI or orders@haneco.com.au if required.

Step 3

Confirmation from Haneco:

You will receive a confirmation email from Haneco, with a unique case number and should only respond to this original email to ensure your case is resolved in a timely manner. If all documentation is sent and complete you will be provided with a credit number or instructions for the next step.