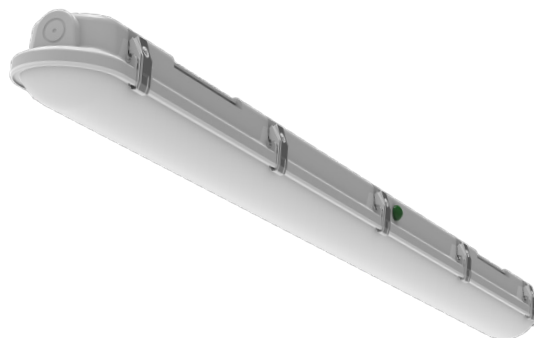
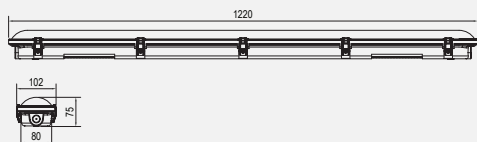


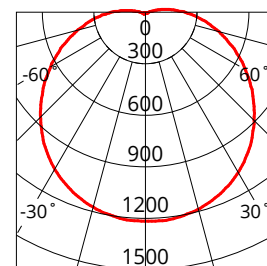
# DURA

DURA-12-EM-MS

SAP CODE: 2002145



Photometric Diagram



Unit: cd  
 - C0/180 128.6deg  
 - C90/270 113.5deg

## Emergency weatherproof batten with Intellisensor

The DURA LED batten features IP65 ingress protection, IK08 impact resistance rating and a unique foldable structure for easy installation.

It is ideal for use in utility-type applications such as car parks, workshops, storerooms and back of house areas.

### EMERGENCY

Battery	LiFePO4 6.4V 1.5Ah
Charge Time	13 hours
Discharge Duration 90mins then charge to full	2.5 hours
Discharge Duration 120mins then charge to full	3 hours
Emergency Classification	C0/D100,C90/D63
Test Facility	Manual Test
Operation	Maintained

### INTELLISENSOR

Sensor	Microwave
Detection Angle	150°
Mounting Height	3m      6m (max)
Detection Radius	100% (3m)    100% (8m) 50% (2m)      50% (6m)
Hold time	5s/5min/10min/30min
Stand-by DIM Level	10% / 30%
Detection Motion Speed	1m/s ≥3M
Daylight Sensor (Lux)	30 / 50 / 100 / Disable

### KEY INFORMATION

Watts	36W
Input Power	18W / 25W / 30W / 36W
Lumen Output	2425lm / 3089lm / 3706lm / 4318lm (4000K) 2474lm / 3242lm / 3917lm / 4627lm (4500K) 2474lm / 3083lm / 3726lm / 4367lm (5000K)
Install	Surface Mount, Suspended
Dimming Options	Non-Dimmable
Fitting Colour	Grey
Warranty	5yr
IP Rating	IP65
IK Rating	IK08
IC Rating	N/A
Emergency Classification	C0: D100, C90: D63
Rebate Scheme Approval	IPART; VEU (approval pending)

### PHOTOMETRIC

Efficacy	135lm / 124lm / 124lm / 120lm (4000K) 137lm / 130lm / 131lm / 129lm (4500K) 137lm / 123lm / 124lm / 121lm (5000K)
LED	SMD
CCT	4000K / 4500K / 5000K
Beam Angle	120°

### ELECTRICAL

Driver	Integral
Supply Input	220-240Va.c. 50/60Hz
Driver Output Voltage	57-108V
Power Factor	>0.9
LED Input Current (nominal)	175/240/290/350mA
Useful life @Ta25° (L70)	50,000hr

### CONSTRUCTION

Housing	PC
Optics	Polycarbonate Diffuser
Adjustable Angle	N/A
Fixings/Hardware	Mounting Clips, Cable gland, Suspension bracket
Connection Type	PA14 Terminals
Total Weight	2.02kg
Dimensions	1220 x 102 x 75mm
Operating Ambient Temp.	0 to 40°C
Electrical Classification	Class 1

### MAXIMUM SPACING FOR CLASS D LUMINAIRES

Luminaire Classification	Maximum Spacings Mounting Height (Metres)																
	2.1	2.4	2.7	3.0	3.3	3.6	4.0	4.5	5.0	6.0	7.0	8.0	9.0	10	15	20	
D25	14.2	14.7	15.3	15.7	16.1	16.5	16.9	17.3	17.7	18.1	18.3	18.2	17.9	17.3	7.7		
D32	15.4	16.1	16.7	17.2	17.6	18.0	18.5	19.1	19.5	20.2	20.6	20.7	20.6	20.3	14.6		
D40	16.7	17.4	18.0	18.6	19.1	19.6	20.1	20.8	21.3	22.1	22.7	23.0	23.1	23.1	19.4		
D50	18.0	18.7	19.4	20.1	20.7	21.2	21.8	22.5	23.2	24.2	24.9	25.4	25.7	25.9	23.7	15.2	
D63	19.4	20.3	21.1	21.8	22.4	23.0	23.7	24.5	25.2	26.4	27.4	28.1	28.6	28.9	28.0	22.5	