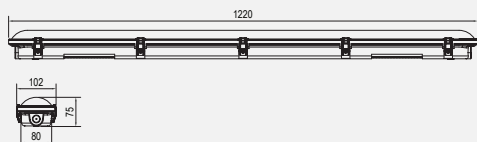


DURA

DURA-12-MS

SAP CODE: 2002144



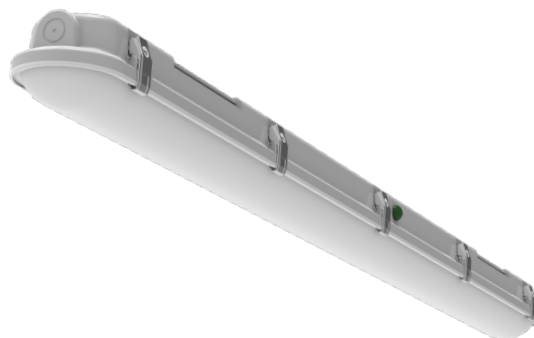
Intellisensor weatherproof batten

The DURA LED batten features IP65 ingress protection, IK08 impact resistance rating and a unique foldable structure for easy installation.

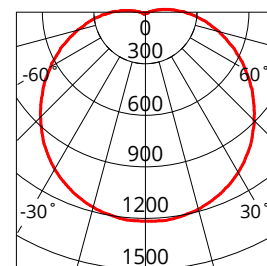
It is ideal for use in utility-type applications such as car parks, workshops, storerooms and back of house areas.

INTELLISENSOR

Sensor	Microwave	
Detection Angle	150°	
Mounting Height	3m	6m (max)
Detection Radius	100% (3m) 50% (2m)	100% (8m) 50% (6m)
Hold time	5s/5min/10min/30min	
Stand-by DIM Level	10% / 30%	
Detection Motion Speed	1m/s ≥3M	
Daylight Sensor (Lux)	30 / 50 / 100 / Disable	



Photometric Diagram


 Unit: cd
 - C0/180 128.6deg
 - C90/270 113.5deg

KEY INFORMATION

Watts	36W
Input Power	18W / 25W / 30W / 36W
Lumen Output	2425lm / 3089lm / 3706lm / 4318lm (4000K) 2474lm / 3242lm / 3917lm / 4627lm (4500K) 2474lm / 3083lm / 3726lm / 4367lm (5000K)
Install	Surface Mount, Suspended
Dimming Options	Non-Dimmable
Fitting Colour	Grey
Warranty	5yr
IP Rating	IP65
IK Rating	IK08
IC Rating	N/A
Rebate Scheme Approval	IPART; VEU (approval pending)

PHOTOMETRIC

Efficacy	135lm / 124lm / 124lm / 120lm (4000K) 137lm / 130lm / 131lm / 129lm (4500K) 137lm / 123lm / 124lm / 121lm (5000K)
LED	SMD
CCT	4000K / 4500K / 5000K
Beam Angle	120°

ELECTRICAL

Driver	Integral
Supply Input	220-240Va.c. 50/60Hz
Driver Output Voltage	57-108V
Power Factor	>0.9
LED Input Current (nominal)	175/240/290/350mA
Useful life @Ta25° (L70)	50,000hr

CONSTRUCTION

Housing	PC
Optics	Polycarbonate Diffuser
Adjustable Angle	N/A
Fixings/Hardware	Mounting Clips, Cable gland, Suspension bracket
Connection Type	PA14 Terminals
Total Weight	1.7kg
Dimensions	1220 x 102 x 75mm
Operating Ambient Temp.	-10 to 40°C
Electrical Classification	Class 1