



Emergency Kits (SKYLUX X3 Highbay)

SLHBEMKIT20T60
SAP CODE: 2002673

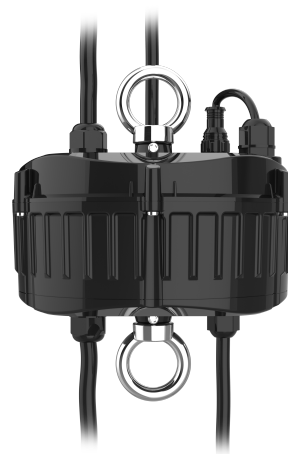
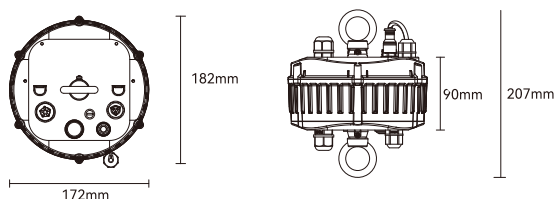
Emergency Made Simple.

Emergency Highbay Kit is an all-in-one emergency solution for LED highbays (SKYLUX X3), delivering reliable 2-hour emergency operation with smart self-testing, IP66 durability and easy maintenance.

APPLICATIONS

Storage Facilities, Manufacturing Facilities, Cool Rooms, General Industrial, Warehouses

DIMENSION DIAGRAMS



KEY INFORMATION

Power (Recharging)	8W
Power (Standby)	0.05W
Output Power	30W
Recharge Time	16 hrs
Operation Time	2 hrs
Body Colour	Black
IP Rating	IP66
Test Mode	Self Test + Manual Test
EM Classification	C0:D160 C90:D160 (SKYLUX120W-X3 120° and SKYLUX200W-X3 120°)
Battery	LiFePO4
Warranty	3 yrs

ELECTRICAL

Input Voltage	220-240Vac, 50/60Hz
Power Factor	> 0.5
Surge Protection	2KV(L-N) 4KV(L/N-PE)
Electrical Classification	Class I

OTHERS

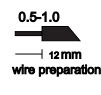
Body Material	Plastic
Ambient Temperature	Ta 0-45°C
Dimensions	172 x 182 x 207 mm

AC input	
Wire color	Connection
Brown	Un-switched line
Black	Switched line
Blue	Neutral
Green	Earth

Dimming input	
Wire color	Connection
Red	12V DC SW Do not connect
Purple	0-10V Dim+
Gray	0-10V Dim-

Output to lamp			
N°	Hole site	Wire color	Connection
1	L	Brown	AC Line (lamp)
2		Yellow / Green	Earth (lamp)
3	N	Blue	Neutral (lamp)

Dimming output		
N°	Wire color	Connection
12	Black	12V DC+ Do not connect
+	Purple	0-10V+ (lamp)
-	Pink	0-10V- (lamp)



IP66 Junction Box
*Not supplied with product
The terminal block must comply with AS/NZS60998-2-1/IEC60998