

HANECO LED FLOODLIGHT INSTALLATION GUIDE

STAX^{PLUS}

Thanks for choosing our **STAX^{PLUS}** LED Floodlight products.
We strongly recommend that you read this manual carefully before installation.

Fitting Code:

STAX70WPLUS

STAX150WPLUS

STAX300WPLUS



WARNING

- Installation must be carried out by a licenced electrician and in accordance with these instructions and relevant Australian standards and local regulations.
- Do not install any luminaire near any heat source.
- Before the installation make sure you have turned OFF the electricity supply.
- Ensure the product is connected to a 220-240V AC 50/60Hz power supply.
- If the external flexible cable or cord of this luminaire is damaged, it shall be exclusively replaced by the manufacturer or by a service agent or licenced electrician in order to avoid hazard.
- Non-user replaceable light source.
- The lens cover of the luminaire is secured by glue, unremovable.
- The warranty is void if product is not installed according to the instructions.
- Risk of overheating of fire if the clearance distances are compromised.
- Installers must ensure that the fitting selected is appropriate for the intended application and environment, consistent with Haneco's published product specifications.
- To maintain optimal performance, fittings should be kept clean to prevent excessive buildup of dust or debris, with periodic cleaning carried out as appropriate to site conditions.
- Products should not be exposed to harsh chemicals or corrosive substances that fall outside the published product specifications, as such conditions may affect performance or warranty coverage.
- Please refer to Haneco's warranty document for full details on the conditions of warranty.

MODEL	Power	Color temperature	Dimensions(mm)	CRI	Ambient temperature	IP Rating
STAX70WPLUS	30/50/70W	3/4/5000K	263x311x57	>80	-20 to 45°C	IP66
STAX150WPLUS	100/120/150W	3/4/5000K	331x391x57	>80	-20 to 45°C	IP66
STAX300WPLUS	200/250/300W	3/4/5000K	417x487x67	>80	-20 to 45°C	IP66

Installation Instructions



x2

x2

70W:
150W:
300W:

M10x85
M10x85
M12x105

Ø10.5*Ø20*2
Ø10.5*Ø20*2
Ø13*Ø24*2.5



x2

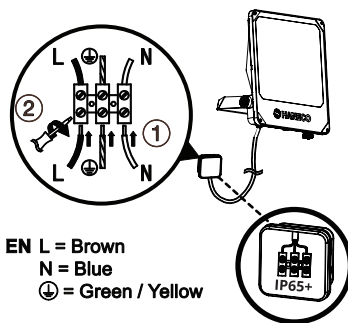
x2

70W:
150W:
300W:

Ø10.2*Ø15.1*5.2
Ø10.2*Ø15.1*5.2
Ø12.2*Ø18.1*6.2

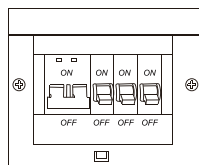
M10
M10
M12

*Not supplied with product

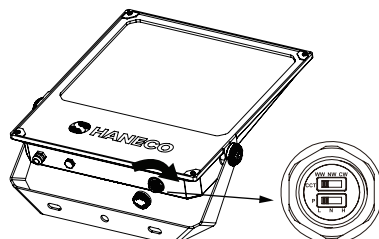


EN L = Brown
N = Blue
⊕ = Green / Yellow

IP66 Junction Box
*Not supplied with product
The terminal block must comply with AS/NZS60998-2-1/IEC60998



1. Turn off the power.



2. Open the fitting.

WW NW CW	CCT setting	70/150/200/300W
3000K	3000K	
4000K	4000K	
5000K	5000K	

LN H	Power setting	STAX70WPLUS	STAX150WPLUS	STAX300WPLUS
30W	30W			
50W	50W			
70W	70W			

3. Set the CCT and power switches to the required settings using the tables and close the fitting securely.

HANECO LED FLOODLIGHT INSTALLATION GUIDE

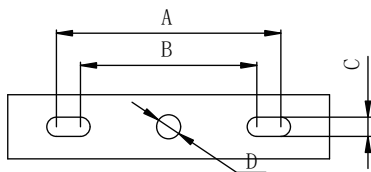
STAX^{PLUS}

Fitting Code:

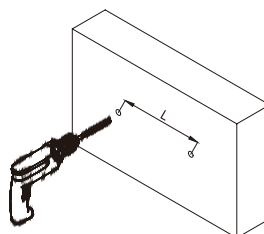
STAX70WPLUS

STAX150WPLUS

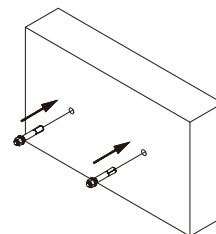
STAX300WPLUS



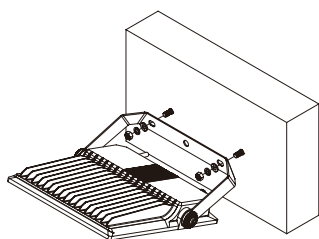
Model	A(mm)	B(mm)	C(mm)	D(mm)
70W	160	120	10.5	Ø10.5
150W	230	190	10.5	Ø10.5
300W	220	190	12	Ø15



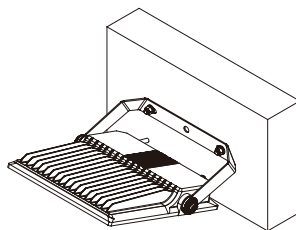
4. Use the dimensions shown in the diagram to mark and drill the fixing holes on the surface.



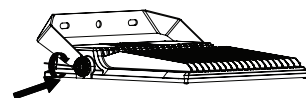
5. Insert the anchors into the wall and secure the fitting using the screws.



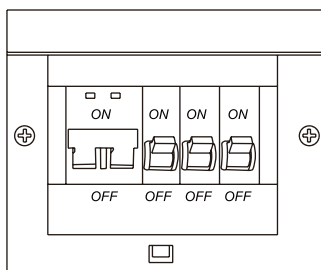
6. Fix the bracket onto the surface using the anchors and screws.



7. Tighten the screws



8. Loosen the side knobs, set the desired angle, then tighten firmly. STAXPLUS offers asymmetric light distribution. Adjust tilt to achieve required light coverage. .



ON

9. Turn on the power.