

HANECO LED LINEAR LIGHT INSTALLATION GUIDE

UNO

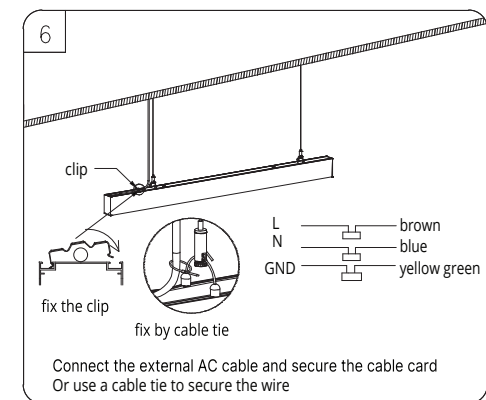
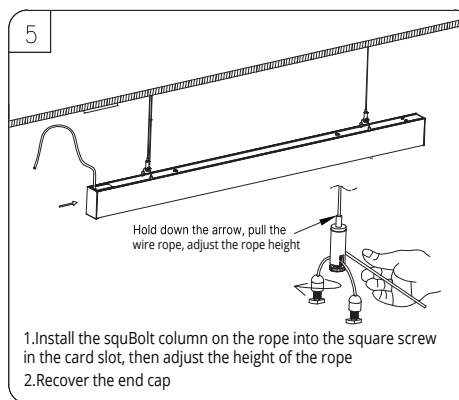
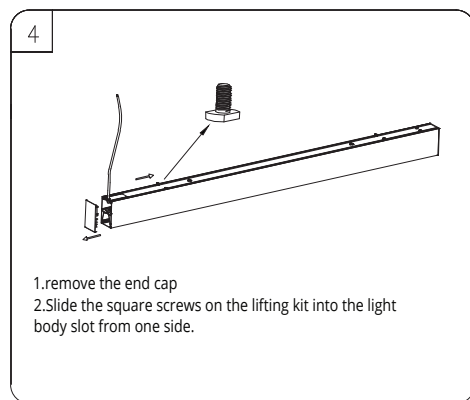
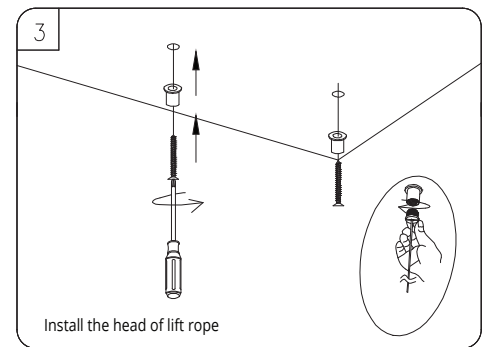
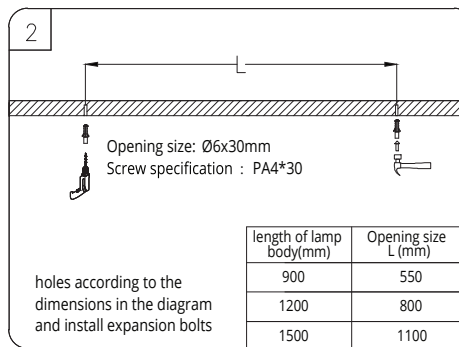
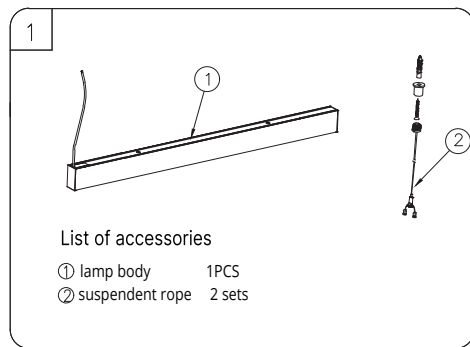
Thanks for choosing our UNO LED Linear light.

We strongly recommend that you read this manual carefully before installation.

Product Specifications

PRODUCT CODE	POWER	COLOUR TEMPERATURE	VOLTAGE/FREQUENCY	PF	IP RATING	OPERATING TEMPERATURE	NET WEIGHT
UNO30W09WH	30W	3000K / 4000K / 5000K	220 – 240V 50/60Hz	>0.9	IP40	- 20 - 40°C	1.55kg
UNO30W09BK	30W						1.55kg
UNO40W12WH	40W						1.7kg
UNO40W12BK	40W						1.7kg
UNO50W15WH	50W						2.2kg
UNO50W15BK	50W						2.2kg

Installation Instructions for suspension



WARNING

If the external flexible cable or cord of this luminaire is damaged, it shall be exclusively replaced by the manufacturer or his service agent or a similar qualified person in order to avoid a hazard.

The light source contained in this luminaire shall only be replaced by the manufacturer or his service agent or a similar qualified person.

The luminaire must be installed by a professional electrician.

Always switch the power off when wiring the luminaire.

Ensure input voltage conforms to the voltage range of product.

Ensure wires are securely connected.

Before switching on, ensure that all the wiring is correct.

Warranty is void if product is not installed according to the instructions.

Product Code: UNO30W09WH

UNO30W09BK

UNO40W12WH

UNO40W12BK

UNO50W15WH

UNO50W15BK

UNO

Installation Instructions for suspension with junction box

Note: Junction boxes are NOT included

1

Materials list of Luminaire

① lamp body	1PCS
② slings of suspendant	2 sets
③ double-hole junction box	1 set
④ single hole junction box	1 set

double-hole junction box single hole junction box

2

Opening size: Ø6x30mm
Screw specification: PA4*30

length of lamp body(mm)	Opening size L (mm)
900	550
1200	800
1500	1100

Open a fixed hole according to the size of the diagram, insert the expansion rubber plug, and drive the wire hole at the end of the wire

3

Attach the I-plate to the ceiling

4

Install the cable fixing head
The AC cable passes through the hole on the incoming cable junction box

5

L GND N
L N GND

L — brown
N — blue
GND — yellow green

The AC cable of the lamp body is routed through the cable hole and on the junction box
The mains is connected to the terminal in the junction box, Connect L,GND,N in sequence

6

Fix the junction box to the I-plate and lock it
Tighten the wire screws

7

1.Remove the end cap
2.Slide the square screws into the lamp body from one side

8

Line cards

The line card is secured Cable tie fixation

Hold down the arrow, pull the wire rope, adjust the rope height

1.Install the studs on the lifting line into the square screws in the card slot and adjust the lifting height

UNO

Installation Instructions for ceiling mount

