

# SKYPAD150W-I

## QUICK FACTS

Input power	<b>150W</b>
Power Factor	<b>≥0.9</b>
IP Rating	<b>65</b>
Dimming	<b>1-10V</b>
Lumen output	<b>17700lm</b>
CCT	<b>5000K</b>
CRI	<b>&gt;80</b>
Beam Angle	<b>110°</b>
Fascia Colour	<b>Black</b>
Installation	<b>Suspended &amp; Surface Mounted</b>
Warranty	<b>5 years</b>

## PRODUCT SPECIFICATIONS

Supply Voltage	<b>240-265V</b>
Supply Frequency	<b>50-60Hz</b>
Cable	<b>2.5M Flex&amp;Plug</b>
Body	<b>Aluminium</b>
Diffuser	<b>PC</b>
Driver	<b>Fixed Remote</b>
Weight	<b>G.W : 5.1kgs</b> <b>N.W : 4kgs</b>
Ambient Temp	<b>-20°C - 50°C</b>
Avg. lifetime	<b>≥60,000 hrs@ ta 55°C</b>

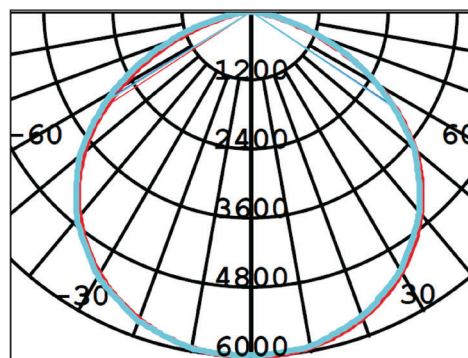
**Accessory**  
Metal Reflector, Wire  
Guard, Frosted Diffuser,  
Prismatic Reflector

**Option:**  
Sunmax daylight harvesting  
sensor

PHOTO



PHOTOMETRIC DIAGRAM

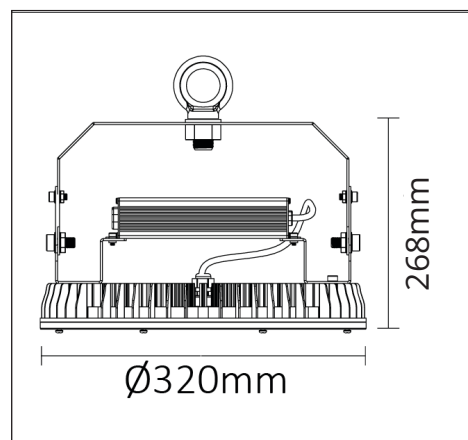


UNIT: cd

— C0/180 113.5deg

— C90/270 114.2deg

DIMENSIONS



Subject to change without notice, errors and omission excepted. Always make sure to use the most recent release.

# SKYPAD150W-I

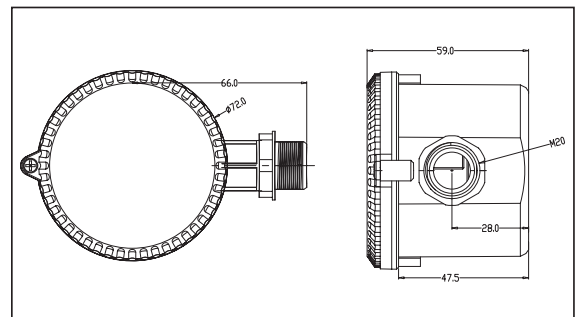
## QUICK FACTS

- 1-10V output control
- Combine Daylight & High frequency motion detection in one unit to achieve on/off control
- 360° detection angle
- Detection range, Hold time, Standby time, and Daylight threshold can be preset

PHOTO



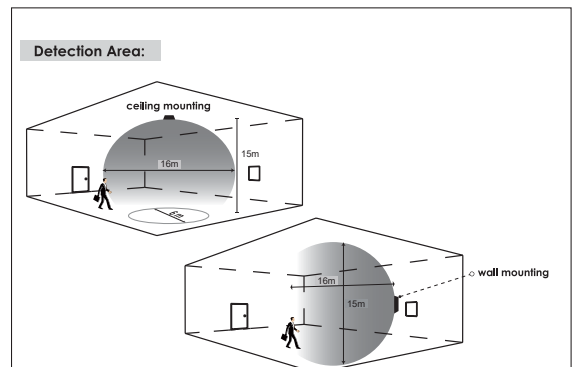
DIMENSIONS



## PRODUCT SPECIFICATIONS

Load wattage	Max. 500W
Standby power	<0.5W
Microwave frequency	5.8Ghz1
Detection area	<0.2mW
Detection Sensitivity	15mx16m (DxH)
Hold time	50%/100%
Standby time	0s to 30min+
Standby dimming level	10% to 50%
Daylight threshold	50lux/Disable
Dimensions (LxWxH)	125x51x44mm
IP rating	65

DETECTION AREA



SETTINGS

**Dip Switch Settings:**

Detection Range	Hold Time	Daylight Sensor	Standby Period	Standby Dimming level
1	2 3	4	5 6	7 8
100%	5s	Disable	0s	10%
50%	1min	50Lux	5min	20%
	10min		30min	30%
	30min		+∞	50%

**Note:** 1. "0s" means on/off control.  
 2. "+∞" means bi-level dimming control, fixture never switches off.  
 3. Factory default setting: 100%, 5s, Disable, 5min, 10%.

Subject to change without notice, errors and omission excepted. Always make sure to use the most recent release.