

SKYPAD200W-I

QUICK FACTS

Input power	200W
Power Factor	≥0.9
IP Rating	65
Dimming	Optional
Lumen output	28000lm
CCT	5000K
CRI	>80
Beam Angle	110°
Fascia Colour	Black
Installation	Suspended & Surface Mounted
Warranty	5 years

PRODUCT SPECIFICATIONS

Supply Voltage	240-265V
Supply Frequency	50-60Hz
Cable	2.5M Flex&Plug
Body	Aluminium
Diffuser	PC
Driver	Fixed Remote
Weight	G.W : 6kgs N.W : 5.5kgs
Ambient Temp	-20°C - 50°C
Avg. lifetime	≥60,000 hrs@ ta 55°C

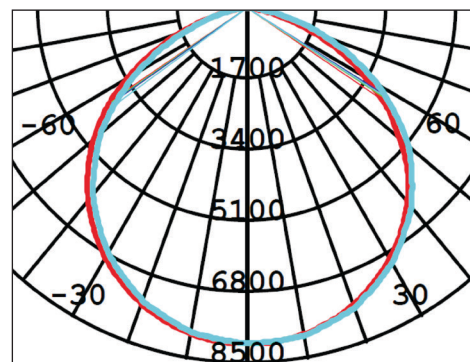
Accessory
Metal Reflector, Wire
Guard, Frosted Diffuser,
Prismatic Reflector

Option:
Sunmax daylight harvesting
sensor

PHOTO



PHOTOMETRIC DIAGRAM

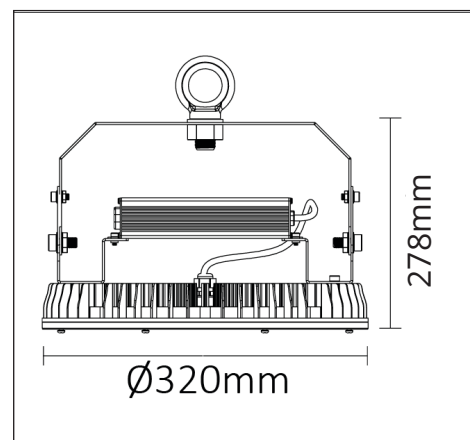


UNIT: cd

— C0/180 112.1deg

— C90/270 111.8deg

DIMENSIONS



Subject to change without notice, errors and omission excepted. Always make sure to use the most recent release.

SKYPAD200W-I

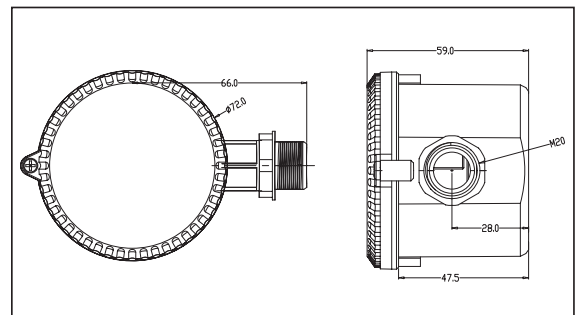
QUICK FACTS

- 1-10V output control
- Combine Daylight & High frequency motion detection in one unit to achieve on/off control
- 360° detection angle
- Detection range, Hold time, Standby time, and Daylight threshold can be preset

PHOTO



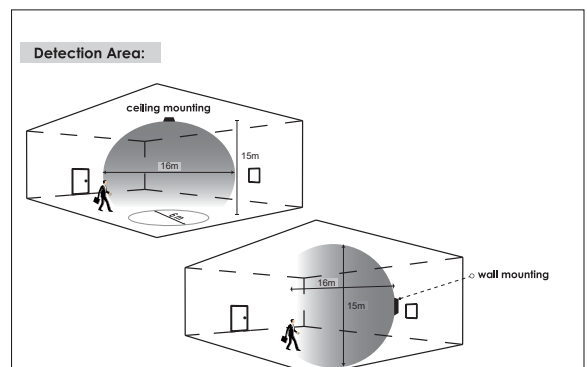
DIMENSIONS



PRODUCT SPECIFICATIONS

Load wattage	Max. 500W
Standby power	<0.5W
Microwave frequency	5.8Ghz1
Detection area	<0.2mW
Detection Sensitivity	15mx16m (DxH)
Hold time	50%/100%
Standby time	0s to 30min+
Standby dimming level	10% to 50%
Daylight threshold	50lux/Disable
Dimensions (LxWxH)	125x51x44mm
IP rating	65

DETECTION AREA



SETTINGS

Dip Switch Settings:							
Detection Range	Hold Time		Daylight Sensor	Standby Period		Standby Dimming level	
1	2	3	4	5	6	7	8
<input type="checkbox"/> 100%	<input type="checkbox"/> 5s	<input type="checkbox"/> 5s	<input type="checkbox"/> Disable	<input type="checkbox"/> 0s	<input type="checkbox"/> 10%	<input type="checkbox"/> 10%	<input type="checkbox"/> 10%
<input type="checkbox"/> 50%	<input type="checkbox"/> 1min	<input type="checkbox"/> 1min	<input type="checkbox"/> 50Lux	<input type="checkbox"/> 5min	<input type="checkbox"/> 20%	<input type="checkbox"/> 20%	<input type="checkbox"/> 20%
	<input type="checkbox"/> 10min	<input type="checkbox"/> 10min		<input type="checkbox"/> 30min	<input type="checkbox"/> 30%	<input type="checkbox"/> 30%	<input type="checkbox"/> 30%
	<input type="checkbox"/> 30min	<input type="checkbox"/> 30min		<input type="checkbox"/> +∞	<input type="checkbox"/> 50%	<input type="checkbox"/> 50%	<input type="checkbox"/> 50%

Note: 1. "0s" means on/off control.
 2. "+∞" means bi-level dimming control, fixture never switches off.
 3. Factory default setting: 100%, 5s, Disable, 5min, 10%.

Subject to change without notice, errors and omission excepted. Always make sure to use the most recent release.