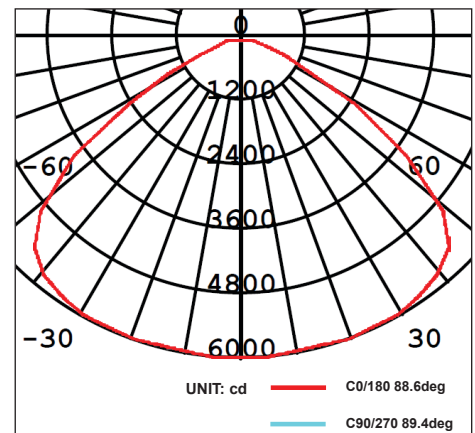


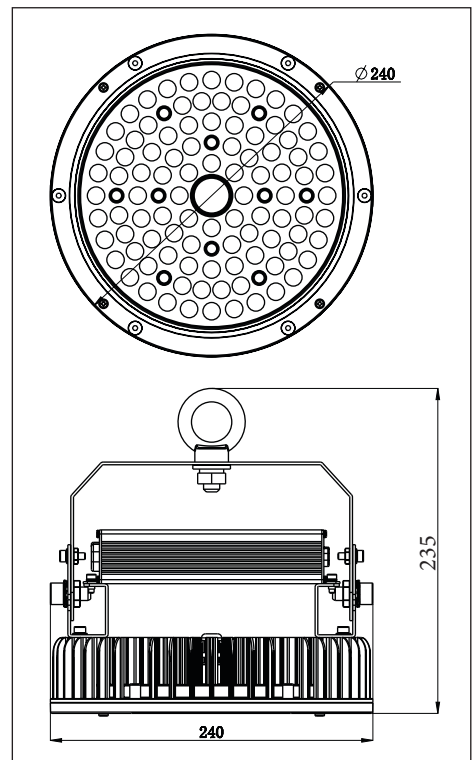
PHOTO



PHOTOMETRIC DIAGRAM



DIMENSIONS



## QUICK FACTS

Input power	<b>120W</b>
Power Factor	<b>≥0.9</b>
IP Rating	<b>65</b>
Dimming	<b>1-10V</b>
Lumen output	<b>16800lm</b>
CCT	<b>5000K</b>
CRI	<b>80</b>
Beam Angle	<b>110°</b>
Fascia Colour	<b>Black</b>
Installation	<b>Surface/Suspension</b>
Warranty	<b>5 years</b>

## PRODUCT SPECIFICATIONS

Supply Voltage	<b>220-240V</b>
Supply Frequency	<b>50-60Hz</b>
Cable	<b>2.5M Flex&amp;Plug</b>
Body	<b>Aluminium</b>
Diffuser	<b>PC</b>
Driver	<b>Integral</b>
Weight	<b>G.W : 3.80kgs</b>
	<b>N.W : 3.30kgs</b>
Ambient Temp	<b>-20°C - 50°C</b>
Avg. lifetime	<b>≥50,000 hrs@ ta 25°C</b>

Option:  
DALI Dimming,  
Sunmax daylight harvesting sensor

Subject to change without notice, errors and omission excepted. Always make sure to use the most recent release.

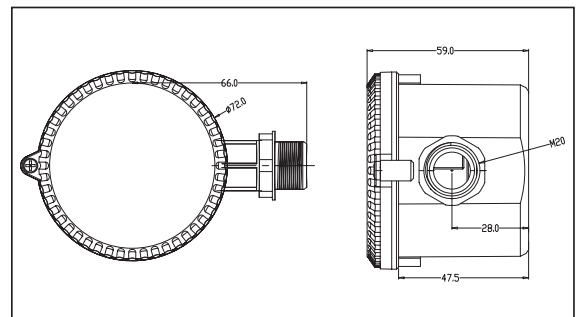
## QUICK FACTS

- 1-10V output control
- Combine Daylight & High frequency motion detection in one unit to achieve on/off control
- 360° detection angle
- Detection range, Hold time, Standby time, and Daylight threshold can be preset

PHOTO



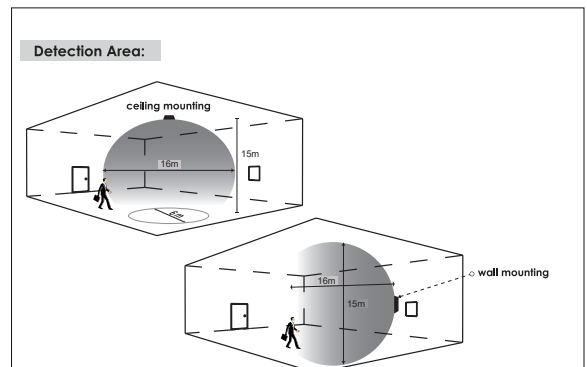
DIMENSIONS



## PRODUCT SPECIFICATIONS

Load wattage	<b>Max. 500W</b>
Standby power	<b>&lt;0.5W</b>
Microwave frequency	<b>5.8Ghz1</b>
Detection area	<b>&lt;0.2mW</b>
Detection Sensitivity	<b>15mx16m (DxH)</b>
Hold time	<b>50%/100%</b>
Standby time	<b>0s to 30min+</b>
Standby dimming level	<b>10% to 50%</b>
Daylight threshold	<b>50lux/Disable</b>
Dimensions (LxWxH)	<b>125x51x44mm</b>
IP rating	<b>65</b>

DETECTION AREA



SETTINGS

**Dip Switch Settings:**

Detection Range	Hold Time		Daylight Sensor	Standby Period		Standby Dimming level	
1	2	3	4	5	6	7	8
<input type="checkbox"/> 100%	<input type="checkbox"/> 5s	<input type="checkbox"/> 5s	<input type="checkbox"/> Disable	<input type="checkbox"/> 0s	<input type="checkbox"/> 0s	<input type="checkbox"/> 10%	<input type="checkbox"/> 10%
<input type="checkbox"/> 50%	<input type="checkbox"/> 1min	<input type="checkbox"/> 1min	<input type="checkbox"/> 50Lux	<input type="checkbox"/> 5min	<input type="checkbox"/> 5min	<input type="checkbox"/> 20%	<input type="checkbox"/> 20%
	<input type="checkbox"/> 10min	<input type="checkbox"/> 10min		<input type="checkbox"/> 30min	<input type="checkbox"/> 30min	<input type="checkbox"/> 30%	<input type="checkbox"/> 30%
	<input type="checkbox"/> 30min	<input type="checkbox"/> 30min		<input type="checkbox"/> +∞	<input type="checkbox"/> +∞	<input type="checkbox"/> 50%	<input type="checkbox"/> 50%

**Note:** 1. "0s" means on/off control.  
 2. "+∞" means bi-level dimming control, fixture never switches off.  
 3. Factory default setting: 100%, 5s, Disable, 5min, 10%.

1 2 3 4 5 6 7 8

Subject to change without notice, errors and omission excepted. Always make sure to use the most recent release.