

PANNELLO

WARNING

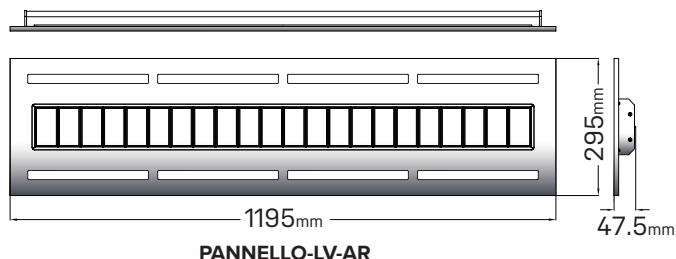
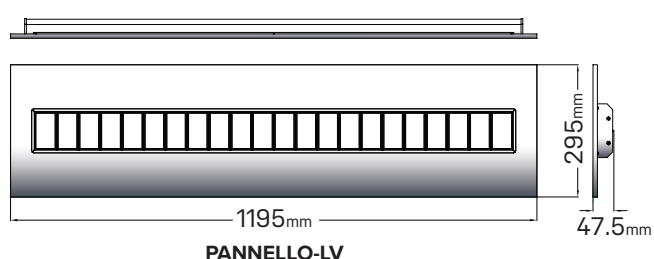
The luminaire must be installed by a professional electrician. Switch power off prior to installation. Ensure input voltage conforms to the voltage range of product. Ensure wires are securely connected. Before switching on, ensure that all the wiring is correct. The warranty is void if product is not installed according to the below instructions. Please read these instructions carefully before using this product and keep for future reference.

Thanks for choosing our PANNELLO LED troffer.
We strongly recommend that you read this installation guide carefully before installation.

Product Specifications

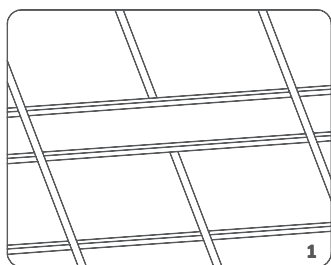
PRODUCT CODE	SAP CODE	FEATURE	CCT	POWER	LUMEN	NET WEIGHT
PANNELLO-LV PANNELLO-LV-AR	2001975 2001976	Tritone + Power Switchable	3000K 4000K 5000K	26W	2760lm 2910lm 2870lm	5.3kg
				32W	3330lm 3560lm 3470lm	
				36W	3630lm 3900lm 3810lm	
				40W	3820lm 4090lm 3950lm	

Dimensions

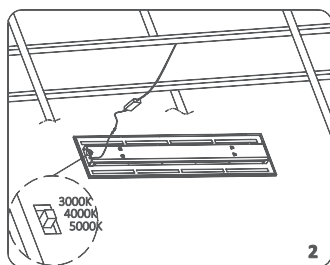


Installation Instructions

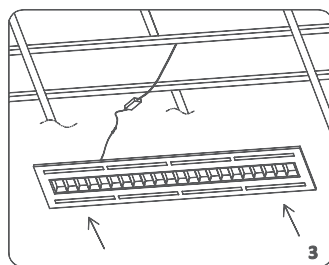
For ceiling embedded installation



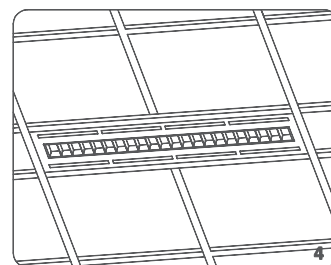
1. Remove existing decorative ceiling board where the desired installation will be.



2. Toggle the dip switch at the back of the luminaire to the required colour temperature setting, and then connect the input and output power cord properly.



3. Put the luminaire in place.



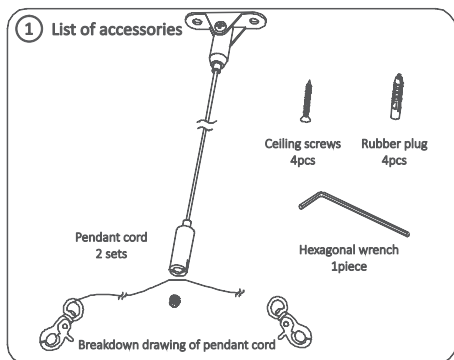
4. Installation is now complete.

PANNELLO

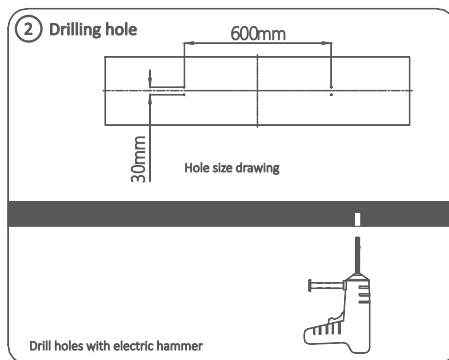
Installation Instructions

NOTE: Suspension kit sold separately.

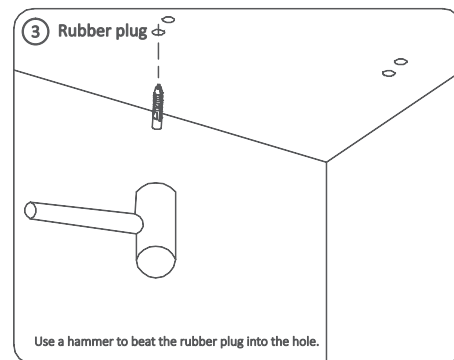
For ceiling suspended installation



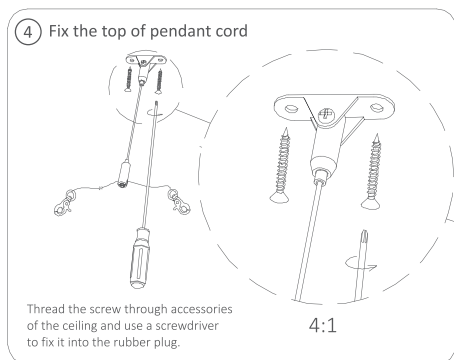
1. Ensure you have the complete list of accessories required for suspended installation.



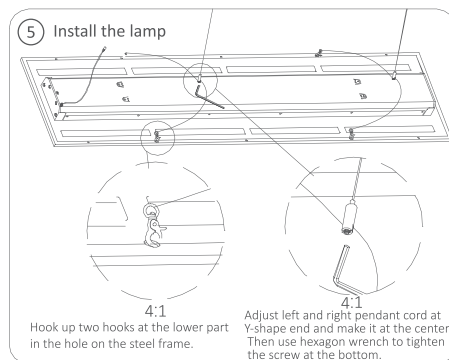
2. Drill four holes as specified in the illustration.



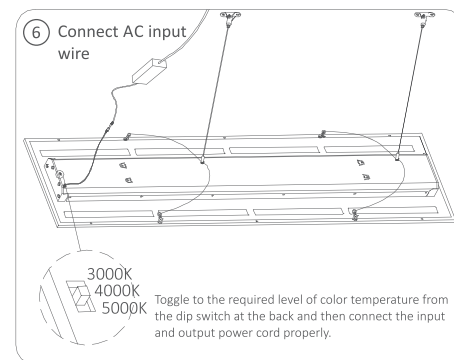
3. Using a hammer, beat the four rubber plugs into the four holes.



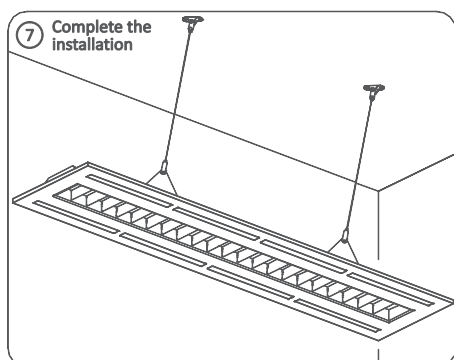
4. Thread the screws through accessory holes into the ceiling and use a screwdriver to fix it into the rubber plugs.



5. Install the luminaire: hook up two hooks at the lower part in the hole on the steel frame. Adjust left and right pendant cord at Y-shape end to make centred. Then use hexagon wrench to tighten the screw at the bottom.



6. Connect AC input wire, toggle the dip switch at the back of the luminaire to the required colour temperature setting, and then connect the input and output power cord properly.



7. Installation is now complete.