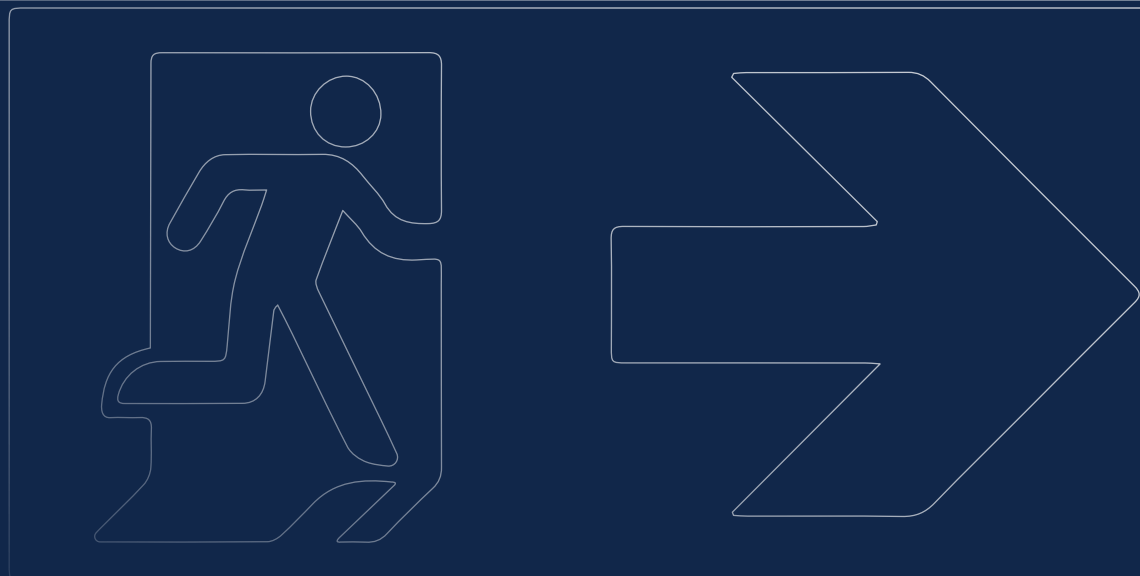




EXIT AND EMERGENCY

| | |
|--------------------------------|-----|
| LUME | 202 |
| LUMEREMOTE | 206 |
| ESODO | 208 |
| ESODO ^{IP65} | 210 |
| ESODO ^{EDGE} | 212 |
| ESODO ^{EDGE RECESSED} | 214 |
| ESODO ^{EDGE 40M} | 216 |
| DUET | 218 |
| ACCESSORIES | 220 |
| EMERGENCY RANGE | 222 |





Project: CMI Toyota Southside, SA
Provider / Installer: TMK Consulting Engineers & Dead Short Electrical





Engineered for optimal product spacing

Up to D63 emergency classification rating

Simple and quick maintenance check

Single test button

Suitable for food manufacturing areas

HACCP approved

Complies to AS2293.2 emergency standard

LiFePO4 battery

Provides seamless adaptability into existing installations

2 fascia sizes included

LUME

A reliable path to building safety.

LUME is a sleek, emergency luminaire suitable for a large variety of applications, due to its recessed and surface mounting options. Using reliable lithium iron phosphate (LiFePo4 3.2V) battery technology, this state-of-the-art product ensures low maintenance and energy efficiency.

LiFePO₄
LiFePO₄
 Battery Reliability

IP40
 Ingress Protection Rating

IC-4
 Covered & Abutted

CLASS II
 Double Insulated

>85
 CRI Colour Rendering Index

5yr
 1yr Battery

PRODUCT RANGE



| Product Code | LUME1WD40 | LUME1WD40-BK | LUME3WD63 | LUME3WD63-BK |
|--------------------------|--------------|--------------|--------------|--------------|
| SAP Code | 2002009 | 2002176 | 2001853 | 2001872 |
| Lumen Output | 189 lm | 189 lm | 340 lm | 340 lm |
| CCT | 5700 K | 5700 K | 5700 K | 5700 K |
| Power (Charging) | 1.5 W | 1.5 W | 4 W | 4 W |
| Power (Standby) | 0.5 W | 0.5 W | 0.5 W | 0.5 W |
| Battery Size | 1.5 Ah | 1.5 Ah | 3.6 Ah | 3.6 Ah |
| Test Type | Manual Test | Manual Test | Manual Test | Manual Test |
| Battery Type | LiFePo4 3.2V | LiFePo4 3.2V | LiFePo4 3.2V | LiFePo4 3.2V |
| Recharge Time | 16 hrs | 16 hrs | 16 hrs | 16 hrs |
| Discharge Time | > 2 hrs | > 2 hrs | > 2 hrs | > 2 hrs |
| Emergency Classification | D40 | D40 | D63 | D63 |
| Classification | 150° | 150° | 155° | 155° |
| Hole Cutout Size | Ø92 mm | Ø92 mm | Ø92 mm | Ø92 mm |
| Dimensions | Ø110 x 49 mm | Ø110 x 49 mm | Ø110 x 49 mm | Ø110 x 49 mm |
| Product Colour | White | Black | White | Black |
| Weight | 0.30 kg | 0.30 kg | 0.30 kg | 0.30 kg |



| Product Code | LUME3WD63-SM | LUME3WD63-SM-BK |
|--------------------------|---------------|-----------------|
| SAP Code | 2001869 | 2001873 |
| Lumen Output | 340 lm | 340 lm |
| CCT | 5700 K | 5700 K |
| Power (Charging) | 4 W | 4 W |
| Power (Standby) | 0.5 W | 0.5 W |
| Battery Size | 1.5 Ah | 1.5 Ah |
| Test Type | Manual Test | Manual Test |
| Battery Type | LiFePo4 3.2V | LiFePo4 3.2V |
| Recharge Time | 16 hrs | 16 hrs |
| Discharge Time | > 2 hrs | > 2 hrs |
| Emergency Classification | D63 | D63 |
| Classification | 155° | 155° |
| Hole Cutout Size | N/A | N/A |
| Dimensions | Ø165 x 105 mm | Ø165 x 105 mm |
| Product Colour | White | Black |
| Weight | 1.00 kg | 1.00 kg |

COMMON SPECIFICATIONS

| | |
|-------------------|--------------------------------------|
| Body Material | Polycarbonate |
| Diffuser Material | Polycarbonate (Clear) |
| IP Rating | IP40 |
| IC Rating | IC-4 (Recessed models) |
| CRI | 1WD40 = CRI > 80 3WD63 = CRI > 85 |
| SDCM | < 3 |
| Warranty | 5yrs (1yr battery) |
| Driver | Integral |
| Power Lead | 1m Flex & Plug |
| Power Connection | Terminal Block |
| Input Voltage | 220-240Vac, 50/60Hz |

| | |
|-------------------------------|---------------------------|
| Electrical Classification | Class II |
| Protection | Overload / Short Circuit |
| Projected Lifespan | > 50,000hrs @Ta25°C (L70) |
| Operating Ambient Temperature | 0 to 40°C |
| AS/NZS Standard | 60598 / 2293.3 |
| Emergency Type | Non-Maintained |
| Charger Operation | Continuous |

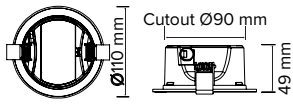
APPLICATIONS

Hallways / Entrance / Staircase
 Theatre Rooms
 Kitchen / Food Prep
 Showrooms / Retail Spaces
 Offices / Meeting Rooms
 Function Areas
 Education Facilities
 Restaurants / Café's
 Storage Rooms

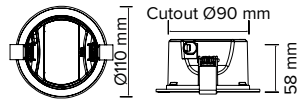
Find out more



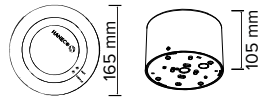
DIMENSIONS



LUME1WD40 / LUME1WD40-BK



LUME3WD63 / LUME3WD63-BK



LUME3WD63-SM /
LUME3WD63-SM-BK

ACCESSORIES

Mounting Supports



Suspension Kit for
Surface Mount Models
SM-ENC-SUSKIT*
(SAP 2001871)





Engineered for optimal product spacing

Up to D63 emergency classification rating

Simple and quick maintenance check

Single test button



Complies to AS2293.3 emergency standard

LiFePo4 battery

Expand the lighting possibilities with different mounting configuration

Versatile mounting options

Provides seamless adaptability into existing installations

3 fascia sizes included

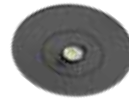
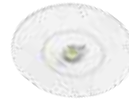
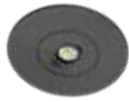
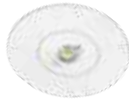
LUMEREMOTE

A reliable path to building safety.

LUME REMOTE is a sleek, emergency luminaire suitable for an extended variety of applications. The foldable flex driver enables installation in locations with limited ceiling space. Using reliable lithium iron phosphate (LiFePo4) battery technology, this state-of-the-art product ensures low maintenance and energy efficiency. Compliant to AS/NZS 2293.3, offering D40/D63 emergency classification.



PRODUCT RANGE



| Product Code | LUME-D40-REMOT | LUME-D40-RE-BK | LUME-D63-REMOT | LUME-D63-RE-BK |
|--------------------------|-------------------|-------------------|-------------------|-------------------|
| SAP Code | 2002088 | 2002177 | 2002089 | 2002178 |
| Power | 1 W | 1 W | 2.5 W | 2.5 W |
| Lumen Output | 169 lm | 169 lm | 300 lm | 300 lm |
| CCT | 5700 K | 5700 K | 5700 K | 5700 K |
| Power (Charging) | 2.5 W | 2.5 W | 4.5 W | 4.5 W |
| Power (Standby) | 1 W | 1 W | 2.5 W | 2.5 W |
| Battery Size | 1.5 Ah | 1.5 Ah | 3.6 Ah | 3.6 Ah |
| Test Type | Manual Test | Manual Test | Manual Test | Manual Test |
| Battery Type | LiFePo4 3.2V | LiFePo4 3.2V | LiFePo4 3.2V | LiFePo4 3.2V |
| Recharge Time | 16 hrs | 16 hrs | 16 hrs | 16 hrs |
| Discharge Time | 3 hrs | 3 hrs | 3 hrs | 3 hrs |
| Emergency Classification | D40 | D40 | D63 | D63 |
| Beam Angle | 150° | 150° | 155° | 155° |
| Hole Cutout Size | Ø43 / 92 / 110 mm | Ø43 / 92 / 110 mm | Ø43 / 92 / 110 mm | Ø43 / 92 / 110 mm |
| Dimensions | Ø55 x 33 mm | Ø55 x 33 mm | Ø55 x 33 mm | Ø55 x 33 mm |
| Product Colour | White | Black | White | Black |
| Weight | 0.30 kg | 0.30 kg | 0.30 kg | 0.30 kg |

COMMON SPECIFICATIONS

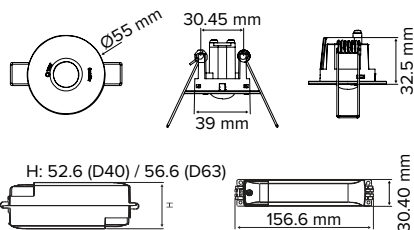
| | |
|-------------------|-----------------------|
| Body Material | Polycarbonate |
| Diffuser Material | Polycarbonate (Clear) |
| IP Rating | IP20 |
| IC Rating | IC-4 |
| CRI | > 85 |
| SDCM | < 3 |
| Warranty | 5yrs (1yr battery) |
| Driver | Remote |
| Power Lead | 1m Flex & Plug |
| Input Voltage | 220-240Vac, 50/60Hz |

| | |
|-------------------------------|---------------------------|
| Electrical Classification | Class II |
| Protection | Overload / Short Circuit |
| Projected Lifespan | > 50,000hrs @Ta25°C (L70) |
| Operating Ambient Temperature | 0 to 40°C |
| AS/NZS Standard | 60598 / 2293.3 |
| Emergency Type | Non-Maintained |
| Charger Operation | Continuous |

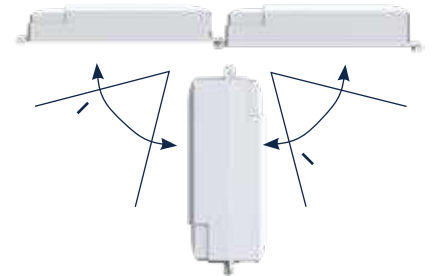
APPLICATIONS

Hallways / Entrance / Staircase
 Theatre Rooms
 Showrooms / Retail Spaces
 Offices / Meeting Rooms
 Function Areas
 Education Facilities
 Restaurants / Cafés
 Storage Rooms

DIMENSIONS



LUME-D40-REMOT / LUME-D40-REMOT-BK/
 LUME-D63-REMOT / LUME-D63-RE-BK



Smart foldable driver

Find out more



Simple and quick maintenance check

Single test button

Complies to AS/NZS2293.3 emergency standard

LiFePo4 battery



Ensure safety throughout the building

24m viewing distance

The correct sign for every application

Selection of pictograms included

Blend fitting into the existing environment seamlessly

Choice of colour finishes

ESODO

Conventional and reliable.

ESODO is a slim double-sided 24m LED emergency EXIT sign presented in a conventional and discrete box design. With the installer in mind, it allows for easy and quick surface installation.



LiFePO4
Battery Reliability



IP20
Ingress Protection Rating



RCM
Australian Standard Compliance



5yr
1yr Battery

PRODUCT RANGE



| Product Code | ESD24M-BOX | ESD24M-BOX-BK |
|--------------------------|----------------------|----------------------|
| SAP Code | 2002086 | 2002189 |
| Power | 3 W | 3 W |
| Lumen Output | 40 lm | 40 lm |
| CCT | 6000 K | 6000 K |
| Power (Charging) | 3 W | 3 W |
| Power (Standby) | 0.33 W | 0.33 W |
| Battery Size | 1.5 Ah | 1.5 Ah |
| Test Type | Manual Test | Manual Test |
| Battery Type | LiFePo4 3.2V | LiFePo4 3.2V |
| Recharge Time | 16 hrs | 16 hrs |
| Discharge Time | 1.5 hrs | 1.5 hrs |
| Emergency Classification | C0: D2.5 / C90: D2.0 | C0: D2.5 / C90: D2.0 |
| Beam Angle | 240° | 240° |
| Dimensions | 357 x 60 x 210 mm | 357 x 60 x 210 mm |
| Product Colour | White | Black |
| Weight | 0.30 kg | 0.30 kg |

COMMON SPECIFICATIONS

| | | | |
|---------------------------|----------------------|-------------------------------|---------------------------|
| Body Material | ABS | Power Factor | > 0.3 |
| Diffuser Material | Polycarbonate (Opal) | Projected Lifespan | > 36,000hrs @Ta55°C (L70) |
| IP Rating | IP20 | Operating Ambient Temperature | 0 to 45°C |
| CRI | > 70 | AS/NZS Standard | 60598 / 2293.3 |
| Viewing Distance | 24 m | Emergency Type | Maintained |
| Warranty | 5yrs (1yr battery) | Charger Operation | Continuous |
| Driver | Integral | | |
| Power Connection | PA12 Terminals | | |
| Input Voltage | 220-240Vac, 50/60Hz | | |
| Electrical Classification | Class II | | |

APPLICATIONS

Kitchen / Food Prep
 Laundry
 Hallways
 Entrance
 Theatre Rooms
 Showrooms
 Offices
 Function Areas
 Retail Spaces
 Hotel Common Areas
 Restaurants / Cafés
 Storage Facilities
 Manufacturing Facilities
 Carpark

ACCESSORIES

Emergency Exit Sign Pictograms (supplied with product)



Replaceable Pictogram Set

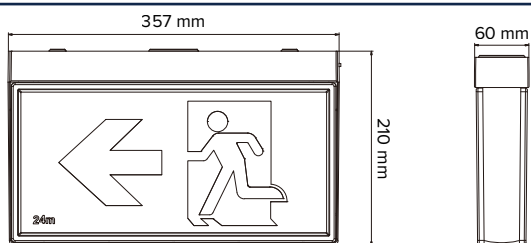


Replaceable Pictogram Set



Replaceable Pictogram Set

DIMENSIONS



ESD24M-BOX/ ESD24M-BOX-BK

Find out more



Simple and quick maintenance check

Single test button

Provides quick and easy installation

Integrated driver with cable and plug

Robust housing to withstand damage

IP65 and IK10 rating

Blend fitting into the existing environment seamlessly

Choice of colour finishes

The correct sign for every application

Selection of pictograms included



IP65

ESODO^{IP65}

Robust vandal and weatherproof construction.

ESODO IP65 is a robust, double sided, vandal resistant LED emergency EXIT sign built for harsh environments. Even though ESODO IP65 has been designed to last, no compromise has been made with regards to maintenance and user friendliness.



PRODUCT RANGE



| Product Code | ESD24M-IP65 | ESD24M-IP65-BK |
|--------------------------|----------------------|----------------------|
| SAP Code | 2002085 | 2002174 |
| Power | 4 W | 4 W |
| Lumen Output | 35 lm | 35 lm |
| CCT | 6500 K | 6500 K |
| Power (Charging) | 4.5 W | 4.5 W |
| Power (Standby) | 1.5 W | 1.5 W |
| Battery Size | 1.5 Ah | 1.5 Ah |
| Test Type | Manual Test | Manual Test |
| Battery Type | LiFePo4 3.2V | LiFePo4 3.2V |
| Recharge Time | 16 hrs | 16 hrs |
| Discharge Time | 1.5 hrs | 1.5 hrs |
| Emergency Classification | C0: E6.3 / C90: E6.3 | C0: E6.3 / C90: E6.3 |
| Beam Angle | 120° | 120° |
| Dimensions | 365 x 130 x 210 mm | 365 x 130 x 210 mm |
| Product Colour | White | Black |
| Weight | 1.70 kg | 1.70 kg |

COMMON SPECIFICATIONS

| | | | |
|-------------------|----------------------|-------------------------------|---------------------------|
| Body Material | Polycarbonate / PMMA | Electrical Classification | Class II |
| Diffuser Material | PMMA | Projected Lifespan | > 54,000hrs @Ta55°C (L70) |
| IP Rating | IP65 | Operating Ambient Temperature | 0 to 40°C |
| IK Rating | IK10 | AS/NZS Standard | 60598 / 2293.3 |
| CRI | > 80 | Emergency Type | Maintained |
| Viewing Distance | 24 m | Charger Operation | Continuous |
| Warranty | 5yrs (1yr battery) | | |
| Driver | Integral | | |
| Power Lead | 1m Flex & Plug | | |
| Input Voltage | 220-240Vac, 50/60Hz | | |

APPLICATIONS

Kitchens
 Laundry
 Butler Pantry
 Hallways
 Entrance
 Bathrooms
 Theatre Rooms
 Showroom
 Offices
 Boardroom/ Meeting Rooms
 Function Areas
 Education Facilities
 Foor Courts
 Retail Spaces
 Hotel Common Areas
 Restaurants / Cafés
 Cocktail Lounge
 Store Rooms
 Warehouse
 Storage Facilities
 Hangers
 Workshops
 Manufacturing Facilities
 Indoor Recreation
 Staircase
 Carpark

ACCESSORIES

Emergency Exit Sign Pictograms (supplied with product)



Replaceable Pictogram Set

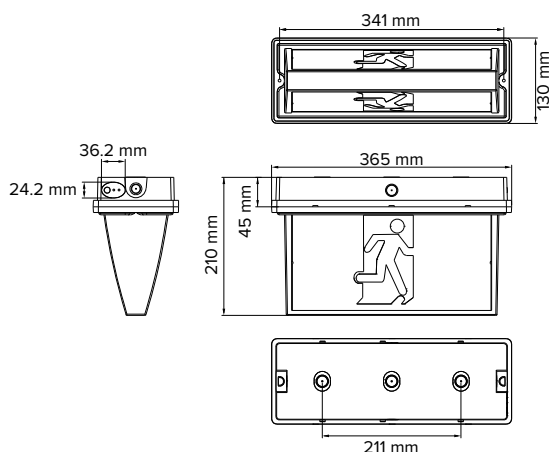


Replaceable Pictogram Set



Replaceable Pictogram Set

DIMENSIONS



ESD24M-IP65 / ESD24M-IP65-BK

Find out more





The correct sign for every application

Selection of pictograms included

Blend fitting into the existing environment seamlessly

Choice of colour finishes

Expand the lighting possibilities with different mounting configuration

Versatile mounting options

Ensure safety throughout the building

24m viewing distance

Suitable for high end architectural environments

Slim profile design

ESODO^{EDGE}

Architectural slimline design.

ESODO EDGE is a super slim, double sided LED emergency exit sign for multiple surface mounting options. With its blade style and slick edge-lit design ESODO EDGE will also provide safety in high end architectural applications.



Ingress Protection Rating



Battery Reliability



Australian Standard Compliance



5yr
1yr Battery

PRODUCT RANGE



| Product Code | ESD24M-SM | ESD24M-SM-BK |
|--------------------------|----------------------|----------------------|
| SAP Code | 2002084 | 2002173 |
| Power | 4 W | 4 W |
| Lumen Output | 35 lm | 35 lm |
| CCT | 6500 K | 6500 K |
| Power (Charging) | 4.5 W | 4.5 W |
| Power (Standby) | 1.5 W | 1.5 W |
| Battery Size | 1.5 Ah | 1.5 Ah |
| Test Type | Manual Test | Manual Test |
| Battery Type | LiFePO4 3.2V | LiFePO4 3.2V |
| Recharge Time | 16 hrs | 16 hrs |
| Discharge Time | 1.5 hrs | 1.5 hrs |
| Emergency Classification | C0: E6.3 / C90: E6.3 | C0: E6.3 / C90: E6.3 |
| Beam Angle | 125° | 125° |
| Dimensions | 327 x 70 x 255 mm | 327 x 70 x 255 mm |
| Product Colour | White | Black |

COMMON SPECIFICATIONS

| | | | |
|---------------------------|----------------------|--------------------------------|---------------------------|
| Body Material | Polycarbonate / PMMA | Projected Lifespan | > 50,000hrs @Ta25°C (L70) |
| Diffuser Material | Acrylic | Operating Ambient Temperature: | 0 to 40°C |
| IP Rating | IP20 | AS/NZS Standard | 60598 / 2293.3 |
| Viewing Distance | 24 m | Emergency Type | Maintained |
| Warranty | 5yrs (1yr battery) | Charger Operation | Continuous |
| Driver | Integrated | | |
| Power Connection | PA12 Terminals | | |
| Input Voltage | 220-240Vac, 50/60Hz | | |
| Electrical Classification | Class II | | |

APPLICATIONS

Kitchen / Food Prep
Laundry
Hallways
Entrance
Theatre Rooms
Showrooms
Offices
Function Areas
Foor Courts
Retail Spaces
Restaurants / Café's
Storage Facilities
Manufacturing Facilities
Carpark
Hotel Common Areas

ACCESSORIES

Mounting Supports



Side Mount Bracket
ESD-SIDE
(SAP 2002179)



Suspension Kit
ESD-SUSKIT
(SAP 2002180)



Suspension Kit
ESD-POLE-06
(SAP 2002181)



White Mounting Plate
ESD-POLE-WH
(SAP 2002209)



Black Mounting Plate
ESD-POLE-BK
(SAP 2002210)

Emergency Exit Sign Pictograms (supplied with product)



Replaceable Pictogram Set
ESD-STRAIGHT
(SAP 2002195)

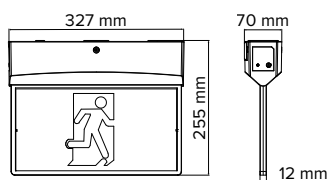


Replaceable Pictogram Set
ESD-LEFT
(SAP 2002196)



Replaceable Pictogram Set
ESD-RIGHT
(SAP 2002197)

DIMENSIONS



ESD24M-SM / ESD24M-SM-BK

Find out more





The correct sign for every application

Selection of pictograms included

Blend fitting into the existing environment seamlessly

Choice of colour finishes

Expand the lighting possibilities with different mounting configuration

Versatile mounting options

Ensure safety throughout the building

24m viewing distance

Suitable for high end architectural environments

Slim profile design

EDGE RECESSED

ESODO^{EDGE} Recessed

Recessed slimline design.

ESODO EDGE (recessed) is a super slim, double sided LED emergency EXIT sign for a streamlined hidden recessed installation. With its blade style and slick edge-lit design ESODO EDGE will also provide safety in high end architectural applications.



IP20
Ingress Protection Rating



LiFePO₄
Battery Reliability



RCM
Australian Standard Compliance



5yr
1yr Battery

PRODUCT RANGE



| Product Code | ESD24M-RC | ESD24M-RC-BK |
|--------------------------|----------------------|----------------------|
| SAP Code | 2002083 | 2002172 |
| Power | 4 W | 4 W |
| Lumen Output | 35 lm | 35 lm |
| CCT | 6500 K | 6500 K |
| Power (Charging) | 4.5 W | 4.5 W |
| Power (Standby) | 1.5 W | 1.5 W |
| Battery Size | 1.5 Ah | 1.5 Ah |
| Test Type | Manual Test | Manual Test |
| Battery Type | LiFePO4 3.2V | LiFePO4 3.2V |
| Recharge Time | 16 hrs | 16 hrs |
| Discharge Time | 1.5 hrs | 1.5 hrs |
| Emergency Classification | C0: E6.3 / C90: E6.3 | C0: E6.3 / C90: E6.3 |
| Beam Angle | 125° | 125° |
| Cutout Size | 320 x 72 mm | 320 x 72 mm |
| Dimensions | 365 x 84 x 222mm | 365 x 84 x 222mm |
| Product Colour | White | Black |

COMMON SPECIFICATIONS

| | |
|-------------------|----------------------|
| Body Material | Polycarbonate / PMMA |
| Diffuser Material | Acrylic |
| IP Rating | IP20 |
| CRI | > 80 |
| SDCM | < 5 |
| Viewing Distance | 24 m |
| Warranty | 5yrs (1yr battery) |
| Driver | Integral |
| Power Lead | 1m Flex & Plug |
| Input Voltage | 220-240Vac, 50/60Hz |

| | |
|--------------------------------|---------------------------|
| Electrical Classification | Class II |
| Projected Lifespan | > 50,000hrs @Ta25°C (L70) |
| Operating Ambient Temperature: | 0 to 40°C |
| AS/NZS Standard | 60598 / 2293.3 |
| Emergency Type | Maintained |
| Charger Operation | Continuous |

APPLICATIONS

Kitchen / Food Prep
 Laundry
 Hallways
 Entrance
 Theatre Rooms
 Showrooms
 Offices
 Function Areas
 Floor Courts
 Retail Spaces
 Storage Facilities
 Manufacturing Facilities
 Carpark

ACCESSORIES

Emergency Exit Sign Pictograms (supplied with product)



Replaceable Pictogram Set
ESD-STRAIGHT
 (SAP 2002195)



Replaceable Pictogram Set
ESD-LEFT
 (SAP 2002196)



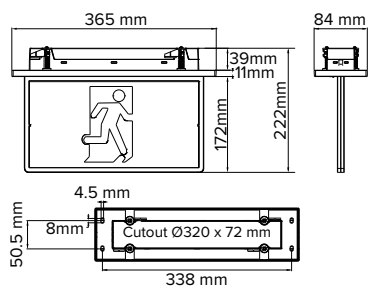
Replaceable Pictogram Set
ESD-RIGHT
 (SAP 2002197)

Trim Adaptors



Adaptor Plate
ESD24M-RC-ADP
 (SAP 2002300)

DIMENSIONS



ESD24M-RC / ESD24M-RC-BK

Find out more





Aids in improving the installation process

Easy terminal block access

The correct sign for every application

Selection of pictograms included

Complies to AS2293.3 emergency standard

LiFePo4 battery

Ensure safety throughout the building

Large 40m viewing distance

Suitable for high end architectural environments

Slim profile design

ESODO EDGE 40m

Extra large architectural slimline.

ESODO EDGE 40M is a super slim yet extra large LED emergency EXIT sign for surface mount installation. With its blade style and slick edge-lit design, it provides safety in large scale high-end architectural applications, where 24m viewing distance isn't enough.



PRODUCT RANGE



| | |
|--------------------------|--------------------|
| Product Code | ESD40M-SM |
| SAP Code | 2002192 |
| Power | 7 W |
| Lumen Output | 120 lm |
| CCT | 5700 K |
| Power (Charging) | 7 W |
| Power (Standby) | 4 W |
| Battery Size | 3.3 Ah |
| Test Type | Manual Test |
| Battery Type | LiFePO4 3.2V |
| Recharge Time | 16 hrs |
| Discharge Time | 2 hrs |
| Emergency Classification | C0: C32 / C90: C32 |
| Beam Angle | 55° |
| Dimensions | 555 x 50 x 372 mm |
| Product Colour | White |

COMMON SPECIFICATIONS

| | | | |
|---------------------------|----------------------|--------------------------------|---------------------------|
| Body Material | Polycarbonate / PMMA | Projected Lifespan | > 50,000hrs @Ta25°C (L70) |
| Diffuser Material | Acrylic | Operating Ambient Temperature: | 0 to 40°C |
| IP Rating | IP20 | AS/NZS Standard | 60598 / 2293.3 |
| Viewing Distance | 40 m | Emergency Type | Maintained |
| Warranty | 5yrs (1yr battery) | Charger Operation | Continuous |
| Driver | Integral | | |
| Power Connection | PA12 Terminals | | |
| Input Voltage | 220-240Vac, 50/60Hz | | |
| Electrical Classification | Class II | | |

APPLICATIONS

Entrance
Function Areas
Warehouse
Storage Facilities
Hangers
Carpark
Indoor Recreation
Theatre Rooms
Manufacturing Facilities

ACCESSORIES

Emergency Exit Sign Pictograms (supplied with product)



Replaceable Pictogram Set

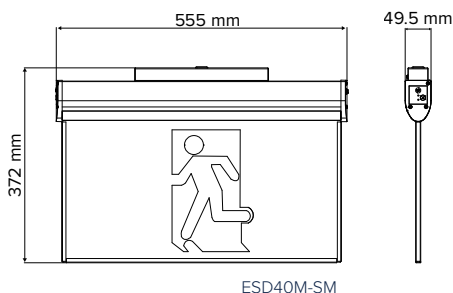


Replaceable Pictogram Set



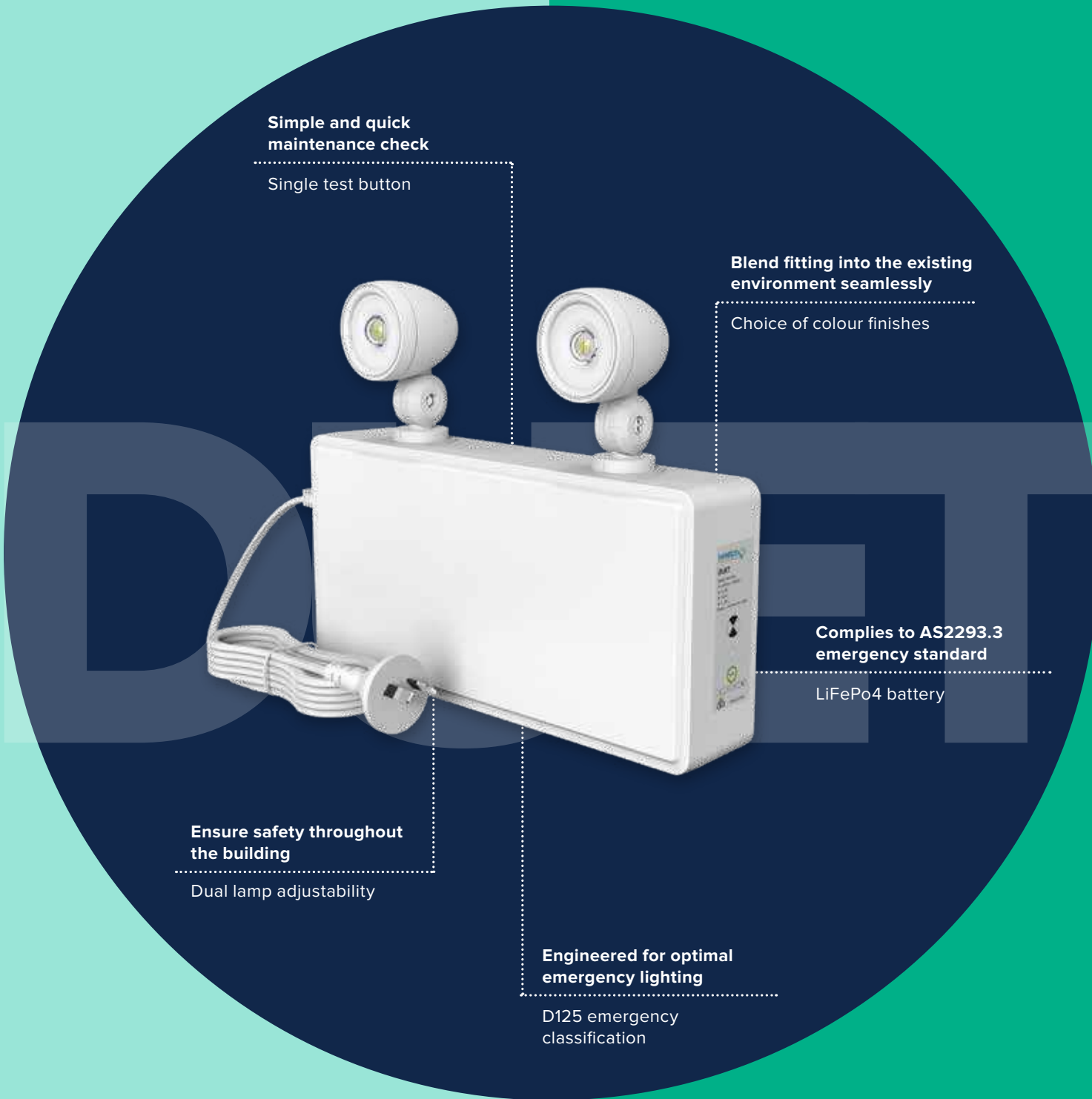
Replaceable Pictogram Set

DIMENSIONS



Find out more





Simple and quick maintenance check

Single test button

Blend fitting into the existing environment seamlessly

Choice of colour finishes

Complies to AS2293.3 emergency standard

LiFePO4 battery

Ensure safety throughout the building

Dual lamp adjustability

Engineered for optimal emergency lighting

D125 emergency classification

DUET

Dual directional for egress pathways.

DUET dual lamp flood light provides illumination for both large and small areas that need to be flooded with light during an emergency. DUET provides brilliant illumination that enables building occupants to easily find their way to safety under any circumstance – facilitating the evacuation of the building in the event of an emergency.



PRODUCT RANGE



| Product Code | DUET4W | DUET4W-BK |
|--------------------------|----------------------|----------------------|
| SAP Code | 2002087 | 2002175 |
| Power | 4 W | 4 W |
| Lumen Output | 2 x 250 lm | 2 x 250 lm |
| CCT | 5700 K | 5700 K |
| Power (Charging) | 4.5 W | 4.5 W |
| Power (Standby) | 0.56 W | 0.56 W |
| Battery Size | 6.6 Ah | 6.6 Ah |
| Test Type | Manual Test | Manual Test |
| Battery Type | LiFePO4 3.2V | LiFePO4 3.2V |
| Recharge Time | 16 hrs | 16 hrs |
| Discharge Time | 1.5 hrs | 1.5 hrs |
| Beam Angle | 150° | 150° |
| Emergency Classification | C0: D125 / C90: D125 | C0: D125 / C90: D125 |
| Dimensions | 282 x 56 x 225 mm | 282 x 56 x 225 mm |
| Product Colour | White | Black |

COMMON SPECIFICATIONS

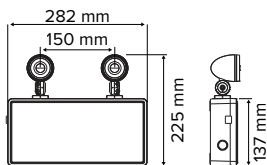
| | |
|-------------------|-----------------------|
| Body Material | Polycarbonate |
| Diffuser Material | Polycarbonate (Clear) |
| IP Rating | IP20 |
| Beam Angle | 150° |
| CRI | > 85 |
| SDCM | < 3 |
| Warranty | 5yrs (1yr battery) |
| Driver | Integrated |
| Power Lead | 1.2m Flex & Plug |
| Input Voltage | 220-240Vac, 50/60Hz |

| | |
|--------------------------------|---------------------------|
| Electrical Classification | Class II |
| Test Type | > 60,000hrs @Ta55°C (L70) |
| Operating Ambient Temperature: | 0 to 45°C |
| AS/NZS Standard | 60598 |
| Emergency Type | Non-Maintained |
| Charger Operation | Continuous |

APPLICATIONS

Kitchen / Food Prep
 Laundry
 Hallways
 Entrance
 Theatre Rooms
 Foor Courts
 Storage Facilities
 Manufacturing Facilities
 Indoor Recreation
 Staircase
 Temporary Installations
 General Industrial
 Carpark
 Warehouse
 Restaurant / Cafés

DIMENSIONS



DUET4W / DUET4W-BK

Find out more



Accessories

MOUNTING SUPPORTS



| | |
|-----------------|---------------------------|
| Product Code | ESD-SIDE |
| SAP Code | 2002179 |
| Type | ESODO Side Mount Bracket |
| Compatible With | ESD24M-SM ESD24M-SM-BK |



| | |
|-----------------|---------------------------|
| Product Code | ESD-SUSKIT |
| SAP Code | 2002180 |
| Type | ESODO Suspension Kit |
| Compatible With | ESD24M-SM ESD24M-SM-BK |



| | |
|-----------------|--|
| Product Code | ESD-POLE-06 |
| SAP Code | 2002181 |
| Type | ESODO 600mm Metal Pole for Pole Mount Bracket |
| Compatible With | ESD24M-SM ESD24M-SM-BK |



| | |
|-----------------|--|
| Product Code | ESD-POLE-WH |
| SAP Code | 2002209 |
| Type | ESODO White Mounting Plate for Pole Mount |
| Compatible With | ESD24M-SM ESD24M-SM-BK |



| | |
|-----------------|--|
| Product Code | ESD-POLE-BK |
| SAP Code | 2002210 |
| Type | ESODO Black Mounting Plate for Pole Mount |
| Compatible With | ESD24M-SM ESD24M-SM-BK |



| | |
|-----------------|---------------------------------|
| Product Code | SM-ENC-SUSKIT* |
| SAP Code | 2001871 |
| Type | Suspension Kit |
| Compatible With | LUME3WD63-SM LUME3WD63-SM-BK |

EMERGENCY EXIT SIGN PICTOGRAMS



| | |
|------------------------|---|
| Product Code | ESD-STRAIGHT |
| SAP Code | 2002195 |
| Type | Replaceable Pictogram Set (24 m) |
| Compatible With | ESODO ^{EDGE} (all models) ESODO ^{EDGE recessed} (all models) |



| | |
|------------------------|---|
| Product Code | ESD-LEFT |
| SAP Code | 2002196 |
| Type | Replaceable Pictogram Set (24 m) |
| Compatible With | ESODO ^{EDGE} (all models) ESODO ^{EDGE recessed} (all models) |



| | |
|------------------------|---|
| Product Code | ESD-RIGHT |
| SAP Code | 2002197 |
| Type | Replaceable Pictogram Set (24 m) |
| Compatible With | ESODO ^{EDGE} (all models) ESODO ^{EDGE recessed} (all models) |

TRIM ADAPTORS



| | |
|------------------------|---|
| Product Code | ESD24M-RC-ADP |
| SAP Code | 2002300 |
| Type | Haneco ESODO EDGE Recessed Exit 24m Viewing Adaptor plate |
| Compatible With | ESODO ^{EDGE recessed} (all models) |

Emergency Range

VISTA^{EM}

Simple, efficient and flexible

| PRODUCT CODE | SAP | WATT | EMERGENCY CLASSIFICATION | LENGTH |
|----------------------|---------|-----------|--------------------------|---------|
| VISTA20W06-TRI-EM | 2001158 | 20 W | C0: D50 / C90: D32 | 615 mm |
| VISTA20/40W12-TRI-EM | 2001063 | 20 / 40 W | C0: D63 / C90: D40 | 1221 mm |
| VISTA40W12-TRI-SS-EM | 2001065 | 40 W | C0: D50 / C90: D32 | 1221 mm |
| VISTA60W15-TRI-EM | 2001163 | 60 W | C0: D50 / C90: D32 | 1523 mm |
| VISTA12-EMDD | 2002255 | 40 W | C0: D63 / C90: D40 | 1221 mm |

VISTA^{HERO} EM

Conventional and elegant

| PRODUCT CODE | SAP | WATT | EMERGENCY CLASSIFICATION | LENGTH |
|------------------|---------|-----------|--------------------------|---------|
| VISTA-HR12-EM | 2001941 | 20 / 40 W | C0: D63 / C90: D40 | 1165 mm |
| VISTA-HR12-EM-MS | 2001943 | 20 / 40 W | C0: D63 / C90: D40 | 1165 mm |

VISTA^{EVO} EM

Well rounded LED batten

| PRODUCT CODE | SAP | WATT | EMERGENCY CLASSIFICATION | LENGTH |
|---------------------|----------|-----------|--------------------------|---------|
| VISTA-EV06-EM | 2002347 | 20 W | C0: D63 / C90: D40 | 600 mm |
| VISTA-EV06-EM-BK | 2002353 | 20 W | C0: D63 / C90: D40 | 600 mm |
| VISTA-EV12-EM | 2002349 | 20 / 40 W | C0: D63 / C90: D40 | 1205 mm |
| VISTA-EV12-EM-BK | 2002355 | 20 / 40 W | C0: D63 / C90: D40 | 1205 mm |
| VISTA-EV12-EM-MS | 20002351 | 20 / 40 W | C0: D63 / C90: D40 | 1205 mm |
| VISTA-EV12-EM-MS-BK | 2002357 | 20 / 40 W | C0: D63 / C90: D40 | 1205 mm |

OXFORD^{EM}

Aesthetically pleasing, wide-body batten

| PRODUCT CODE | SAP | WATT | EMERGENCY CLASSIFICATION | LENGTH |
|----------------|---------|---------------------|--------------------------|---------|
| OXFORD12-EM | 2001886 | 20 / 29 / 32 / 40 W | C0: D63 / C90: D40 | 1165 mm |
| OXFORD12-EM-MS | 2001888 | 40 W | C0: D63 / C90: D40 | 1165 mm |

DURA^{EM}

Robust construction for harsh environments

| PRODUCT CODE | SAP | WATT | EMERGENCY CLASSIFICATION | LENGTH |
|---------------|---------|---------------------|--------------------------|---------|
| DURA-06-EM | 2002139 | 10 / 13 / 15 / 18 W | C0: D80 / C90: D50 | 655 mm |
| DURA-06-EM-MS | 2002141 | 10 / 13 / 15 / 18 W | C0: D80 / C90: D50 | 655 mm |
| DURA-12-EM | 2002143 | 18 / 25 / 30 / 36 W | C0: D100 / C90: D63 | 1220 mm |
| DURA-12-EM-MS | 2002145 | 18 / 25 / 30 / 36 W | C0: D100 / C90: D63 | 1220 mm |

DURA^{FOREMAN EM}

Temporary weatherproof solution

| PRODUCT CODE | SAP | WATT | EMERGENCY CLASSIFICATION | LENGTH |
|-----------------|---------|------|--------------------------|---------|
| DURA-12-FRMN-EM | 2002544 | 36 W | C0: D40 / C90: D16 | 1220 mm |

TRIPROOF^{G2 EM}

Tried and trusted design

| PRODUCT CODE | SAP | WATT | EMERGENCY CLASSIFICATION | LENGTH |
|------------------|---------|---------------------|--------------------------|---------|
| TRIPROOF06-EM | 2002551 | 10 / 13 / 17 / 20 W | C0: D63 / C90: D40 | 660 mm |
| TRIPROOF12-EM | 2002554 | 20 / 40 W | C0: D63 / C90: D32 | 1220 mm |
| TRIPROOF12-MS-EM | 2002555 | 18 / 24 / 32 / 38 W | C0: D63 / C90: D32 | 1220 mm |

DISCUS^{EM}

Super slim profile

| PRODUCT CODE | SAP | WATT | EMERGENCY CLASSIFICATION | DIAMETER |
|----------------|---------|------|--------------------------|----------|
| DISC25W300R-EM | 2001936 | 25 W | C0: D40 / C90: D40 | Ø300 mm |
| DISC25W-EM-MS | 2001938 | 25 W | C0: D40 / C90: D40 | Ø400 mm |

PURO^{G4 EM}

General purpose oyster lighting

| PRODUCT CODE | SAP | WATT | EMERGENCY CLASSIFICATION | DIAMETER |
|----------------|---------|------|--------------------------|----------|
| PURO25W400R-EM | 2001989 | 25 W | C0: D32 / C90: D32 | Ø400 mm |
| PURO25W-EM-MS | 2001991 | 25 W | C0: D32 / C90: D32 | Ø400 mm |

Emergency Range

DAWN^{EM}

Contemporary and versatile

| PRODUCT CODE | SAP | WATT | EMERGENCY CLASSIFICATION | DIAMETER |
|--------------------|---------|------|--------------------------|----------|
| DN20WRND-TRI-EM | 2001911 | 20 W | C0: D25 / C90: D25 | Ø275 mm |
| DN20WRND-TRI-MS-EM | 2001912 | 20 W | C0: D25 / C90: D25 | Ø275 mm |
| DN30WRND-TRI-EM | 2001914 | 30 W | C0: D25 / C90: D25 | Ø350 mm |
| DN30WRND-TRI-MS-EM | 2001915 | 30 W | C0: D25 / C90: D25 | Ø350 mm |

DAWN^{HERO EM}

Sleek, beautiful and tough

| PRODUCT CODE | SAP | WATT | EMERGENCY CLASSIFICATION | DIAMETER |
|---------------|---------|-----------|--------------------------|----------|
| DN13WHR-EM | 2002289 | 11 / 15 W | C0: D32 / C90: D32 | Ø300 mm |
| DN13WHR-MS-EM | 2002290 | 12 / 16 W | C0: D32 / C90: D32 | Ø300 mm |

