

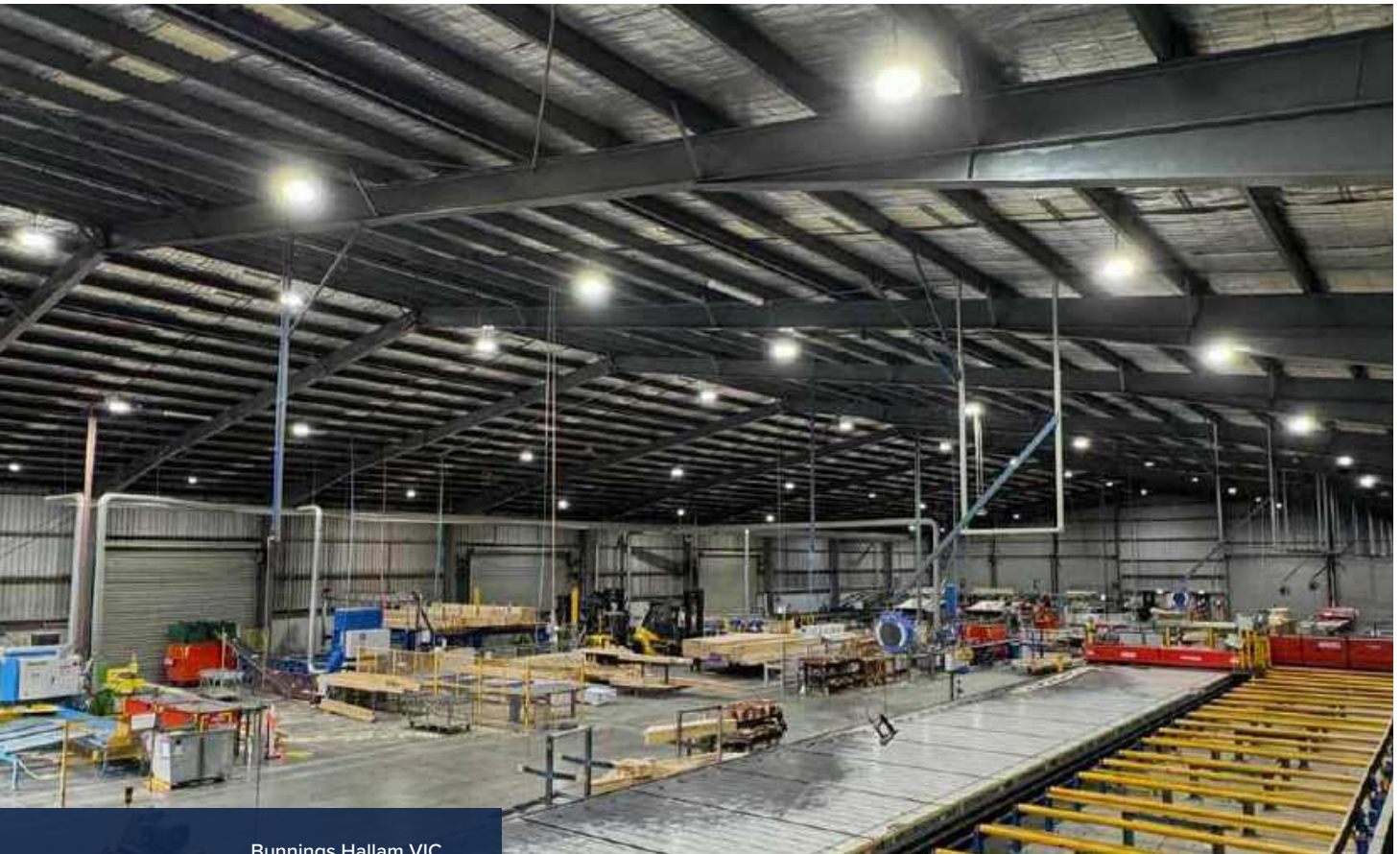


HIGHBAYS AND LOWBAYS



SKYLUX ^{G5}	140
SKYLUX ^{EVO}	142
SKYPAD ^{G2}	144
ARIS	146
BENZINA ^{G2}	148
ACCESSORIES	150

Port Adelaide Football Club SA



Bunnings Hallam VIC



Samsung Warehouse - Berrinba QLD

SKYLUX

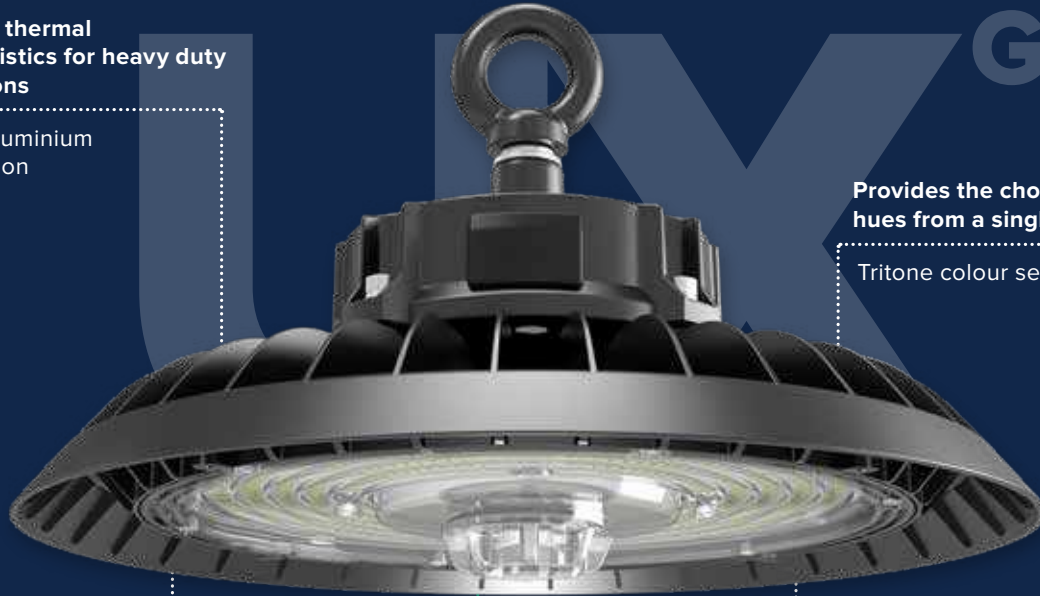
Improved thermal characteristics for heavy duty applications

Diecast aluminium construction

G5

Provides the choice of light hues from a single luminaire

Tritone colour selectable



Increase productivity and lowers eye strain

Flicker-free driver

Premium performance for premium applications

Engineered and optimised optical lens

High efficacy rating to promote energy saving

Exceptional performance

SKYLUX^{G5}

State of the art highbay solution.

9-Highbays-in-1, the SKYLUX G5 is 3 power switchable and tritone selectable. Offering precision optics for improved performance and a tough aluminium housing with optimised heat dissipation, to ensure prolonged LED life.



TRITONE
Colour Selectable



3POWER
Switchable Modes



Flicker
Free



100,000hr
Projected Lifespan



5yr
Warranty



GREENSTAR
Suitable

PRODUCT RANGE



Product Code	SKYLUX120W-G5	SKYLUX200W-G5
SAP Code	2002421	2002422
Power	70 / 100 / 120 W	150 / 170 / 200 W
Lumen Output	70 W: 14,228 / 14,604 / 14,076 lm 100 W: 17,500 / 18,163 / 17,347 lm 120 W: 20,222 / 21,357 / 20,209 lm	150 W: 26,983 / 27,766 / 26,651 lm 170 W: 28,632 / 29,581 / 28,278 lm 200 W: 33,995 / 36,137 / 34,435 lm
Efficacy	70 W: 180 / 187 / 179 lm/W 100 W: 174 / 186 / 174 lm/W 120 W: 169 / 184 / 170 lm/W	150 W: 181 / 192 / 179 lm/W 170 W: 179 / 190 / 176 lm/W 200 W: 172 / 188 / 173 lm/W
CCT	4000 / 5000 / 5700 K	4000 / 5000 / 5700 K
Dimensions	Ø280 x 169 mm	Ø320 x 169 mm
Weight	1.80 kg	2.10 kg
Product Colour	Black	Black

COMMON SPECIFICATIONS

Body Material	Die Cast Aluminium	Input Voltage	100-277Vac, 50/60Hz
Diffuser Material	Polycarbonate (Clear)	Electrical Classification	Class I
IP Rating	IP65	Power Factor	> 0.9
IK Rating	IK08	Protection	Overload / Short Circuit
Beam Angle	120°	Projected Lifespan	> 100,000hrs @Ta50°C (L70)
CRI	> 80	Operating Ambient Temperature	-30 to 50°C
SDCM	< 5	Smart	KASTA Compatible
Driver	Integral	Dimming	0-10 V Dimmable
Flicker Free	Yes		
Power Lead	1.5m Rubber Flex & Plug		

APPLICATIONS

Warehouse
Storage Facilities
Cool Rooms
Manufacturing Facilities
General Industrial

ACCESSORIES

Lenses and Reflectors



60° Lens
SKYLUX120W-G5-60L
(SAP 2002434)
SKYLUX200W-G5-60L
(SAP 2002436)



90° Lens
SKYLUX120W-G5-90L
(SAP 2002435)
SKYLUX200W-G5-90L
(SAP 2002437)



Prismatic Reflector
SKYLUX120G4-PR
(SAP 2002277)
SKYLUX200G4-PR
(SAP 2002278)



Aluminium Reflector
SKYLUX200G4-RF
(SAP 2002309)

Sensors and Control



Motion Sensor
SKYLUX-G5/EV-MS
(SAP 2002438)



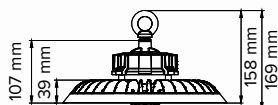
Sensor Remote Controller
HIGHBAY-REMOTE
(SAP 2002282)

Mounting Supports

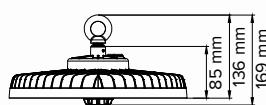


Surface Mount Bracket
SKYLUXG4-BRKT
(SAP 2002276)

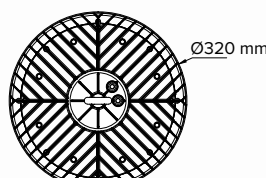
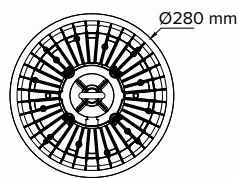
DIMENSIONS



SKYLUX120W-G5



SKYLUX200W-G5



Find out more



SKYLUX

EVO

Increase productivity and lowers eye strain

Flicker-free driver

Adjust the light to suit the requirements

Power switchable



Improved thermal characteristics for heavy duty applications

Diecast aluminium construction

High efficacy rating to promote energy saving

Exceptional performance

Provides quick and easy installation

Integrated driver with cable and plug

SKYLUX^{EVO}

Sleek and powerful.

SKYLUX EVO is a power switchable LED highbay, suitable for many commercial and industrial applications with high ceilings, and a need for high visibility and effective productivity.


POWER
Switchable Modes


DIM
0-10V Dimming


IP65
Ingress Protection Rating


120°
Beam Angle


54,000hr
Projected Lifespan


5yr
Warranty

PRODUCT RANGE



Product Code	SKYLUX150W-EV	SKYLUX200W-EV
SAP Code	2002419	2002420
Power	100 / 120 / 150 W	100 / 150 / 170 / 200 W
Lumen Output	100 W: 17,168 lm 120 W: 19,649 lm 150 W: 23,488 lm	100 W: 18,829 lm 150 W: 25,677 lm 170 W: 28,317 lm 200 W: 31,479 lm
Efficacy	100 W: 172 lm/W 120 W: 166 lm/W 150 W: 160 lm/W	100 W: 182 lm 150 W: 173 lm 170 W: 166 lm 200 W: 160 lm
CCT	5000 K	5000 K
Dimensions	Ø252 x 147 mm	Ø290 x 147 mm
Weight	1.50 kg	1.80 kg
Product Colour	Black	Black

COMMON SPECIFICATIONS

Body Material	Die Cast Aluminium	Input Voltage	190-268Vac, 50/60Hz
Diffuser Material	Polycarbonate (Clear)	Electrical Classification	Class I
IP Rating	IP65	Power Factor	> 0.9
IK Rating	IK08	Protection	Overload / Short Circuit
Beam Angle	120°	Projected Lifespan	> 54,000hrs @Ta25°C (L70)
CRI	> 70	Operating Ambient Temperature	-30 to 50°C
SDCM	< 5	Smart	KASTA Compatible
Driver	Integral	Dimming	0-10 V Dimmable
Flicker Free	Yes		
Power Lead	1.5m Rubber Flex & Plug		

APPLICATIONS

Warehouse
Storage Facilities
Cool Rooms
Manufacturing Facilities
General Industrial

ACCESSORIES

Sensors and Control



Motion Sensor
SKYLUX-G5/EV-MS
(SAP 2002438)



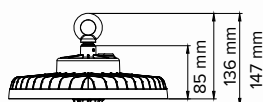
Sensor Remote Controller
HIGHBAY-REMOTE
(SAP 2002282)

Mounting Supports

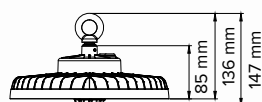


Surface Mount Bracket
SKYLUXG4-BRKT
(SAP 2002276)

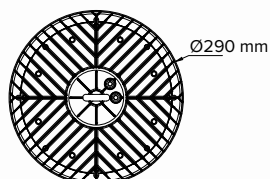
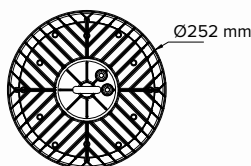
DIMENSIONS



SKYLUX150W-EV



SKYLUX200W-EV



Find out more



Suitable for large warehouse applications

High lumen output

Long lasting in hot environments

High ambient temperature rating (>60°C)

G2



Improved thermal characteristics for heavy duty applications

Diecast aluminium construction

Peace of mind with Haneco's longest product warranty

7 year warranty

Ideal for outdoor applications

IP65 and IK08 rating

SKYPAD^{G2}

Heavy duty.

SKYPAD G2 is a powerful lighting solution featuring high lumen output, IP65 ingress protection and high operating temperatures of up to 60°C. Coming with a flicker free 0-10V dimmable driver, as well as having a projected lifespan of more than 100,000 hours, plus a 7 year product warranty, reconfirm SKYPAD G2 as the top choice for any heavy duty applications, especially in warmer Australian climates.



IP65

Ingress Protection Rating



IK08

Impact Rating



48000lm

Lumens



>80

CRI Colour Rendering Index



Flicker Free



7yr

Warranty

PRODUCT RANGE



Product Code	SKYPAD300W-G2
SAP Code	2002369
Power	300 W
Lumen Output	48,000 lm
Efficacy	160 lm/W
CCT	5000 K
Dimensions	Ø390 x 179 mm
Weight	4.00 kg
Product Colour	Silver

COMMON SPECIFICATIONS

Body Material	Aluminium	Input Voltage	220-240V, 50/60Hz
Diffuser Material	Polycarbonate (Clear)	Electrical Classification	Class I
IP Rating	IP65	Power Factor	> 0.9
IK Rating	IK08	Protection	Overload / Short Circuit
Beam Angle	120°	Projected Lifespan	> 100,000hrs @Ta 50°C (L80)
Adjustable Angle	0-180°	Operating Ambient Temperature	-30 to 60°C
CRI	> 80	Smart	KASTA Compatible
SDCM	< 3	Dimming	0-10V Dimmable
Driver	Integral		
Flicker Free	Yes		
Power Lead	1.5m Flex & Plug		

APPLICATIONS

Cool Rooms
General Industrial
Manufacturing Facilities
Warehouse
Storage Facilities

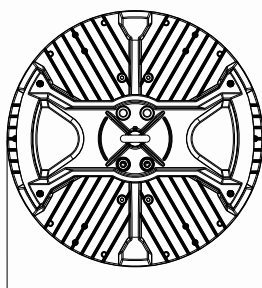
ACCESSORIES

Mounting Supports

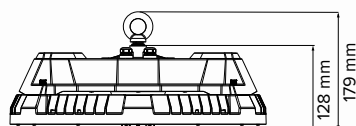


Surface Mount Bracket
SKYPADG2-BKT
(SAP 2002370)

DIMENSIONS



390 mm

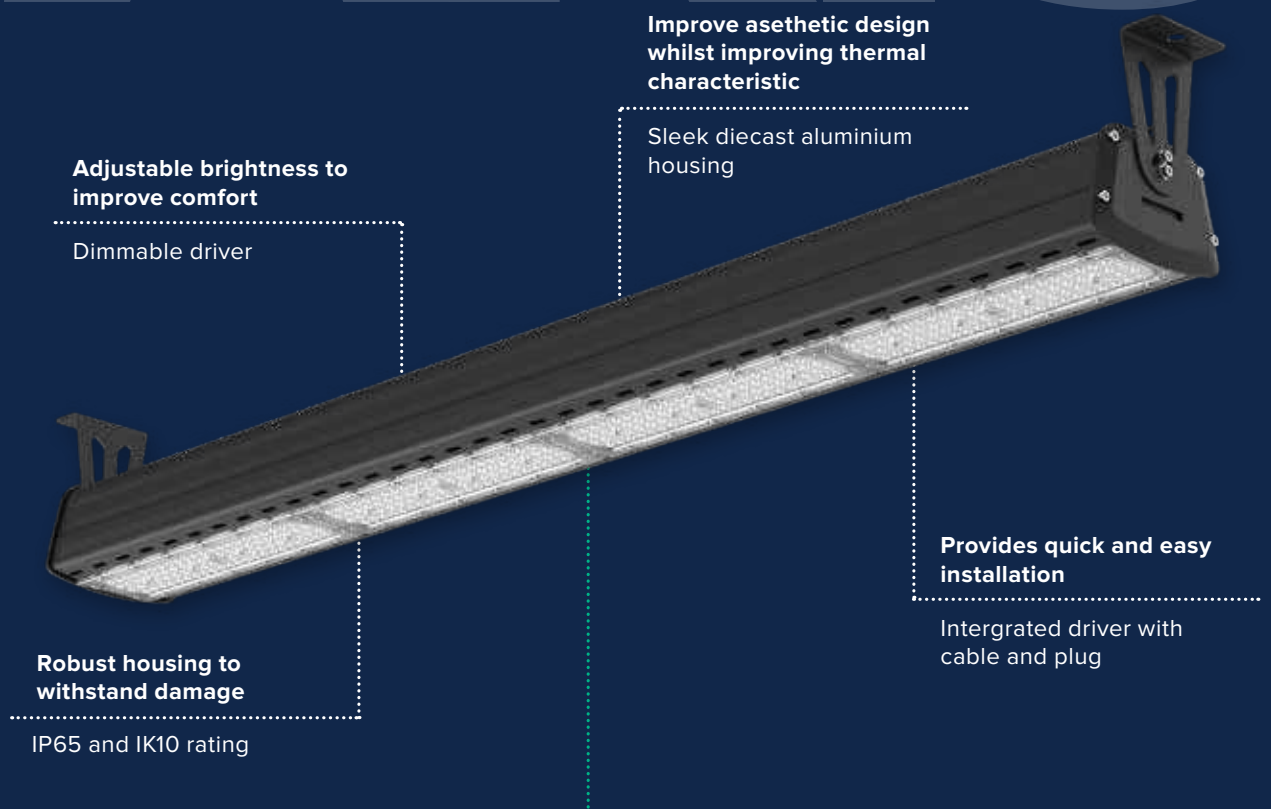


SKYPAD300W-G2

Find out more



ARIS



Adjustable brightness to improve comfort

Dimmable driver

Improve aesthetic design whilst improving thermal characteristic

Sleek diecast aluminium housing

Provides quick and easy installation

Integrated driver with cable and plug

Robust housing to withstand damage

IP65 and IK10 rating

Suitable for food manufacturing areas

HACCP approved

ARIS

Sleek and tough.

ARIS is a series of sleek and high performance linear LED highbays. Dedicated beam angles and flexible mounting options make it the perfect solution for wide or narrow aisle spaces.

IP65
Ingress Protection Rating

IK10
Impact Rating

HACCP
INTERNATIONAL
Food Safe

50,000hr
Projected Lifespan

5yr
Warranty

PRODUCT RANGE



Product Code	ARIS150W30x70	ARIS150W40x120	ARIS200W30x70	ARIS200W40x120
SAP Code	2002031	2002032	2002033	2002034
Power	150 W	150 W	200 W	200 W
Lumen Output	18,570 lm	18,580 lm	25,190 W	25,250 W
Efficacy	124 lm/W	125 lm/W	124 lm/W	124 lm/W
CCT	5000 K	5000 K	5000 K	5000 K
Dimensions	845 x 124 x 141 mm	845 x 124 x 141 mm	1099 x 124 x 141 mm	1099 x 124 x 141 mm
Beam Angle	30° x 70°	40° x 120°	30° x 70°	40° x 120°
Weight	3.50 kg	3.50 kg	4.10 kg	4.10 kg
Product Colour	Black	Black	Black	Black

COMMON SPECIFICATIONS

Body Material	Aluminium	Electrical Classification	Class I
Diffuser Material	PMMA (Acrylic)	Power Factor	> 0.9
IP Rating	IP65	Protection	Overload / Short Circuit
IK Rating	IK10	Projected Lifespan	> 50,000hrs @Ta25°C (L70)
Adjustable Angle	0-180°	Operating Ambient Temperature	-20 to 50°C
CRI	> 80	Smart	KASTA Compatible
SDCM	< 5	Dimming	0-10 V Dimmable
Driver	Integral		
Power Lead	1.2m Flex & Plug		
Input Voltage	220-240Vac, 50/60Hz		

APPLICATIONS

- Warehouse
- Storage Facilities
- Storage Rooms
- Indoor Recreation
- Kitchen / Food Prep

ACCESSORIES

Motion Sensors



Motion Sensor
ARIS-SENSOR
(SAP 2002035)



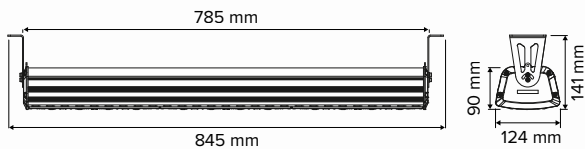
Sensor Remote Controller
SKYLUX-REMOTE
(SAP 2001902)

Mounting Supports

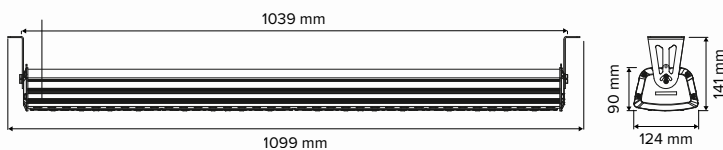


Suspension Kit
ARIS-SUSKIT
(SAP 2002068)

DIMENSIONS



ARIS150W30x70 / ARIS150W40x120



ARIS200W30x70 / ARIS200W40x120

Find out more



BENZINA

Adjustable brightness to improve comfort

Dimmable driver

Improved thermal characteristics for heavy duty applications

Diecast aluminium construction



Ideal for outdoor applications

IP65 and IK08 rating

Expand the lighting possibilities with different mounting configurations

Versatile mounting options

Retrofittable option to assist in energy usage or security lighting

Optional plug-in motion sensor

BENZINA^{G2}

Versatile and compact.

BENZINA G2 is the evolution of canopy lighting offering clean architectural lines and optimum performance. Versatile, due to power switchable 150W and 200W versions, the higher wattage can help reduce the number of products required on higher applications, bringing down the overall cost of the installation.



PRODUCT RANGE



Product Code	BENZINA150WG2	BENZINA200WG2
SAP Code	2002283	2002284
Power	75 / 100 / 120 / 148 W	100 / 148 / 165 / 196 W
Lumen Output	75 W: 12,017 lm 100 W: 15,386 lm 120 W: 18,055 lm 148 W: 21,641 lm	100W: 15,399 lm 148W: 22102 lm 165W: 24,291 lm 196W: 28,453 lm
Efficacy	75 W: 160 lm/W 100 W: 154 lm/W 120 W: 150 lm/W 148 W: 146 lm/W	100 W: 154 lm/W 148 W: 149 lm/W 165 W: 147 lm/W 196 W: 145 lm/W
CCT	5000 K	5000 K
Dimensions	380 x 380 x 50 mm	380 x 380 x 50 mm
Weight	4.80 kg	4.90 kg
Product Colour	White	White

COMMON SPECIFICATIONS

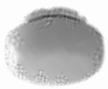
Body Material	Aluminium	Input Voltage	200-240Vac, 50/60Hz
Diffuser Material	Glass (Clear)	Electrical Classification	Class I
IP Rating	IP65	Power Factor	> 0.9
IK Rating	IK08	Protection	Overload / Short Circuit
Beam Angle	120°	Projected Lifespan	> 50,000hrs @Ta25°C (L70)
CRI	> 85	Operating Ambient Temperature	-30 to 45°C
SDCM	< 3	Smart	KASTA Compatible
Driver	Integral	Dimming	0-10 V Dimmable
Flicker Free	Yes		
Power Lead	1.5m Flex & Plug		

APPLICATIONS

- Warehouse
- Storage Factories
- Manufacturing Facilities
- Cool rooms
- Large Commercial Spaces

ACCESSORIES

Sensors and Control



Motion Sensor
HIGHBAY-MS
(SAP 2002281)



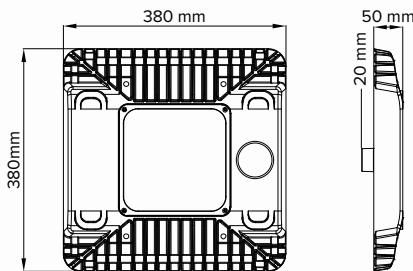
Sensor Remote Controller
HIGHBAY-REMOTE
(SAP 2002282)

Mounting Supports



Surface Mount Box
BENZINAG2-SBOX
(SAP 2002286)

DIMENSIONS



BENZINA150WG2 / BENZINA200WG2

Find out more



Accessories

LENSES AND REFLECTORS



Product Code	SKYLUX120W-G5-60L	SKYLUX200W-G5-60L
SAP Code	2002434	2002436
Type	60° Lens	60° Lens
Compatible With	SKYLUX120W-G5	SKYLUX200W-G5

Product Code	SKYLUX120W-G5-90L	SKYLUX200W-G5-90L
SAP Code	2002435	2002437
Type	90° Lens	90° Lens
Compatible With	SKYLUX120W-G5	SKYLUX200W-G5



Product Code	SKYLUX120G4-PR	SKYLUX200G4-PR	SKYLUX200G4-RF
SAP Code	2002277	2002278	2002309
Type	Prismatic Reflector	Prismatic Reflector	Aluminium Reflector
Compatible With	SKYLUX120W-G5	SKYLUX200W-G5	SKYLUX200W-G5

MOUNTING SUPPORTS



Product Code	SKYLUXG4-BRKT	SKYPADG2-BKT
SAP Code	2002276	2002370
Type	Surface Mount Bracket	Surface Mount Bracket
Compatible With	SKYLUX ^{GS} (all models) SKYLUX ^{EVO} (all models)	SKYPAD300W-G2



Product Code	ARIS-SUSKIT
SAP Code	2002068
Type	Suspension Kit
Compatible With	ARIS (all models)

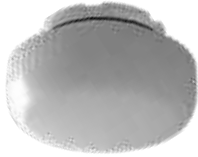


Product Code	BENZINAG2-SBOX
SAP Code	2002286
Type	Surface Mount Box
Compatible With	BENZINA ^{G2} (all models)

SENSORS AND CONTROL



Product Code	SKYLUX-G5/EV-MS
SAP Code	2002438
Type	Microwave Motion Sensor
Compatible With	SKYLUX ^{G5} (all models) SKYLUX ^{EV0} (all models)



Product Code	HIGHBAY-MS
SAP Code	2002281
Type	Microwave Motion Sensor
Compatible With	BENZINA ^{G2} (all models)



Product Code	HIGHBAY-REMOTE
SAP Code	2002282
Type	Sensor Remote Controller
Compatible With	SKYLUX ^{G5} (all models) SKYLUX ^{EV0} (all models) BENZINA ^{G2} (all models)



Product Code	SKYLUX-REMOTE
SAP Code	2001902
Type	Sensor Remote Controller
Compatible With	ARIS (all models)



Product Code	ARIS-SENSOR
SAP Code	2002035
Type	Daylight and Microwave Motion Sensor
Compatible With	ARIS (all models)