



INDOOR BATTENS



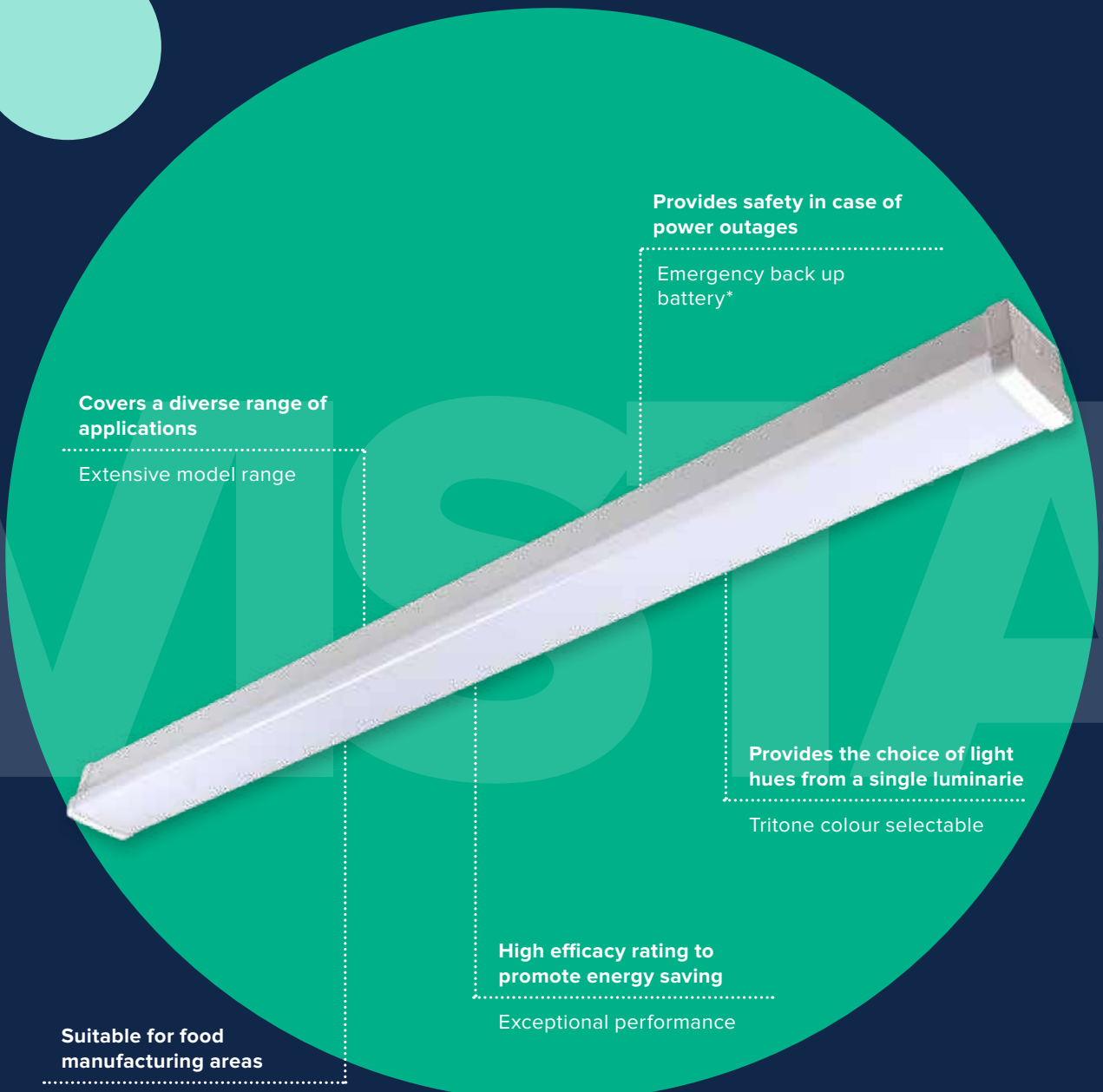
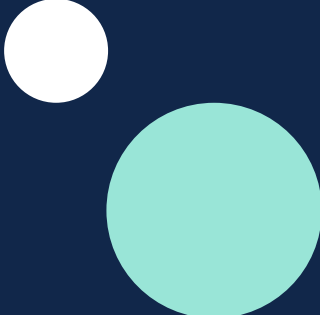
VISTA	96
VISTA ^{EVO}	100
VISTA ^{HERO}	104
VISTA ^{LINKABLE}	106
BLADE ^{G2}	108
OXFORD	110
UNO	112
ACCESSORIES	114



Corio Village Shopping Centre







Covers a diverse range of applications

Extensive model range

Provides safety in case of power outages

Emergency back up battery*

Provides the choice of light hues from a single luminaire

Tritone colour selectable

High efficacy rating to promote energy saving

Exceptional performance

Suitable for food manufacturing areas

HACCP approved

VISTA

Simple, efficient and flexible.

When it comes to batten lighting, VISTA is a familiar name that relates to excellence. VISTA is the universal batten lighting to suit both residential and business environments alike for any application whether it is home storage areas or commercial kitchens. The range is further strengthened with optional emergency and sensor models available.

*Model dependent



PRODUCT RANGE



Product Code	VISTA20W06-TRI	VISTA20W06-TRI-EM	VISTA20/40W12-TRI	VISTA20/40W12-TRI-EM
SAP Code	2001157	2001158	2001161	2001063
Power	20 W	20 W	20 / 40 W	20 / 40 W
Lumen Output	2000 / 2200 / 2100 lm	2000 / 2200 / 2100 lm	20 W: 2400 / 2510 / 2430 lm 40 W: 4540 / 4880 / 4470 lm	20 W: 2400 / 2510 / 2430 lm 40 W: 4540 / 4880 / 4470 lm
Efficacy	100 / 110 / 105 lm/W	100 / 110 / 105 lm/W	20 W: 120 / 126 / 122 lm/W 40 W: 114 / 122 / 112 m/W	20 W: 120 / 126 / 122 lm/W 40 W: 114 / 122 / 112 m/W
CCT	4000 / 4700 / 5700 K	4000 / 4700 / 5700 K	4000 / 4700 / 5700 K	4000 / 4700 / 5700 K
Dimensions	615 x 84 x 70 mm	615 x 84 x 70 mm	1221 x 84 x 70 mm	1221 x 84 x 70 mm
Weight	1.20 kg	1.50 kg	2.00 kg	2.20 kg
Product Colour	White	White	White	White
Model Variant	Standard	Emergency	Standard	Emergency
Operating Ambient Temperature	-30 to 50°C	0 to 50°C	-30 to 50°C	0 to 50°C
Dimmable	Non-Dimmable	Non-Dimmable	Non-Dimmable	Non-Dimmable



Product Code	VISTA12-SS	VISTA40W12-TRI-SS-EM	VISTA60W15-TRI	VISTA60W15-TRI-EM
SAP Code	2002232	2001065	20001162	2001163
Power	18 / 36 W	40 W	60 W	60 W
Lumen Output	18 W: 2160 / 2200 / 2160 lm 36 W: 4000 / 4200 / 4000 lm	5210 / 5630 / 5190 lm	6300 / 6690 / 6250 lm	6300 / 6690 / 6250 lm
Efficacy	18 W: 120 / 120 / 120 lm/W 36 W: 110 / 115 / 110 lm/W	122 / 138 / 119 lm/W	105 / 112 / 104 lm/W	105 / 112 / 104 lm/W
CCT	4000 / 4700 / 5700 K	4000 / 4700 / 5700 K	4000 / 4700 / 5700 K	4000 / 4700 / 5700 K
Dimensions	1221 x 84 x 70 mm	1221 x 84 x 70 mm	1523 x 84 x 70 mm	1523 x 84 x 70 mm
Weight	2.00 kg	2.70 kg	2.90 kg	3.00 kg
Product Colour	White	White	White	White
Model Variant	Intellisensor	Intellisensor + Emergency	Standard	Emergency
Operating Ambient Temperature	-30 to 50°C	0 to 50°C	-30 to 50°C	0 to 50°C
Dimmable	Non-Dimmable	Non-Dimmable	Non-Dimmable	Non-Dimmable

COMMON SPECIFICATIONS

Body Material	SPCC Steel
Diffuser Material	Polycarbonate (Opal)
IP Rating	IP20
Food Grade Approval	HACCP*
Beam Angle	125°
CRI	> 85
SDCM	< 3
Driver	Integral

Power Connection	PA14 Terminals
Input Voltage	220-240Vac, 50/60Hz
Electrical Classification	Class I
Power Factor	> 0.9
Protection	Overload / Short Circuit
Projected Lifespan	> 50,000hrs @Ta25°C (L70)
Smart	KASTA Compatible

APPLICATIONS

Kitchen / Food Prep
Garage
Offices
Education Facilities
Storage Rooms
Storage Facilities
Manufacturing Facilities
Indoor Recreation
Shed
General Industrial

Find out more



ACCESSORIES

Mounting Supports



600mm Wire Guard + Bracket
**VISTA20W06-WIRE GUARD
& Bracket**
(SAP 3000032)



1200mm Wire Guard + Bracket
**VISTA40W12-WIRE GUARD &
Bracket (BOM)**
(SAP 3000033)



1m Suspension Kit
TSSKIT-1M
(SAP 2000863)



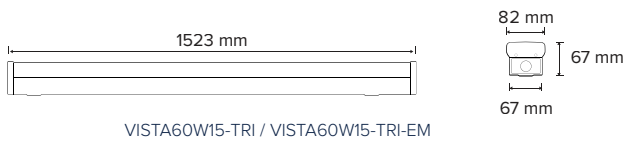
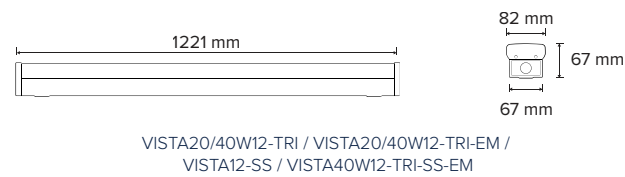
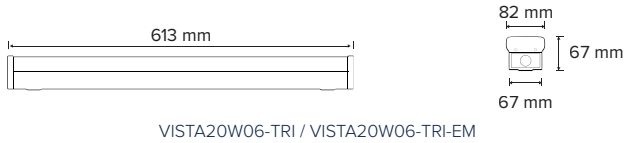
2m Suspension Kit
TSSKIT-2M
(SAP 2000864)

Emergency Battery



Emergency Battery
LI-BATTERY-BATTEN
(SAP 2001908)

DIMENSIONS

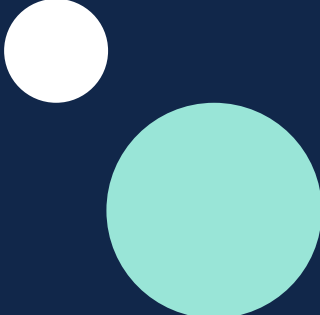


DIMMABLE MODELS

Product Code	VISTA40W12-TRI-DIM	VISTA40W12-TRI-10VDIM	VISTA12-DALI
SAP Code	2001866	7000075	2002254
Power	40 W	40 W	40 W
Dimming Type	Phase cut	1-10V	DALI
Description	HANECO VISTA LED batten 1200 mm 40W with phase cut driver	HANECO VISTA LED batten 1200 mm 40W with 1-10V driver	HANECO VISTA LED batten 1200 mm 40W with DALI driver

Product Code	VISTA12-EMDD
SAP Code	2002255
Power	40 W
Dimming Type	DALI
Description	HANECO VISTA LED batten 1200 mm 40W with DALI driver and DALI driver controlled emergency





Provides the choice of light hues from a single luminaire

Tritone colour selectable

Aids in improving the installation process

Easy terminal block access

Provides quick and easy installation

Simple 2 piece flip-open design

Adjust the light to suit the requirements

Power switchable*

Provides high end appearance

Modernised design

VISTA^{EVO}

Well rounded LED batten.

VISTA EVO is a sleek new concept on a traditional design. This well rounded batten may have a small footprint but packs all the features that is expected from a VISTA product. Available in black or white, 2ft or 4ft and optional emergency and motion sensors round out this simple yet reliable LED batten.

*Model dependent



4POWER
Switchable Modes



TRITONE
Colour Selectable



IP20
Ingress Protection Rating



Flicker Free



50,000hr
Projected Lifespan



5yr
Warranty

PRODUCT RANGE



Product Code	VISTA-EV06	VISTA-EV06-BK	VISTA-EV06-EM	VISTA-EV06-EM-BK
SAP Code	2002346	2002352	2002347	2002353
Power	10 / 13 / 17 / 20 W	10 / 13 / 17 / 20 W	20 W	20 W
Lumen Output	10 W: 1100 / 1150 / 1100 lm 13 W: 1430 / 1495 / 1430 lm 17 W: 1870 / 1955 / 1870 lm 20 W: 2200 / 2300 / 2200 lm	10 W: 1100 / 1150 / 1100 lm 13 W: 1430 / 1495 / 1430 lm 17 W: 1870 / 1955 / 1870 lm 20 W: 2200 / 2300 / 2200 lm	2200 / 2300 / 2200 lm	2200 / 2300 / 2200 lm
Efficacy	10 W: 110 / 115 / 110 lm/W 13 W: 110 / 115 / 110 lm/W 17 W: 110 / 115 / 110 lm/W 20 W: 110 / 121 / 110 lm/W	10 W: 110 / 115 / 110 lm/W 13 W: 110 / 115 / 110 lm/W 17 W: 110 / 115 / 110 lm/W 20 W: 110 / 121 / 110 lm/W	110 / 115 / 110 lm/W	110 / 115 / 110 lm/W
Dimensions	600 x 64 x 65 mm	600 x 64 x 65 mm	600 x 64 x 65 mm	600 x 64 x 65 mm
Weight	0.72 kg	0.72 kg	0.93 kg	0.93 kg
Product Colour	White	Black	White	Black
Model Variant	Standard	Standard	Emergency	Emergency
Operating Ambient Temperature	-20 to 45°C	-20 to 45°C	0 to 40°C	0 to 40°C



Product Code	VISTA-EV12	VISTA-EV12-BK	VISTA-EV12-EM	VISTA-EV12-EM-BK
SAP Code	2002348	2002354	2002349	2002355
Power	20 / 26 / 34 / 40 W	20 / 26 / 34 / 40 W	20 / 40 W	20 / 40 W
Lumen Output	20 W: 2200 / 2300 / 2200 lm 26 W: 2829 / 2957 / 2829 lm 34 W: 3771 / 3943 / 3771 lm 40 W: 4400 / 4600 / 4400 lm	20 W: 2200 / 2300 / 2200 lm 26 W: 2829 / 2957 / 2829 lm 34 W: 3771 / 3943 / 3771 lm 40 W: 4400 / 4600 / 4400 lm	20 W: 2200 / 2300 / 2200 lm 40 W: 4400 / 4600 / 4400 lm	20 W: 2200 / 2300 / 2200 lm 40 W: 4400 / 4600 / 4400 lm
Efficacy	20 W: 110 / 115 / 110 lm/W 26 W: 110 / 115 / 110 lm/W 34 W: 110 / 115 / 110 lm/W 40 W: 110 / 115 / 110 lm/W	20 W: 110 / 115 / 110 lm/W 26 W: 110 / 115 / 110 lm/W 34 W: 110 / 115 / 110 lm/W 40 W: 110 / 115 / 110 lm/W	20 W: 96 / 105 / 96 lm/W 40 W: 102 / 110 / 102 lm/W	20 W: 96 / 105 / 96 lm/W 40 W: 102 / 110 / 102 lm/W
Dimensions	1205 x 64 x 65 mm	1205 x 64 x 65 mm	1205 x 64 x 65 mm	1205 x 64 x 65 mm
Weight	1.30 kg	1.30 kg	1.63 kg	1.63 kg
Product Colour	White	Black	White	Black
Model Variant	Standard	Standard	Emergency	Emergency
Operating Ambient Temperature	-20 to 45°C	-20 to 45°C	0 to 40°C	0 to 40°C



Product Code	VISTA-EV12-MS	VISTA-EV12-MS-BK	VISTA-EV12-EM-MS	VISTA-EV12-EM-MS-BK
SAP Code	2002350	2002356	2002351	2002357
Power	20 / 40 W	20 / 40 W	20 / 40 W	20 / 40 W
Lumen Output	20 W: 2200 / 2300 / 2200 lm 40 W: 4400 / 4600 / 4400 lm	20 W: 2200 / 2300 / 2200 lm 40 W: 4400 / 4600 / 4400 lm	20 W: 2200 / 2300 / 2200 lm 40 W: 4400 / 4600 / 4400 lm	20 W: 2200 / 2300 / 2200 lm 40 W: 4400 / 4600 / 4400 lm
Efficacy	20 W: 96 / 105 / 96 lm/W 40 W: 102 / 110 / 102 lm/W	20 W: 96 / 105 / 96 lm/W 40 W: 102 / 110 / 102 lm/W	20 W: 96 / 105 / 96 lm/W 40 W: 102 / 110 / 102 lm/W	20 W: 96 / 105 / 96 lm/W 40 W: 102 / 110 / 102 lm/W
Dimensions	1205 x 64 x 65 mm	1205 x 64 x 65 mm	1205 x 64 x 65 mm	1205 x 64 x 65 mm
Weight	1.42 kg	1.42 kg	1.66 kg	1.66 kg
Product Colour	White	Black	White	Black
Model Variant	Intellisensor	Intellisensor	Intellisensor + Emergency	Intellisensor + Emergency
Operating Ambient Temperature	-20 to 45°C	-20 to 45°C	0 to 40°C	0 to 40°C

Find out more



COMMON SPECIFICATIONS

Body Material	Steel	Input Voltage	220-240Vac, 50/60Hz
Diffuser Material	Polycarbonate (Opal)	Electrical Classification	Class I
IP Rating	IP20	Power Factor	> 0.9
Beam Angle	120°	Protection	Overload / Short Circuit
CRI	> 80	Projected Lifespan	> 50,000hrs @Ta25°C (L80)
SDCM	< 3	Smart:	KASTA Compatible
Driver	Integrated	Dimming	Non-Dimmable
CCT	4000 / 4700 / 5700 K		
Power Connection	PA14 Terminals		

APPLICATIONS

Kitchen / Food Prep
Garage
Shed
Education Facilities
Store Rooms
Storage Facilities
Workshops
Manufacturing Facilities
Indoor Recreation
General Industrial
Office

ACCESSORIES

Mounting Supports

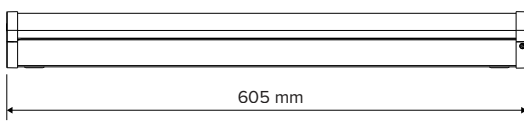


1m Suspension Kit
TSSKIT-1M
(SAP 2000863)

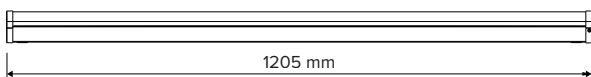
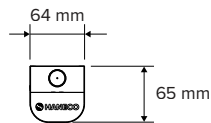


2m Suspension Kit
TSSKIT-2M
(SAP 2000864)

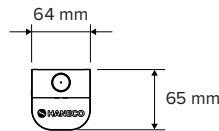
DIMENSIONS



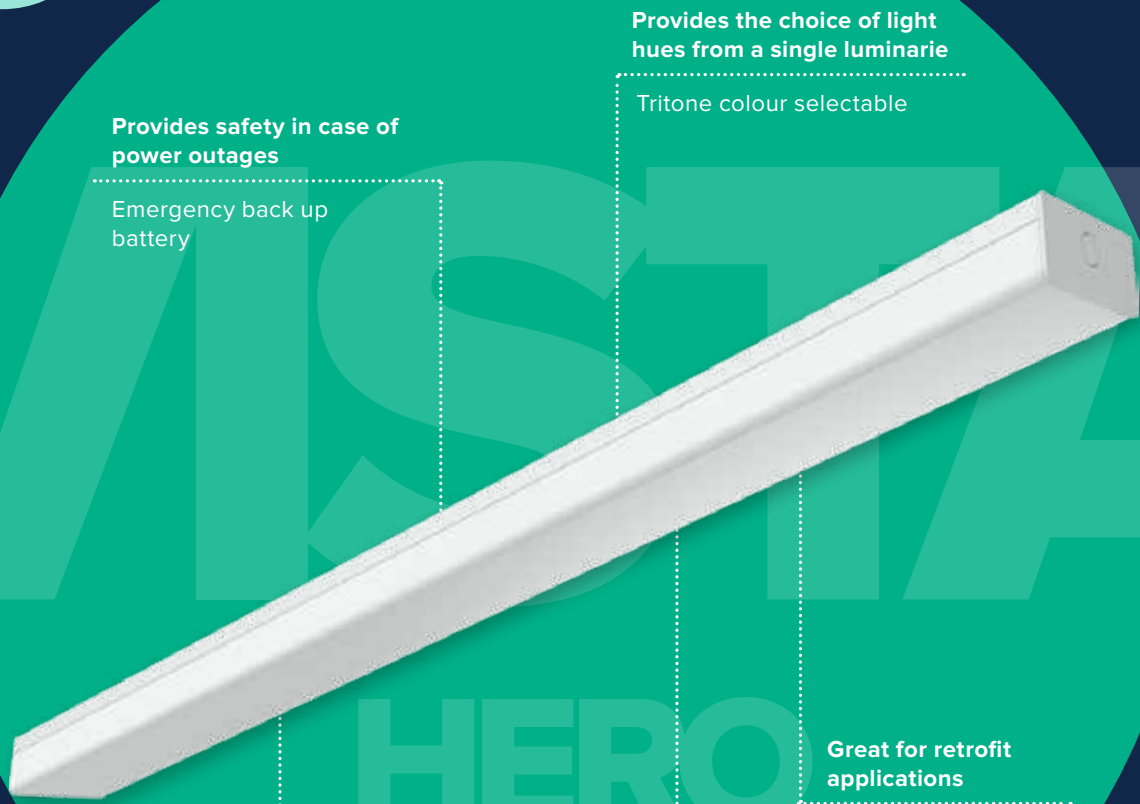
VISTA-EV06



VISTA-EV12







Provides safety in case of power outages

Emergency back up battery

Provides the choice of light hues from a single luminaire

Tritone colour selectable

Great for retrofit applications

Wide body housing

Adjust the light to suit the requirements

Power switchable

Suitable for food manufacturing areas

HACCP approved

VISTA HERO

Conventional and elegant.

VISTA HERO is a conventional but elegant wide body (125mm) batten suitable for either new installations or retrofit. It offers both motion sensor (MS) and emergency (EM) versions.



2POWER
Switchable Modes



TRITONE
Colour Selectable



HACCP
INTERNATIONAL
Food Safe



YES
Gov Rebate



50,000hr
Projected Lifespan



5yr
Warranty

PRODUCT RANGE



Product Code	VISTA-HR12	VISTA-HR12-EM	VISTA-HR12-MS	VISTA-HR12-EM-MS
SAP Code	2001940	2001941	2001942	2001943
Power	20 / 40 W	20 / 40 W	20 / 40 W	20 / 40 W
Lumen Output	20 W: 2100 / 2180 / 2100 lm 40 W: 4000 / 4180 / 4000 lm	20 W: 2100 / 2180 / 2100 lm 40 W: 4000 / 4180 / 4000 lm	20 W: 2100 / 2180 / 2100 lm 40 W: 4000 / 4180 / 4000 lm	20 W: 2100 / 2180 / 2100 lm 40 W: 4000 / 4180 / 4000 lm
Efficacy	20 W: 105 / 115 / 105 lm/W 40 W: 100 / 110 / 100 lm/W	20 W: 105 / 115 / 105 lm/W 40 W: 100 / 110 / 100 lm/W	20 W: 105 / 115 / 105 lm/W 40 W: 100 / 110 / 100 lm/W	20 W: 105 / 115 / 105 lm/W 40 W: 100 / 110 / 100 lm/W
CCT	4000 / 4700 / 5700 K	4000 / 4700 / 5700 K	4000 / 4700 / 5700 K	4000 / 4700 / 5700 K
Dimensions	1230 x 125 x 68 mm	1165 x 125 x 68 mm	1165 x 125 x 68 mm	1165 x 125 x 68 mm
Weight	2.00 kg	2.40 kg	2.00 kg	2.40 kg
Product Colour	White	White	White	White
Model Variant	Standard	Emergency	Intellisensor	Intellisensor + Emergency
Operating Ambient Temperature	-20 to 45°C	0 to 45°C	-20 to 45°C	0 to 45°C

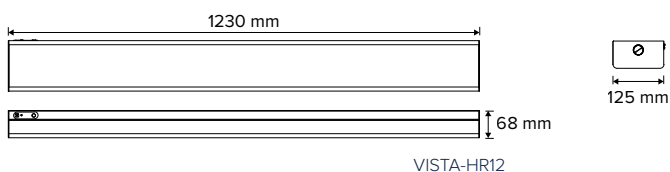
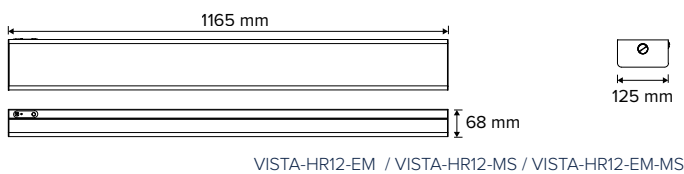
COMMON SPECIFICATIONS

Body Material	Steel	Input Voltage	220-240Vac, 50/60Hz
Diffuser Material	Polycarbonate (Opal)	Electrical Classification	Class I
IP Rating	IP20	Power Factor	> 0.9
Beam Angle	120°	Protection	Overload / Short Circuit
CRI	> 80	Projected Lifespan	> 50,000hrs @Ta25°C (L70)
SDCM	< 5	Dimming	Non-Dimmable
Driver	Integral		
Power Connection	PA12 Terminals		

APPLICATIONS

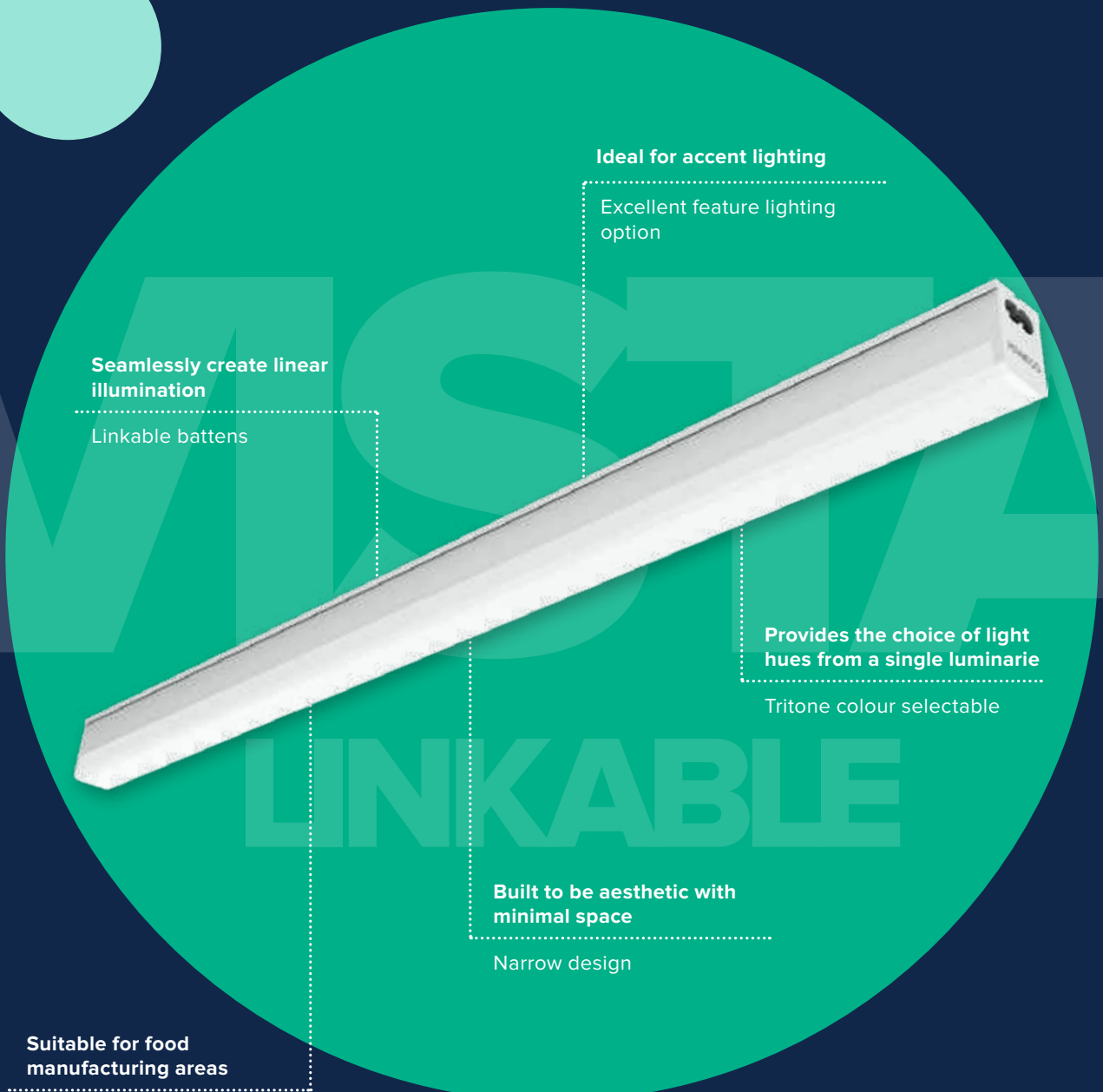
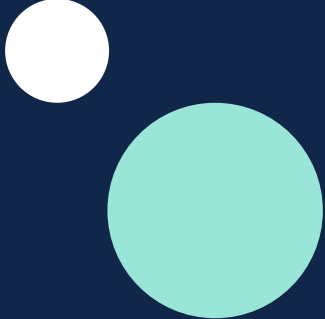
Kitchen / Food Prep
Garage
Storage Rooms
Storage Facilities
Manufacturing Facilities
Shed

DIMENSIONS



Find out more





Ideal for accent lighting

Excellent feature lighting option

Seamlessly create linear illumination

Linkable battens

Provides the choice of light hues from a single luminaire

Tritone colour selectable

Built to be aesthetic with minimal space

Narrow design

Suitable for food manufacturing areas

HACCP approved

VISTA LINKABLE

Slim and versatile.

VISTA LINKABLE is a slim and versatile batten system. Compact and seamless connection makes it ideal for linear applications including accent, cove, shelf and under cabinet lighting. High CRI of >90 makes these ideal for retail shelving, displaying authentic merchandise colours.



TRITONE
Colour Selectable



IP20
Ingress Protection Rating



>90
CRI Colour Rendering Index



HACCP
INTERNATIONAL
Food Safe



50,000hr
Projected Lifespan



5yr
Warranty

PRODUCT RANGE



Product Code	VISTA-LK4W03	VISTA-LK9W06	VISTA-LK13W09	VISTA-LK18W12
SAP Code	2001919	2001920	2001921	2001922
Power	4.5 W	9 W	13 W	18 W
Lumen Output	410 / 480 / 450 lm	810 / 1040 / 990 lm	1300 / 1490 / 1430 lm	1700 / 2040 / 2000 lm
Efficacy	91 / 107 / 100 lm/W	90 / 116 / 110 lm/W	100 / 115 / 110 lm/W	94 / 113 / 111 lm/W
CCT	3000 / 4000 / 5700 K	3000 / 4000 / 5700 K	3000 / 4000 / 5700 K	3000 / 4000 / 5700 K
Dimensions	285 x 29 x 36 mm	585 x 29 x 36 mm	885 x 29 x 36 mm	1185 x 29 x 36 mm
Weight	0.15 kg	0.30 kg	0.45 kg	0.60 kg
Product Colour	White	White	White	White

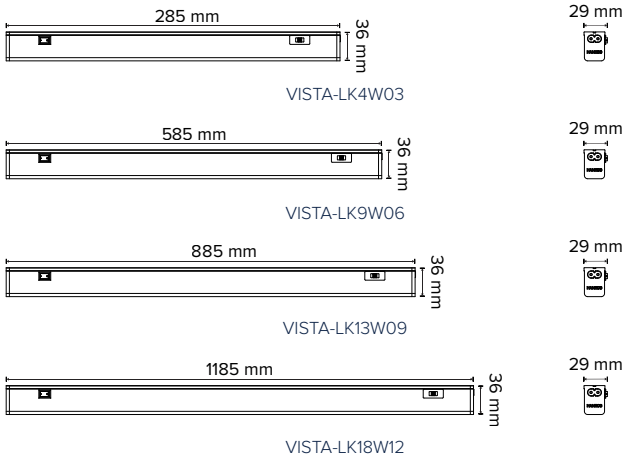
COMMON SPECIFICATIONS

Body Material	Polycarbonate	Power Factor	> 0.9
Diffuser Material	Polycarbonate (Opal)	Protection	Overload / Short Circuit
IP Rating	IP20	Projected Lifespan	> 50,000hrs @Ta25°C (L70)
Beam Angle	130°	Operating Ambient Temperature	-20 to 45°C
CRI	> 90	Smart	KASTA Compatible
SDCM	< 7	Dimming	Non-Dimmable
Driver	Integral		
Power Lead	1m Flex & Plug		
Input Voltage	220-240Vac, 50/60Hz		
Electrical Classification	Class II		

APPLICATIONS

Kitchen / Food Prep
 Accent / Display / Feature Lighting
 Showrooms
 Boardroom / Meeting Rooms
 Function Areas
 Food Courts
 Retail Spaces
 Restaurant / Cafés
 Cocktail Lounge
 Entrance
 Offices

DIMENSIONS



ACCESSORIES

Electrical Connectors



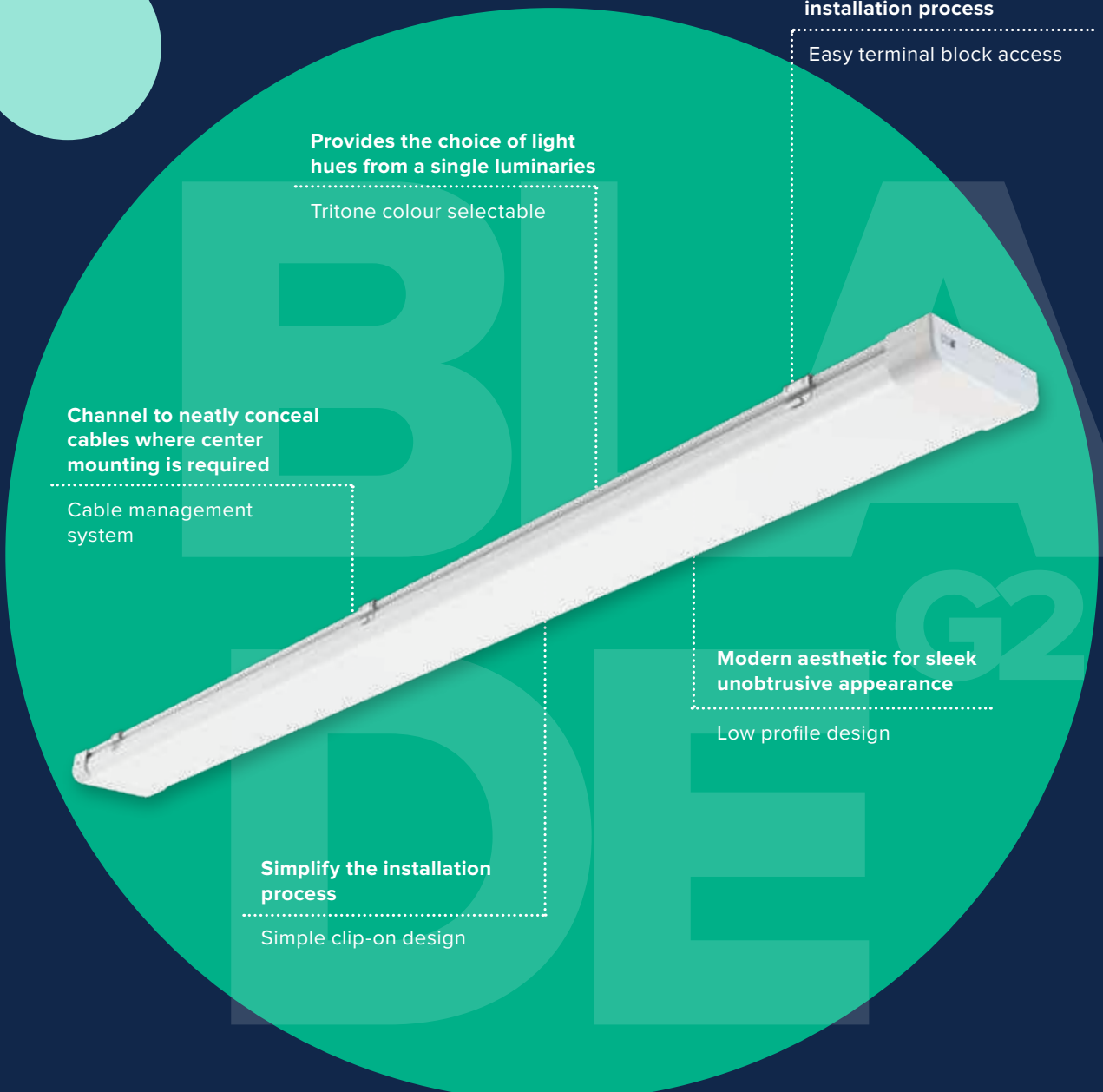
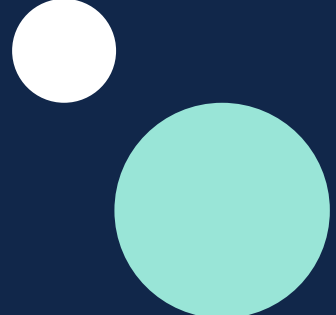
Connectors 4pcs Pack
VISTA-LK4PCNTR
 (SAP 2001924)



Find out more



Maximum total length of 8m per circuit



Aids in improving the installation process

Easy terminal block access

Provides the choice of light hues from a single luminaries

Tritone colour selectable

Channel to neatly conceal cables where center mounting is required

Cable management system

Modern aesthetic for sleek unobtrusive appearance

Low profile design

Simplify the installation process

Simple clip-on design

BLADE^{G2}

Modern, low profile design.

BLADE G2 is a sleek and modern LED batten, ideal when low profile and high output is required. This aesthetically pleasing batten delivers cost savings without compromising light output.



TRITONE
Colour Selectable



120°
Beam Angle



CLASS II
Double Insulated



HACCP
INTERNATIONAL
Food Safe



50,000hr
Projected Lifespan



5yr
Warranty

PRODUCT RANGE



Product Code	BLADE06-TRI	BLADE12-TRI
SAP Code	2002306	2002307
Power	20 W	40 W
Lumen Output	2000 / 2200 / 2000 lm	4000 / 4400 / 4000 lm
Efficacy	Up to 117 lm/W	Up to 121 lm/W
CCT	4000 / 4700 / 5700 K	4000 / 4700 / 5700 K
Dimensions	620 x 100 x 30 mm	1215 x 100 x 30 mm
Weight	0.90 kg	1.50 kg
Product Colour	White	White
Operating Ambient Temperature	-25 to 45°C	-25 to 45°C

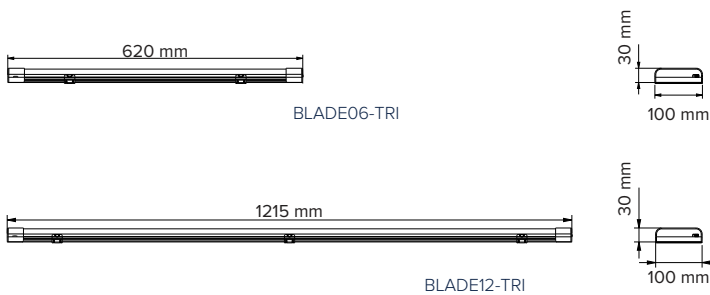
COMMON SPECIFICATIONS

Body Material	Polycarbonate	Input Voltage	220-240Vac, 50/60Hz
Diffuser Material	Polycarbonate (Opal)	Electrical Classification	Class II
IP Rating	IP20	Power Factor	> 0.9
Beam Angle	120°	Protection	Overload / Short Circuit
CRI	> 80	Projected Lifespan	> 50,000hrs @Ta25°C (L70)
SDCM	< 3	Dimming	Non-Dimmable
Driver	Integral		
Power Connection	PA12 Terminals		

APPLICATIONS

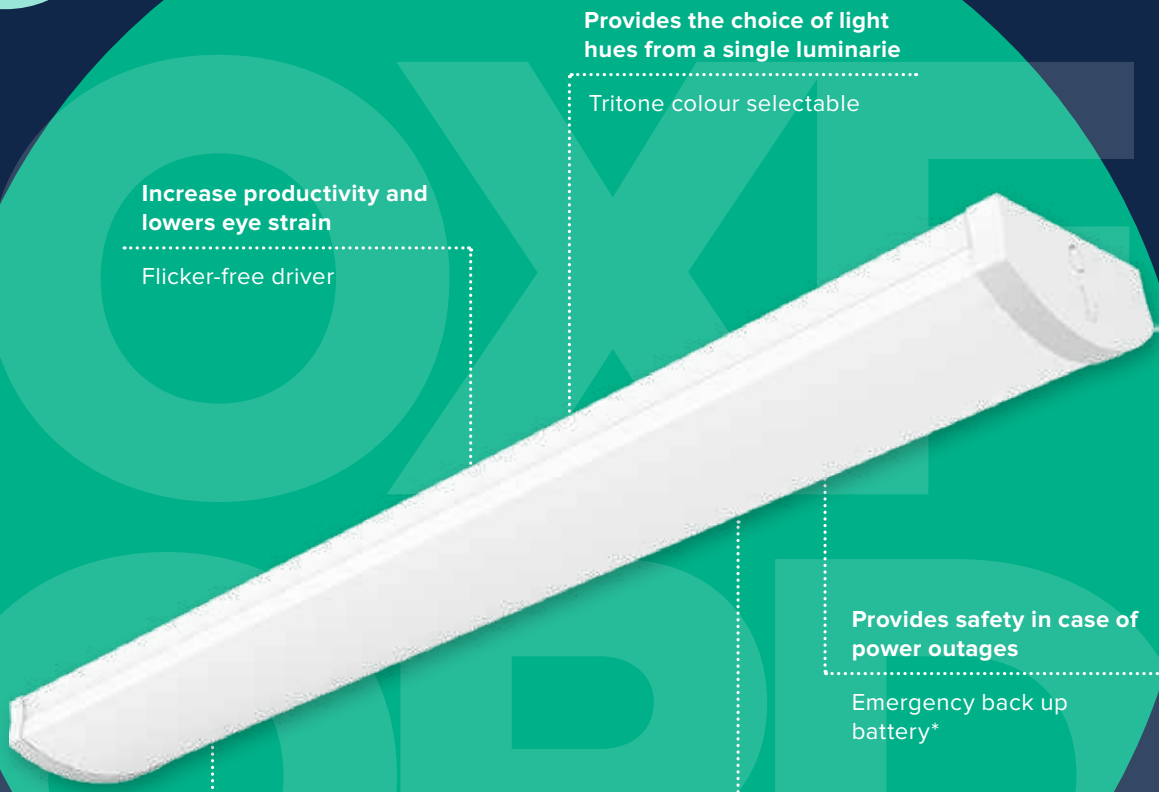
Kitchen / Food Prep
Laundry
Entrance
Garage
Education Facilities
Store Rooms

DIMENSIONS



Find out more





Provides the choice of light hues from a single luminaire

Tritone colour selectable

Increase productivity and lowers eye strain

Flicker-free driver

Provides safety in case of power outages

Emergency back up battery*

Adjust the light to suit the requirements

Power switchable

Improve power conservation

Sensor activation*

OXFORD

Aesthetically pleasing, wide-body batten.

OXFORD is an extra wide, premium LED batten with a striking aesthetic design. With dedicated 4000K high quality LED chips, SDCM rating of <3 and flicker free drivers, the OXFORD provides premium light performance suitable for any creative workspace such as an office or classroom.



*Model dependent

PRODUCT RANGE



Product Code	OXFORD12	OXFORD12-EM	OXFORD12-MS	OXFORD12-EM-MS
SAP Code	2001885	2001886	2001887	2001888
Power	20 / 29 / 32 / 40 W	20 / 29 / 32 / 40 W	40 W	40 W
Lumen Output	20 W: 2200 / 2300 / 2200 lm 29 W: 3140 / 3280 / 3130 lm 32 W: 3470 / 3620 / 3440 lm 40 W: 4200 / 4400 / 4200 lm	20 W: 2200 / 2300 / 2200 lm 29 W: 3140 / 3280 / 3130 lm 32 W: 3470 / 3620 / 3440 lm 40 W: 4200 / 4400 / 4200 lm	4200 / 4400 / 4200 lm	4200 / 4400 / 4200 lm
Efficacy	20 W: 110 / 115 / 110 lm/W 29 W: 108 / 113 / 108 lm/W 32 W: 108 / 113 / 108 lm/W 40 W: 105 / 110 / 105 lm/W	20 W: 110 / 115 / 110 lm/W 29 W: 108 / 113 / 108 lm/W 32 W: 108 / 113 / 108 lm/W 40 W: 105 / 110 / 105 lm/W	105 / 110 / 105 lm/W	105 / 110 / 105 lm/W
CCT	4000 / 4700 / 5700 K	4000 / 4700 / 5700 K	4000 / 4700 / 5700 K	4000 / 4700 / 5700 K
Dimensions	1221 x 212 x 88 mm	1221 x 212 x 88 mm	1221 x 212 x 88 mm	1221 x 212 x 88 mm
Weight	4.40 kg	4.70 kg	4.40 kg	4.70 kg
Product Colour	White	White	White	White
Model Variant	Standard	Emergency	Intellisensor	Intellisensor + Emergency
Operating Ambient Temperature	-20 to 50°C	0 to 50°C	-20 to 50°C	0 to 50°C

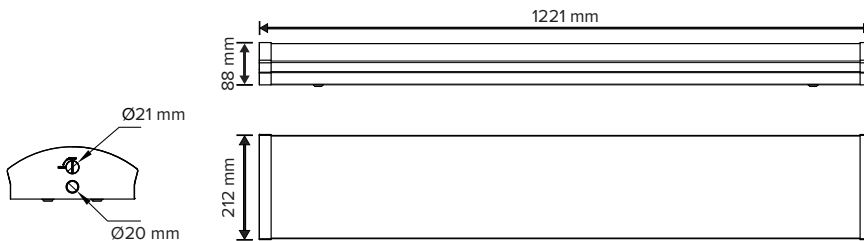
COMMON SPECIFICATIONS

Body Material	Steel	Input Voltage	220-240Vac, 50/60Hz
Diffuser Material	Polycarbonate (Opal)	Electrical Classification	Class I
IP Rating	IP20	Power Factor	> 0.9
Beam Angle	120°	Protection	Overload / Short Circuit
CRI	> 80	Projected Lifespan	> 50,000hrs @Ta25°C (L70)
SDCM	< 3	Dimming	Non-Dimmable
Power Connection	PA14 Terminals		

APPLICATIONS

Education Facilities
Garage
Function Areas
Retail Spaces
Store Rooms
Offices

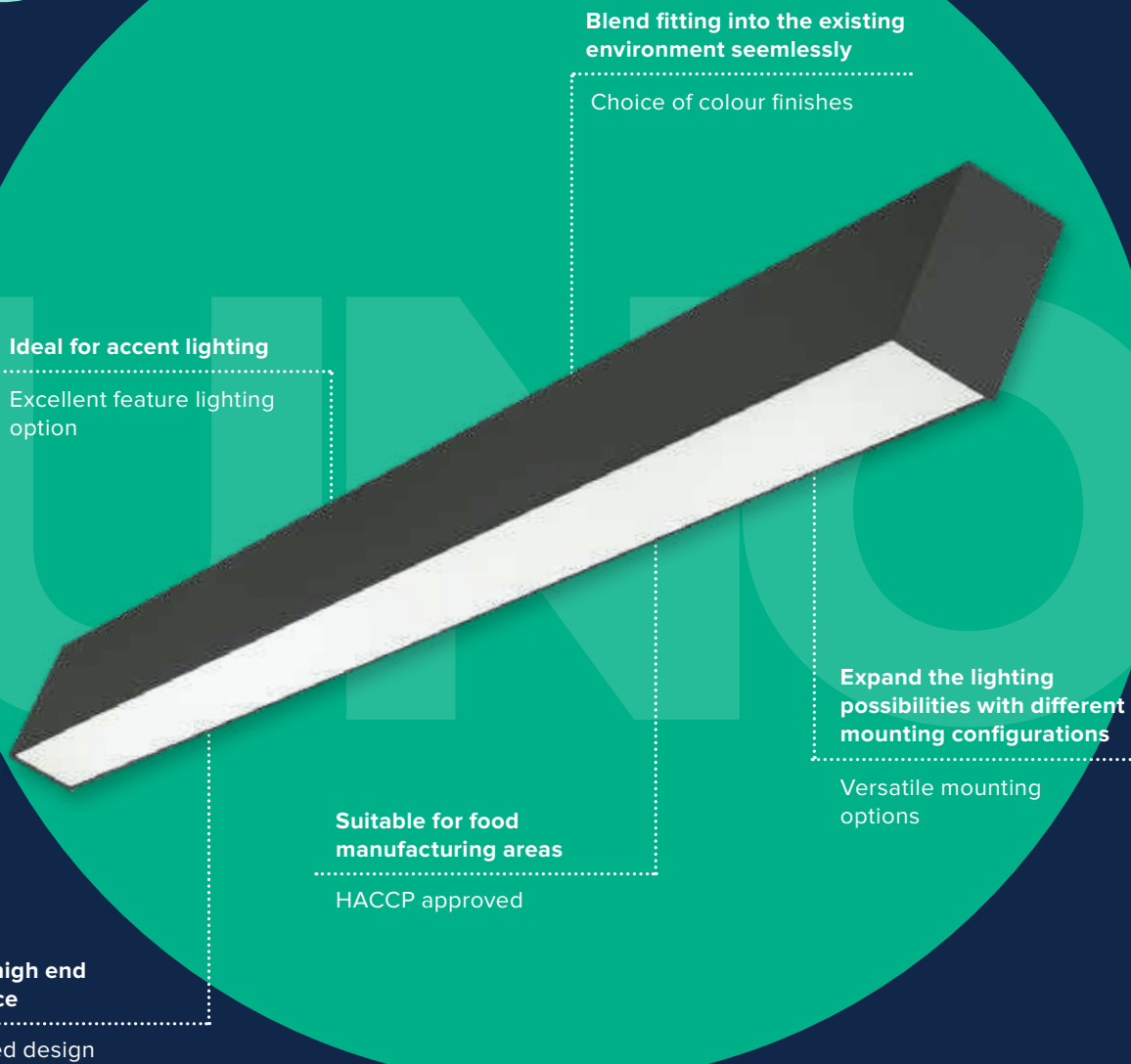
DIMENSIONS



OXFORD12 / OXFORD12-EM / OXFORD12-MS / OXFORD12-EM-MS

Find out more





Blend fitting into the existing environment seamlessly

Choice of colour finishes

Ideal for accent lighting

Excellent feature lighting option

Expand the lighting possibilities with different mounting configurations

Versatile mounting options

Suitable for food manufacturing areas

HACCP approved

Provides high end appearance

Modernised design

UNO

Sleek and stylish.

UNO is a stylish and minimalistic aluminium profile luminaire, offering outstanding performance and design flexibility for architecturally demanding applications.

TRITONE
Colour Selectable

IP40
Ingress Protection Rating

110°
Beam Angle

HACCP
INTERNATIONAL
Food Safe

50,000hr
Projected Lifespan

5yr
Warranty

PRODUCT RANGE



Product Code	UNO30W09WH	UNO30W09BK	UNO40W12WH	UNO40W12BK
SAP Code	2002327	2002326	2002329	2002328
Power	30 W	30 W	40 W	40 W
Lumen Output	2500 / 2600 / 2500 lm	2500 / 2600 / 2500 lm	3400 / 3500 / 3400 lm	3400 / 3500 / 3400 lm
Efficacy	80 / 83 / 80 lm/W	80 / 83 / 80 lm/W	88 / 93 / 85 lm/W	88 / 93 / 85 lm/W
CCT	3000 / 4000 / 5000 K	3000 / 4000 / 5000 K	3000 / 4000 / 5000 K	3000 / 4000 / 5000 K
Dimensions	907 x 69 x 87 mm	907 x 69 x 87 mm	1204 x 69 x 87 mm	1204 x 69 x 87 mm
Weight	1.25 kg	1.25 kg	1.80 kg	1.80 kg
Product Colour	White	Black	White	Black



Product Code	UNO50W15WH	UNO50W15BK
SAP Code	2002331	2002330
Power	50 W	50 W
Lumen Output	4250 / 4350 / 4250 lm	4250 / 4350 / 4250 lm
Efficacy	83 / 85 / 84 lm/W	83 / 85 / 84 lm/W
CCT	3000 / 4000 / 5000 K	3000 / 4000 / 5000 K
Dimensions	1500 x 69 x 87 mm	1500 x 69 x 87 mm
Weight	2.20 kg	2.20 kg
Product Colour	White	Black

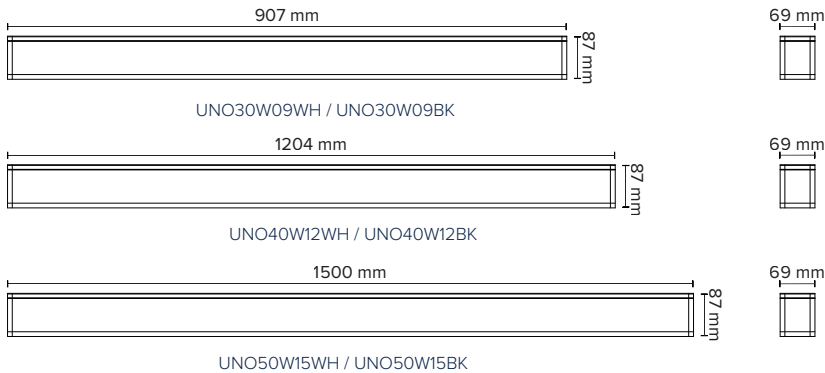
COMMON SPECIFICATIONS

Body Material	Aluminium	Input Voltage	220-240Vac, 50/60Hz
Diffuser Material	Polycarbonate (Opal)	Electrical Classification	Class I
IP Rating	IP40	Power Factor	> 0.9
Food Grade Approval	HACCP	Protection	Overload / Short Circuit
Beam Angle	110°	Projected Lifespan	> 50,000hrs @Ta25°C (L70)
CRI	> 80	Operating Ambient Temperature	-20 to 45°C
SDCM	< 3	Dimming	Phase-Cut Dimmable (Trailing Edge, 10-100%)
Driver	Integral		
Power Lead	1.2m Flex & Plug		

APPLICATIONS

- Reception / Lobby / Boardroom / Meeting Rooms
- Education
- Kitchen / Food Prep
- Hallways
- Entrance
- Accent / Display / Feature Lighting
- Showrooms
- Function Areas
- Food Courts
- Retail Spaces
- Hotel Common Areas
- Restaurant / Cafés
- Cocktail Lounge

DIMENSIONS



ACCESSORIES

Mounting Supports



Suspension Kit
UNO-SUS KIT
(SAP 2002320)

Find out more



Accessories

GUARDS



Product Code	VISTA20W06-WIRE GUARD & Bracket	VISTA40W12-WIRE GUARD & Bracket
SAP Code	3000032	3000033
Type	600mm Wire Guard + Bracket	1200mm Wire Guard + Bracket
Compatible With	VISTA20W06-TRI VISTA20W06-TRI-EM	VISTA20/40W12-TRI VISTA20/40W12-TRI-EM VISTA40W12-TRI-SS-EM VISTA12-SS VISTA12-DALI

EMERGENCY KITS



Product Code	LI-BATTERY-BATTEN
SAP Code	2001908
Type	Replacement LiFePo4 Battery only for For indoor batten with Emergency function
Compatible With	VISTA (all EM models excluding VISTA12-EMDD)

ELECTRICAL CONNECTORS AND ADAPTORS



Product Code	VISTA-LK4PCNTR
SAP Code	2001924
Type	VISTA ^{LINKABLE} Connectors 4pcs Pack
Compatible With	VISTA ^{LINKABLE} (all models)

MOUNTING SUPPORTS



Product Code	UNO-SUSKIT
SAP Code	2002320
Type	Suspension Kit
Compatible With	UNO (all models)



Product Code	TSSKIT-1M	TSSKIT-2M
SAP Code	2000863	2000864
Type	1m Suspension Kit	2m Suspension Kit
Compatible With	VISTA (all models) VISTA ^{EVO} (all models)	VISTA (all models) VISTA ^{EVO} (all models)