

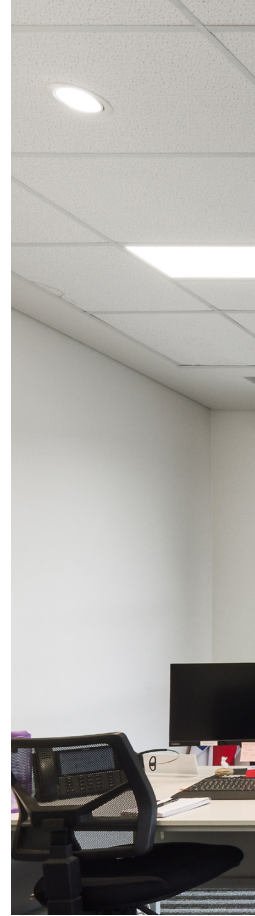




PANELS

MATRIX ^{G4}	80
MATRIX ^{EVO}	84
MATRIX ^{LG SENSOR}	86
PANNELLO	88
ACCESSORIES	90

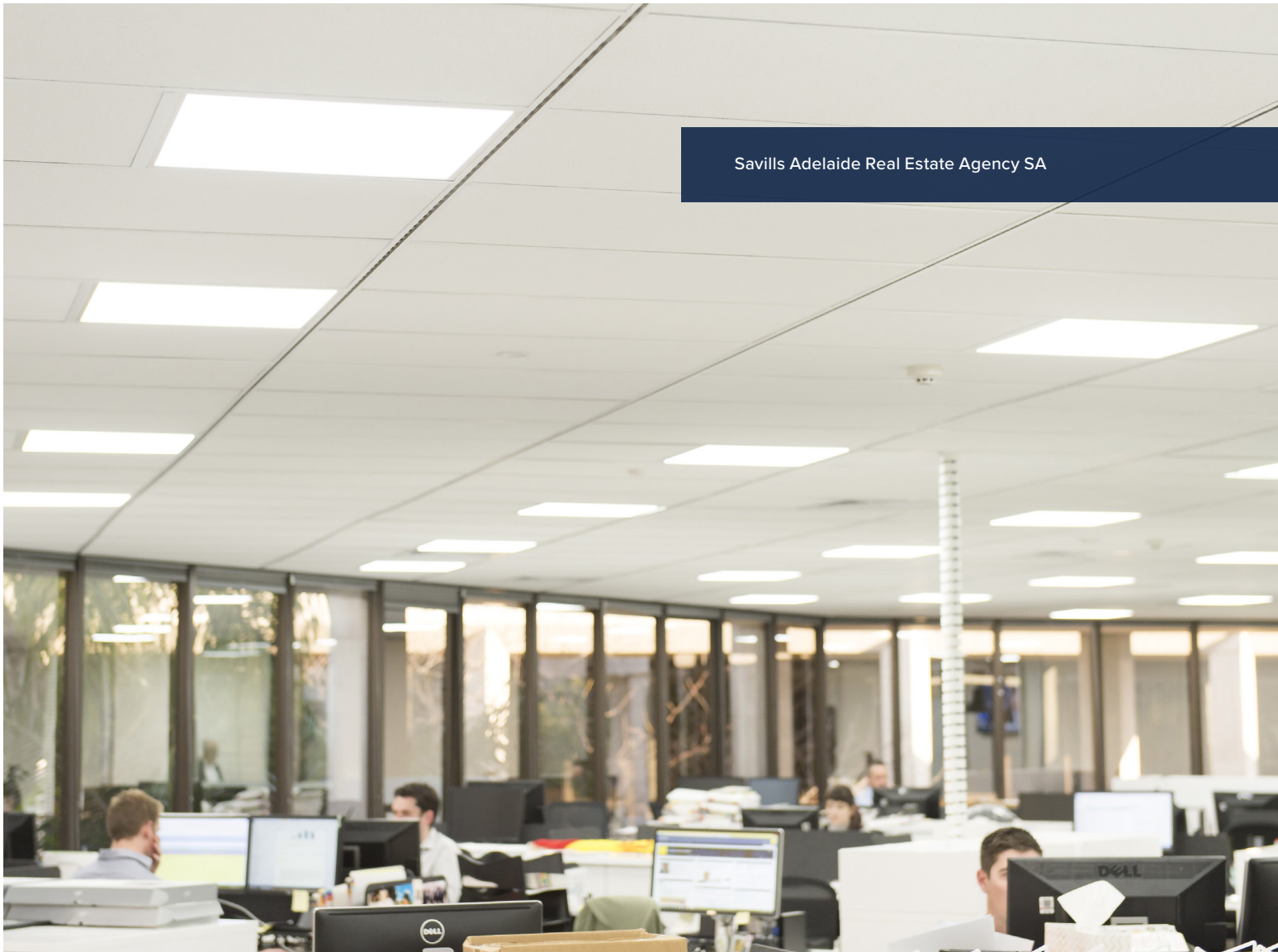




CMI Toyota Southside SA



Savills Adelaide Real Estate Agency SA



Increase productivity and lowers eyes strain

Flicker-free driver

Provides the choice of light hues and brightness from a single luminaire

Tritone colour selectable and power switchable*



Ensures fast and accurate detection of oxygen deficiency in patients

Cyanosis compliant

Excellent lighting option for indoor work places

Low Unified Glare Rating (UGR)

True colour definition to highlight natural colour

High Colour Rendering Index (CRI)

MATRIX^{G4}

One panel, endless possibilities.

MATRIX G4 panels bring low glare light (UGR<19) and even illumination to classrooms, offices and medical facilities requiring Cyanosis compliance. Tritone adjustability and high efficiency (up to 124lm/w) make it a perfect, eye-friendly solution for learning, working and healthcare.

*Model dependent



UGR<19
Low Glare



>90
CRI Colour Rendering Index



Flicker Free



COI
Cyanosis Compliant



5yr
Warranty



GREENSTAR
Suitable

PRODUCT RANGE



Product Code	MATX0312-PS-G4	MATX0606-PS-G4	MATX0306-20-G4	MATX0612-48-G4
SAP Code	2002455	2002456	2002457	2002458
Power	25 / 28 / 32 / 36 W	25 / 28 / 32 / 36 W	21 W	48 W
Lumen Output	25 W: 2902 / 2929 / 2802 lm 28 W: 3341 / 3391 / 3249 lm 32 W: 3728 / 3815 / 3615 lm 36 W: 4005 / 4157 / 3969 lm	25 W: 3003 / 3045 / 2874 lm 28 W: 3457 / 3488 / 3315 lm 32 W: 3845 / 3900 / 3691 lm 36 W: 4088 / 4252 / 4063 lm	1863 / 1943 / 1931 lm	5629 / 5825 / 5597 lm
Efficacy	25 W: 116 / 117 / 112 lm/W 28 W: 121 / 121 / 116 lm/W 32 W: 116 / 119 / 113 lm/W 36 W: 111 / 115 / 110 lm/W	25 W: 120 / 122 / 115 lm/W 28 W: 123 / 124 / 118 lm/W 32 W: 120 / 122 / 115 lm/W 36 W: 113 / 118 / 113 lm/W	109 / 114 / 113 lm/W	117 / 121 / 116 lm/W
CCT	4000 / 4500 / 5000 K	4000 / 4500 / 5000 K	4000 / 4500 / 5000 K	4000 / 4500 / 5000 K
Dimensions	295 x 1195 x 30 mm	595 x 595 x 30 mm	295 x 595 x 30 mm	595 x 1195 x 30 mm
Weight	2.30 kg	1.96 kg	1.10 kg	4.76 kg
Product Colour	White	White	White	White

TRADE PACK (5 PACK PANEL BUNDLE)

Product Code	MATX0312-G4-BLOK
SAP Code	2002527

COMMON SPECIFICATIONS

Body Material	Steel	Electrical Classification	Class II
Diffuser Material	PMMA	Power Factor	> 0.9
IP Rating	IP40	Protection	Overload / Short Circuit
CRI	> 90	Projected Lifespan	> 85,000hrs @Ta40°C (L80 B10)
SDCM	< 3	Operating Ambient Temperature	-20 to 40°C
Driver	Remote	Smart	KASTA Compatible
Flicker Free	Yes	Dimming	Non-Dimmable DSI dimming available Dimmable Models Available (See next page)
Input Voltage	220-240Vac, 50/60Hz		

APPLICATIONS

- Showrooms
- Offices
- Boardroom / Meeting Rooms
- Function Areas
- Storage Rooms
- Manufacturing Facilities
- Medical Facilities
- Education Facilities

ACCESSORIES

Mounting Supports



1273 x 304 x 70 mm
Surface Mount Panel
Frame to suit 0312 models
SMPF0312-OP-V4
(SAP 2002219)



673 x 606 x 70 mm
Surface Mount Panel
Frame to suit 0606 models
SMPF0606-OP-V4
(SAP 2002220)



673 x 304 x 70 mm
Surface Mount Panel
Frame to suit 0306 models
SMPF0306-OP-V4
(SAP 2002123)



1288 x 607 x 68 mm
Surface Mount Panel
Frame to suit 0612 models
SMPF0612-OP-V3
(SAP 2002218)



330 x 1230 x 41 mm
Recessed Panel Frame
to suit 0312 models
PLRF0312-V2
(SAP 2002118)



630 x 630 x 41 mm
Recessed Panel Frame
to suit 0606 models
PLRF0606
(SAP 2000359)



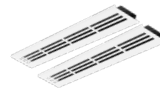
330 x 630 x 41 mm
Recessed Panel Frame
to suit 0306 models
PLRF0306
(SAP 2000357)



630 x 12 x 41 mm
Recessed Panel Frame
to suit 0612 models
PLRF0612
(SAP 2000360)



1195 x 259 x 35 mm
Vented Recessed Panel
Frame to suit 0312 models
RF0412-AF
(SAP 2001091)

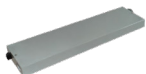


1196 x 596 x 10.5 mm
Vented Recessed Panel
Frame to suit 0312 models
RF0612-AF
(SAP 2000410)



Panel Suspension Kit
to suit all models
SUSKIT-MATRIX
(SAP 2001880)

Emergency Kits

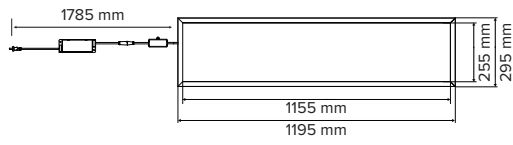


Emergency Kit to suit 36W
0606, 0312, 0612 models
EMLED-2.4W-3H-60V 40PL
(SAP 2000590)

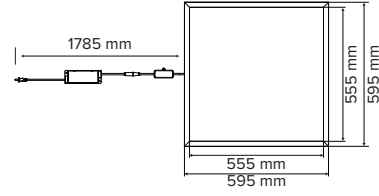
Find out more



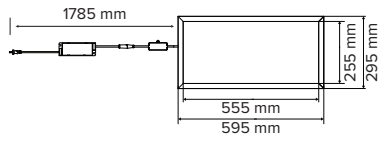
DIMENSIONS



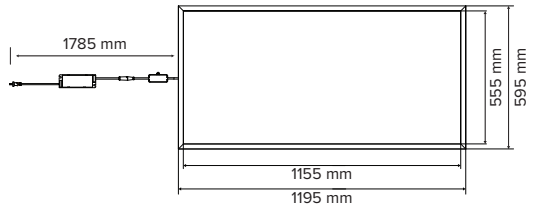
MATX0312-PS-G4



MATX0606-PS-G4



MATX0306-20-G4



MATX0612-48-G4

DIMMABLE MODELS

Product Code	MATX0312-G4-25DIM	MATX0312-G4-40DIM	MATX0312-G4-TDALI	MATX0312-G4-TDALI	MATX0312-G4-H10VD
Power	25 W	40 W	40 W	40 W	40 W
Dimming Type	Phase Cut	Phase Cut	DALI	DALI	1-10 V
Dimensions	295 x 1195 x 33 mm	295 x 1195 x 33 mm	295 x 1195 x 33 mm	295 x 1195 x 33 mm	295 x 1195 x 33 mm

Product Code	MATX0606-G4-25DIM	MATX0606-G4-40DIM	MATX0606-G4-HDALI	MATX0606-G4-TDALI	MATX0606-G4-H10VD
Power	25 W	40 W	40 W	40 W	40 W
Dimming Type	Phase Cut	Phase Cut	DALI	DALI	1-10 V
Description	595 x 595 x 33 mm	595 x 595 x 33 mm	595 x 595 x 33 mm	595 x 595 x 33 mm	595 x 595 x 33 mm

Product Code	MATX0306-G4-21DIM	MATX0306-G4-HDALI	MATX0306-G4-HDALI	MATX0306-G4-H10VD
Power	21 W	21 W	21 W	21 W
Dimming Type	Phase Cut	DALI	DALI	1-10 V
Dimensions	295 x 595 x 33 mm	295 x 595 x 33 mm	295 x 595 x 33 mm	295 x 595 x 33 mm

Product Code	MATX0612-G4-40DIM	MATX0612-G4-HDALI	MATX0612-G4-TDALI	MATX0612-G4-H10VD
Power	40 W	40 W	40 W	45 W
Dimming Type	Phase Cut	DALI	DALI	1-10 V
Description	595 x 1195 x 33 mm	595 x 1195 x 33 mm	595 x 1195 x 33 mm	595 x 1195 x 33 mm



MATRIX^{G4} BLOK

MATX0312-G4-BLOK

OUR GREENSTAR PANELS JUST GOT **BLOK** SUSTAINABLE for your projects

MATRIX G4 is our **Greenstar Compliant** solution that reduces energy costs. The panels provide glare-free light (UGR<19) & even illumination to classrooms, offices & COI-compliant medical spaces. In addition to being four power switchable and tritone selectable, MATRIX G4 also features exceptionally high efficiency (up to 124 lumens/watt), making it a perfect, eye-friendly solution for learning, working and healthcare.

- POWER** Switchable Modes
- >90** CRI Colour Rendering Index
- COI** Cyanosis Compliant
- EDU** Dept. of Education & Training Compliant
- UGR<19** Low Glare
- Flicker** Free
- 85,000hr** Projected Lifespan
- 5yr** Warranty

Need LED panels for your project? **WHY NOT BLOK?**

The BLOK packaging includes five **MATRIX G4** panels, designed to optimise cost savings and speed up installation. Each pack contains panels without inner packaging, ensuring efficiency and convenience



FASTER INSTALLATION

Less packaging speeds up installation, so you can focus on tasks and boosting productivity.



REDUCED WASTAGE

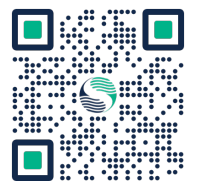
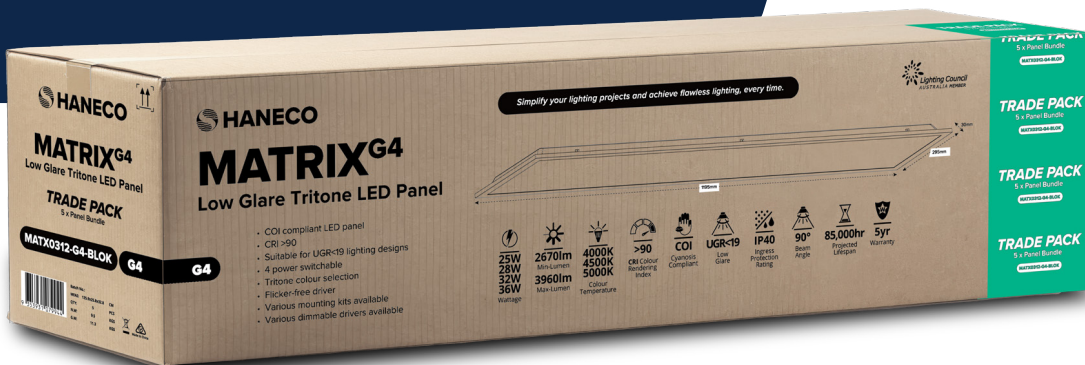
Less packaging reduces waste and cuts recycling costs. Better for you and the environment.



COST SAVINGS

Less packaging means lower installation, disposal, and per-unit costs.

Streamlined. Sustainable. Superior.



MORE ABOUT MATRIX^{G4} BLOK

Provides the choice of light hues from a single luminaire

Tritone colour selectable

Increase productivity and lowers eyes strain

Flicker-free driver

Suitable for suspended ceilings applications

Commercial panel light design

Covers a diverse range application

Extensive model range

Adjust the light to suit the requirements

Power switchable*

MATRIX^{EVO}

Streamlined solution, competitive value.

Introducing the MATRIX EVO, the ultimate lighting solution for discerning businesses. This highly efficient, tritone selectable backlit panel offers unparalleled versatility and performance, making it a perfect fit for any workspace.

*Model dependent



PRODUCT RANGE



Product Code	MATX0312-EV	MATX0606-EV	MATX0312-25-EV	MATX0606-25-EV
SAP Code	2002451	2002452	2002452	2002454
Power	28 / 32 / 36 / 40 W	28 / 32 / 36 / 40 W	28 W	28 W
Lumen Output	28 W: 3000 / 3360 / 3210 lm 32 W: 3374 / 3832 / 3623 lm 36 W: 3946 / 4201 / 4290 lm 40 W: 4222 / 4695 / 4514 lm	28 W: 3249 / 3521 / 3284 lm 32 W: 3647 / 4025 / 3696 lm 36 W: 3948 / 4400 / 3984 lm 40 W: 4269 / 4800 / 4280 lm	3000 / 3360 / 3210 lm	3249 / 3521 / 3284 lm
Efficacy	28 W: 109 / 124 / 115 lm/W 32 W: 108 / 127 / 112 lm/W 36 W: 109 / 123 / 118 lm/W 40 W: 108 / 126 / 117 lm/W	28 W: 113 / 128 / 112 lm/W 32 W: 109 / 126 / 107 lm/W 36 W: 106 / 124 / 104 lm/W 40 W: 103 / 122 / 100 lm/W	109 / 124 / 115 lm	113 / 128 / 112 lm/W
CCT	3000 / 4000 / 5000 K	3000 / 4000 / 5000 K	3000 / 4000 / 5000 K	3000 / 4000 / 5000 K
Dimensions	1195 x 295 x 33 mm	595 x 595 x 33 mm	1195 x 295 x 33 mm	595 x 595 x 33 mm
Weight	1.85 kg	1.65 kg	1.85 kg	1.65 kg
Product Colour	White	White	White	White

COMMON SPECIFICATIONS

Body Material	Steel
Diffuser Material	PMMA
IP Rating	IP40
CRI	> 80
SDCM	< 5
Driver	Remote
Flicker Free	Yes
Power Lead	1.2m Flex & Plug
Input Voltage	220-240Vac, 50/60Hz

Electrical Classification	Class II
Power Factor	> 0.9
Protection	Overload / Short Circuit
Projected Lifespan	> 54,000hrs @Ta25°C (L70)
Operating Ambient Temperature	-20 to 40°C
Smart	KASTA Compatible
Dimming	Non-Dimmable

APPLICATIONS

- Showrooms
- Offices
- Boardroom / Meeting Rooms
- Function Areas
- Retail Spaces
- Hotel Common Areas
- Storage Rooms
- Manufacturing Facilities
- Medical Facilities

ACCESSORIES

Mounting Supports



1273 x 304 x 70 mm
Surface Mount Panel
Frame to suit 0312 models
SMFP0312-OP-V4
(SAP 2002219)



673 x 606 x 70 mm
Surface Mount Panel
Frame to suit 0606 models
SMPF0606-OP-V4
(SAP 2002220)



330 x 1230 x 41 mm
Recessed Panel Frame
to suit 0312 models
PLRF0312-V2
(SAP 2002118)



630 x 630 x 41 mm
Recessed Panel Frame
to suit 0606 models
PLRF0606
(SAP 2000359)



1195 x 259 x 35 mm
Vented Recessed Panel
Frame to suit 0312 models
RF0412-AF
(SAP 2001091)

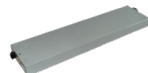


1196 x 596 x 10.5 mm
Vented Recessed Panel
Frame to suit 0312 models
RF0612-AF
(SAP 2000410)

Emergency Kits

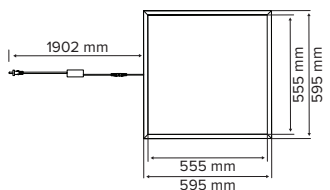


Panel Suspension Kit
for all models
SUSKIT-MATRIX
(SAP 2001880)

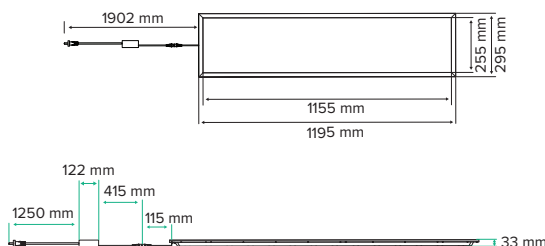


Emergency Kit to suit 36W
0606,0312 models
EMLED-2.4W-3H-60V 40PL
(SAP 2000590)

DIMENSIONS



MATX0606-EV / MATX0606-25-EV



MATX0312-EV / MATX0312-25-EV

Find out more



Provides the choice of light hues from a single luminaire

Tritone colour selectable

Increase productivity and lowers eyes strain

Flicker-free driver

True colour definition to highlight natural colour

High Colour Rendering Index (CRI)

Certified for education applications

Department of Education Compliant

Excellent lighting option for indoor work places

Low Unified Glare Rating (UGR)

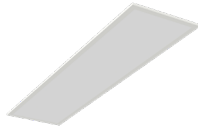
MATRIX^{LG} SENSOR

Low glare microprisms.

MATRIX LG (Low Glare) Sensor is a lighting solution that supports UGR<19 and provides excellent illumination levels and uniformity whilst reducing power consumption with the use of an occupancy sensor. This panel is perfect for classrooms and office spaces because of its precision micro prismatic diffuser, which reduces glare.



PRODUCT RANGE



Product Code	MTRX0312-25-LG-S
SAP Code	2002449
Power	25 W
Lumen Output	3449 / 3568 / 3473 lm
Efficacy	129 / 136 / 129 lm/W
CCT	4000 / 5000 / 6000 K
Dimensions	1195 x 295 x 34 mm
Product Colour	White

Sensor Type	Microwave & Daylight
Detection Angle	360°
Detection Radius	Ceiling Mounting @ 3 = 5m
Mounting Height	2.4 - 3.6 m
Hold Time	5 / 10 / 30 min
Daylight Threshold	10 / 30 / 50 Lux / Disable

COMMON SPECIFICATIONS

Body Material	Aluminium
Diffuser Material	Polycarbonate (Opal)
IP Rating	IP20
Beam Angle	90°
CRI	> 80
SDCM	< 5
Driver	Remote
Flicker Free	Yes
Input Voltage	220-240 V, 50/60 Hz

Electrical Classification	Class II
Power Factor	> 0.9
Protection	Overload / Short Circuit
Projected Lifespan	> 54,000hrs @Ta 25°C (L80)
Operating Ambient Temperature	-10 to 45°C
Smart	KASTA Compatible
Dimming	Non-Dimmable

APPLICATIONS

- Showrooms
- Offices
- Boardroom / Meeting Rooms
- Function Areas
- Education Facilities
- Storage Rooms
- Medical Facilities

ACCESSORIES

Mounting Supports



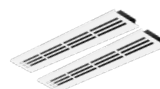
1273 x 304 x 70 mm
Surface Mount Panel Frame to suit 0312 models
SMPF0312-OP-V4
(SAP 2002219)



330 x 1230 x 41 mm
Recessed Panel Frame to suit 0312 models
PLRF0312-V2
(SAP 2002118)



1195 x 259 x 35 mm
Vented Recessed Panel Frame to suit 0312 models
RF0412-AF
(SAP 2001091)



1196 x 596 x 10.5 mm
Vented Recessed Panel Frame to suit 0312 models
RF0612-AF
(SAP 2000410)



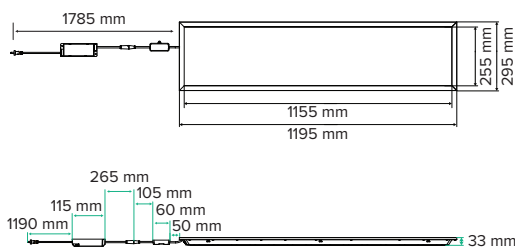
Panel Suspension Kit for all models
SUSKIT-MATRIX
(SAP 2001880)

Sensors and Control



Sensor Remote Controller
MTRX-SENSOR-REM
(SAP 2002450)

DIMENSIONS



MTRX0312-25-LG-S

Find out more



Minimises glare and enhancing visual comfort

Recessed diffuser

Provides the choice of light hues from a single luminaire

Tritone colour selectable

Excellent lighting option for indoor work places

Low Unified Glare Rating (UGR)

Provides high end appearance

Modernised design

Enhances the premium look and feel

Painted aluminium housing

PANNELLO

Streamlined solution, competitive value.

PANNELLO is an LED troffer that offers three different colour temperatures and four different power options. It uses flicker-free technology and has a low-glare fitting with a UGR<19. This LED panel comes with a white powder-coated aluminium frame and is designed to be used in T-bar grid suspension ceilings.



PRODUCT RANGE



Product Code	PANNELLO-LV	PANNELLO-LV-AR
SAP Code	2001975	2001976
Power	26 / 32 / 36 / 40 W	26 / 32 / 36 / 40 W
Lumen Output	26 W: 2760 / 2910 / 2870 lm 32 W: 3330 / 3560 / 3696 lm 36 W: 3630 / 3900 / 3810 lm 40 W: 3820 / 4090 / 3950 lm	26 W: 2760 / 2910 / 2870 lm 32 W: 3330 / 3560 / 3696 lm 36 W: 3630 / 3900 / 3810 lm 40 W: 3820 / 4090 / 3950 lm
Efficacy	26 W: 106 / 112 / 111 lm/W 32 W: 104 / 111 / 108 lm/W 36 W: 101 / 108 / 106 lm/W 40 W: 92 / 102 / 99 lm/W	26 W: 106 / 112 / 111 lm/W 32 W: 104 / 111 / 108 lm/W 36 W: 101 / 108 / 106 lm/W 40 W: 92 / 102 / 99 lm/W
CCT	3000 / 4000 / 5000 K	3000 / 4000 / 5000 K
Beam Angle	75°	75°
Dimensions	295 x 1195 x 48 mm	295 x 1195 x 48 mm
Product Colour	White	White

COMMON SPECIFICATIONS

Body Material	Steel	Electrical Classification	Class II
Diffuser Material	Polycarbonate	Power Factor	> 0.9
IP Rating	IP40	Protection	Overload / Short Circuit
CRI	> 80	Projected Lifespan	50,000hrs @Ta25°C (L70)
SDCM	< 3	Operating Ambient Temperature	-20 to 45°C
Driver	Remote	Smart	KASTA Compatible
Flicker Free	Yes	Dimming	Non-Dimmable Phase Cut, DALI, 0/1-10V, and DSI dimming available
Power Lead	1.2m Flex & Plug		
Input Voltage	220-240Vac, 50/60Hz		

APPLICATIONS

- Showrooms
- Offices
- Boardroom / Meeting Rooms
- Function Areas
- Retail Spaces
- Hotel Common Areas
- Storage Rooms
- Manufacturing Facilities
- Medical Facilities

ACCESSORIES

Mounting Supports



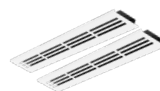
1273 x 304 x 70 mm
Surface Mount Panel
Frame to suit 0312 models
SMPF0312-OP-V4
(SAP 2002219)



330 x 1230 x 41 mm
Recessed Panel Frame
to suit 0312 models
PLRF0312-V2
(SAP 2002118)



1195 x 259 x 35 mm
Vented Recessed Panel
Frame to suit 0312 models
RF0412-AF
(SAP 2001091)

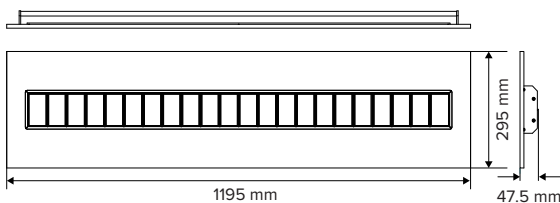


1196 x 596 x 10.5 mm
Vented Recessed Panel
Frame to suit 0312 models
RF0612-AF
(SAP 2000410)

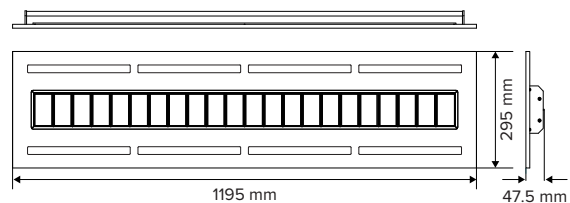


Panel Suspension Kit
for all models
SUSKIT-MATRIX
(SAP 2001880)

DIMENSIONS

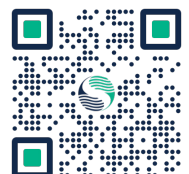


PANNELLO-LV



PANNELLO-LV-AR

Find out more



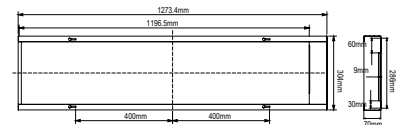
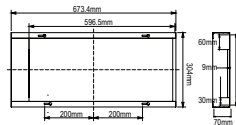
Accessories

MOUNTING SUPPORTS



Product Code	SMPF0306-OP-V4	SMPF0312-OP-V4
SAP Code	2002218	2002219
Type	Surface Mount Frame	Surface Mount Frame

Dimension



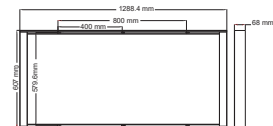
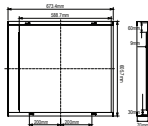
Compatible With

MATX0306-20-G4

MATX0312-EV
MATX0312-25-EV
MATX0312-PS-G4
MTRX0312-25-LG-S
PANNELLO-LV
PANNELLO-LV-AR

Product Code	SMPF0606-OP-V4	SMPF0612-OP-V3
SAP Code	2002220	2002123
Type	Surface Mount Frame	Surface Mount Frame

Dimension



Compatible With

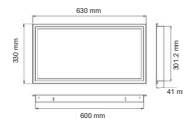
MATX0606-EV
MATX0606-25-EV
MATX0606-PS-G4

MATX0612-48-G4



Product Code	PLRF0306	PLRF0312-V2
SAP Code	2000357	2002118
Type	Recessed Frame	Recessed Frame

Dimension



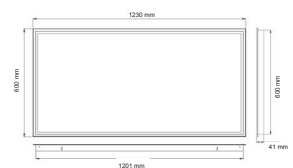
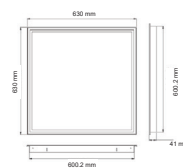
Compatible With

MATX0306-20-G4

MATX0312-EV
MATX0312-25-EV
MATX0312-PS-G4
MTRX0312-25-LG-S
PANNELLO-LV
PANNELLO-LV-AR

Product Code	PLRF0606	PLRF0612
SAP Code	2000359	2000360
Type	Recessed Frame	Recessed Frame

Dimension



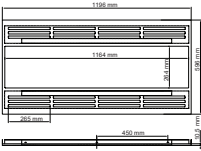
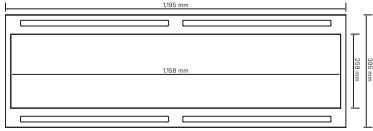
Compatible With

MATX0606-EV
MATX0606-25-EV
MATX0606-PS-G4

MATX0612-48-G4

MOUNTING SUPPORTS

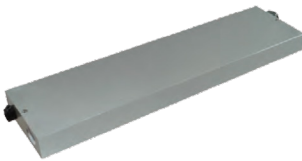


Product Code	RF0612-AF	RF0412-AF
SAP Code	2000410	2001091
Type	Vented Recessed Frame	Vented Recessed Frame
Dimension		
Compatible With	MATX0312-EV MATX0312-25-EV MATX0312-PS-G4 MTRX0312-25-LG-S PANNELLO-LV PANNELLO-LV-AR	MATX0312-EV MATX0312-25-EV MATX0312-PS-G4 MTRX0312-25-LG-S PANNELLO-LV PANNELLO-LV-AR



Product Code	SUSKIT-MATRIX
SAP Code	2001880
Type	Suspension Kit
Compatible With	MATRIX ^{G4} (all models) MATRIX ^{LG SENSOR} (all models) MATRIX ^{EVO} (all models) PANNELLO (all models)

EMERGENCY KITS



Product Code	EMLED-2.4W-3H-60V 40PL
SAP Code	2000590
Type	Emergency Kit
Compatible With	MATX0312-PS-G4 MATX0606-PS-G4 MATX0612-48-G4 MATX0312-EV MATX0606-EV PANNELLO-LV PANNELLO-LV-AR

SENSORS AND CONTROL



Product Code	MTRX-SENSOR-REM
SAP Code	2002450
Type	Sensor Remote Controller
Compatible With	MATRIX ^{LG SENSOR} (all models)