

MATRIX LED PANEL





**LIGHTING
SOLUTIONS
FOR
COMMERCIAL
AND
EDUCATION**

MATRIX

A neutral white, thin evenly lit LED panel.



The **MATRIX** is a reliable, back-lit LED panel designed to be a high performance, energy efficient and low glare design ideally for general illumination in commercial applications such as offices and schools.

BENEFITS

- IPART & VEET approved for energy saving scheme rebates in NSW & VIC
- Flicker free technology
- UGR 19 (Unified Glare Rating) compliant to AS/NZS 1690.1
- Australian Department of Education & Training compliant
- EN12464 compliant
- DALI, 1-10V dimming option available
- 5 years warranty
- Surface mount and suspension kits are available as accessories

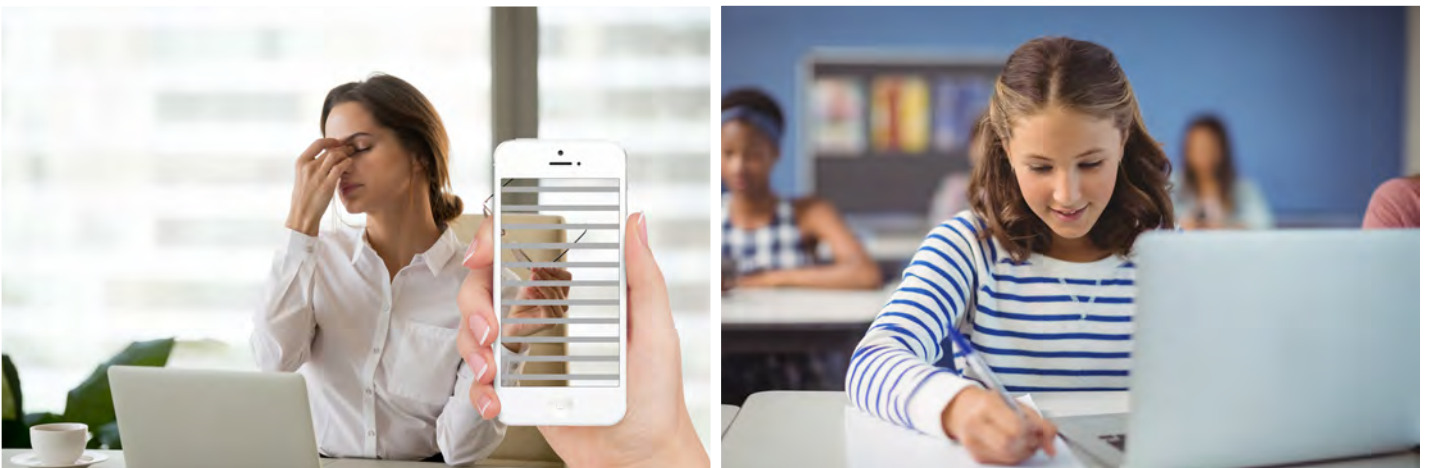
FEATURES

- Available in 4000K or 5000K
- Low glare design
- Sturdy powder coated steel housing
- Excellent light distribution
- Complete with remote control gear
- Optional dimmable driver
- Complete with flex and plug for simple installation

- 1.** Utilizing back-lit technology the MATRIX panel avoids yellowing issues and has superior heat dissipation which means less chance of a buckling of the frame over time.



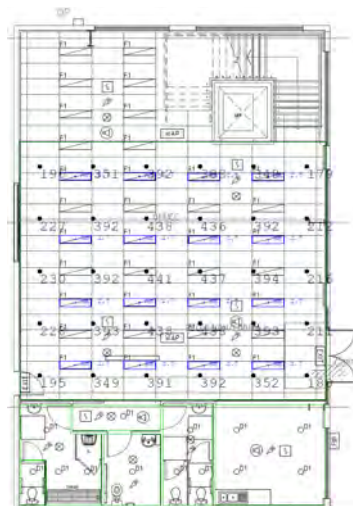
- 2.** Flicker free technology and low glare provide comfortable light for tasks which can improve productivity



- 3.** Light uniformity - MATRIX 28 watt exceeds the DET Requirements (Department of Education & Training) UGR 19 (Unified Glare Rating) compliant to AS/NZS 1690.1



Office layout sample #1 :
utilizing 36 watt panel (1200 x 300)
maintained $A_v = 387$ lux,
 $M_f = 0.8$, Uniformity = 0.54



Office layout sample #2 :
utilizing 28 watt panel (1200 x 300)
maintained $A_v = 324$ lux,
 $M_f = 0.8$, Uniformity = 0.54

PERFORMANCE CRITERIA	MINIMUM REQUIREMENTS
Luminaire Warranty	5 Years on LED Modules / Chips and Ballast / Driver
LED Lamp and Electronic Control Gear Life	50,000hrs
LED Maintenance Depreciation classification	L70B50
Efficacy	95 Lumens/Watt
LED Colour Rendering Index (CRI)	80+
LED Colour Temperature	4000K (Neutral White)
Macadams rating (SDCM)	1-4
Luminaire Diffuser	Prismatic (preferred), Opal / Reeded Acrylic are accepted
Electronic Control Gear	Constant Current Control Gear Minimum 85% efficiency at Full Load
Electronic Control Gear Power Factor	0.88 or better
Maximum Electronic Control Gear Earth Leakage Current	<0.5mA
Independent Luminaire Test Data (Photometrics)	'IES' / 'LDT' Files Available



MATRIX Part Number Table

595mm x 595mm

POWER	LUMEN	lm/W	CCT	WEIGHT	SAP CODE	PRODUCT CODE
28W	3040lm	109lm/W	4000K	1.85kg	2001842	MATRIX28W0606-4K
	2980lm	106lm/W	5000K		2001843	MATRIX28W0606-5K
36W	3880lm	108lm/W	4000K	1.85kg	2000343	MATRIX36W0606-4K
	3810lm	106lm/W	5000K		2000344	MATRIX36W0606-5K

295mm x 1195mm

POWER	LUMEN	lm/W	CCT	WEIGHT	SAP CODE	PRODUCT CODE
28W	3230lm	115lm/W	4000K	1.85kg	2001862	MATRIX28W0312-4K
	3100lm	111lm/W	5000K		2001863	MATRIX28W0312-5K
36W	4120lm	114lm/W	4000K	1.85kg	2000341	MATRIX36W0312-4K
	3950lm	110lm/W	5000K		2000342	MATRIX36W0312-5K

595mm x 1195mm

POWER	LUMEN	lm/W	CCT	WEIGHT	SAP CODE	PRODUCT CODE
48W	5870lm	122lm/W	4000K	3.40kg	2001851	MATRIX48W0612-4K
	5800lm	121lm/W	5000K		2001852	MATRIX48W0612-5K



SALES OFFICE & WAREHOUSE

South Australia (Headoffice)

262 Marion Road
Netley, SA 5037
Ph: (08) 8297 6373
Fax: (08) 8297 6769

Queensland

72 Crockford St
Northgate, QLD 4013
Ph: 07 3123 5008
Fax: 07 3319 6170

Victoria & Tasmania

Unit 2, 245 Browns Road
Noble Park North, VIC 3174
Ph: 03 9008 6109
Fax: 03 8524 3095

New South Wales & ACT

Unit 3, 40 Brodie Street
Rydalmere, NSW 2116
Ph: 02 8999 1377

Western Australia

4/8 Tomlinson Road
Welshpool, WA 6106
Ph: 08 9436 6666
* Pick up only

GENERAL ENQUIRIES

info@haneco.com.au
Ph: (08) 8297 6373

1300 001 LED (533)

www.haneco.com.au

#hanecolighting
@hanecolighting

Australia's LED Lighting Specialist